

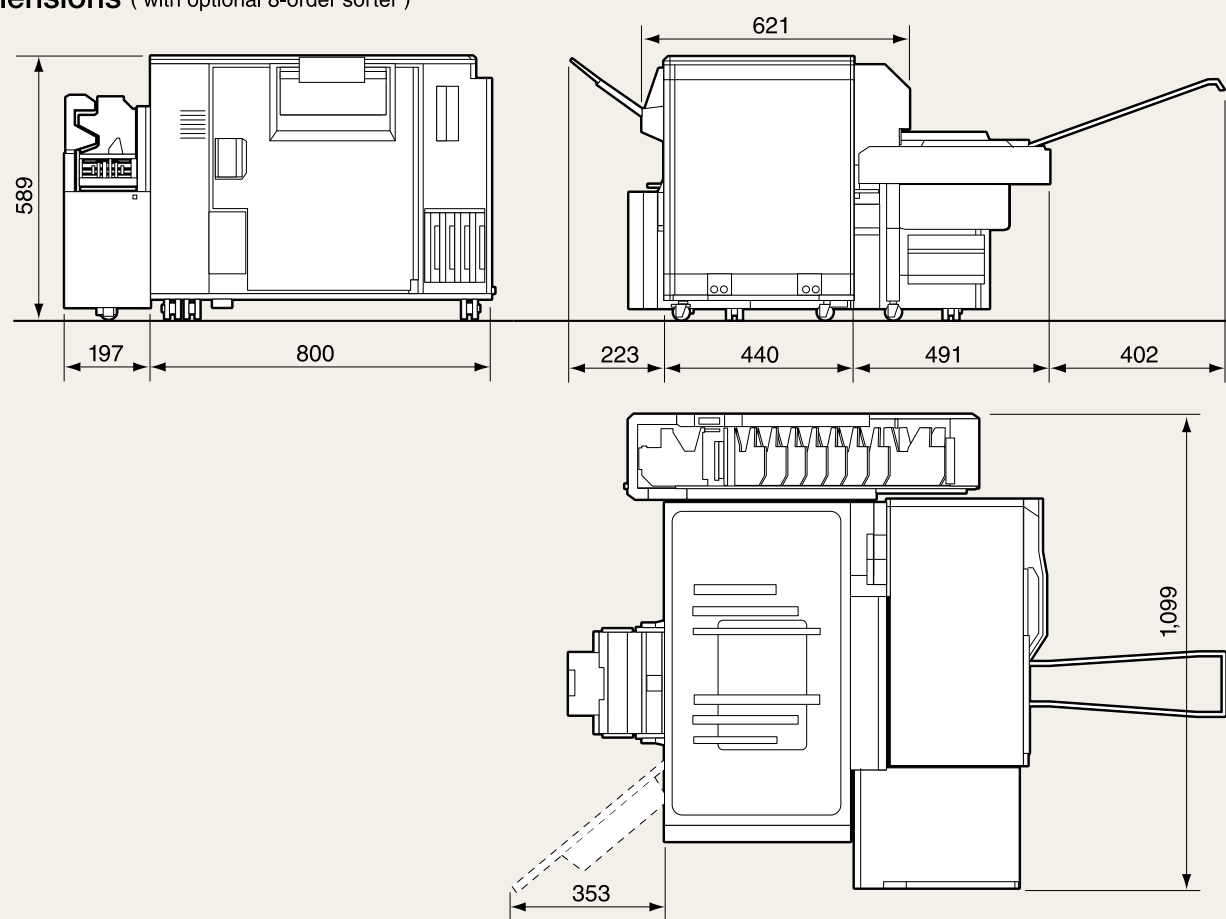
Frontier Dry Minilab DL410 Main Specifications

Model name	DL410	
Print method	Piezoelectric inkjet system	
Print capacity	Approx. 650 prints / hr (4R 152mm) Approx. 250 prints / hr (203 x 254mm)	
Processing time (dry to dry)	Approx. 47 seconds (fastest time)	
Print resolution	720 x 720dpi	
Paper	Roll paper	4"(102mm x 100m), 5"(127mm x 100m), 6"(152mm x 100m), 8"(203mm x 100m), 10"(254mm x 100m)
	Sheet paper	A4(210mm x 307mm), 8"x10"(203mm x 264mm)
Paper type	Glossy / Luster	
Ink cartridges	4 colors (Y, M, C, BK) of dye base ink (Volume: 500ml per color)	
Back printing (optional)	Image information is printed on the back of the print — 1 line(40 characters) or 2 lines (80 characters) (selectable)	
Printer sorter (optional)	7-order sorter or 8-order sorter(selectable)	
Floor space	Approx. 0.5 m ² (RIP-PC and other options not included)*	
Total installation space	Approx. 2.4 m ² (RIP-PC and other options not included)	
Power requirements	100-120V / 200-240V (50 / 60Hz) manual conversion single-phase two-wire	
Dimensions (mm)	L800 x W621 x H589 (RIP-PC and other options not included)	
Weight	Weight per unit: 96 kg (RIP-PC, paper, inkjet cartridges options not included)	
Power consumption	51.0Kwh per month (in energy saving mode) 82.7Kwh per month (without energy saving mode)	

*Floor Contact Footprint Approx. 0.35m²

Dimensions (with optional 8-order sorter)

Unit: mm



Note: Specifications are subject to change without notice due to improvements.

FUJIFILM

Expanding
FRONTIER
Solutions

Frontier Quality Now Available in a Compact Body

DRY MINILAB

Inkjet system

Frontier DL410

NEW



FUJIFILM

FUJIFILM Corporation

7-3, AKASAKA 9-CHOME, MINATO-KU, TOKYO 107-0052, JAPAN

Frontier Quality Now Available in a Compact Body

Introducing the New Dry Minilab with High Functionality, High Quality and Easy Operation

With a footprint of just 0.5 m², the DL410 comes in a compact body — you can even place it on a countertop. Highly functional output of 650 sheets per hour (4R), and the high image quality that you have come to expect from Frontier.

Easy operation with “MS” software, and easy maintenance inkjet system. Allows you to offer high quality print services in a variety of locations.

Introducing the Frontier Dry Minilab DL410 — pioneering a new future for the photographic business.

Frontier
Dry Minilab
DL410

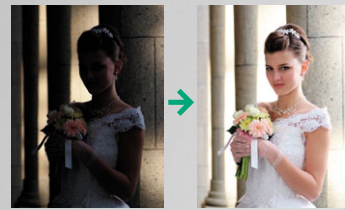
High Quality

Frontier Quality with our Proprietary Technology

Equipped with Fujifilm's proprietary Image Intelligence™ image processing technology, we are able to achieve high-level Frontier quality. By using together with FUJIFILM Quality Dry Photo Paper, you will be able to offer high Frontier image quality prints.

Image Intelligence™

Incorporated Image Intelligence™ automatically compensates for problematic conditions, such as poor lighting, backlighting, high contrast, underexposure or overexposure. Image Intelligence™ also makes skin tones more natural and facial expressions more distinct. Processing time is reduced because photo image correction is automatic at the same time ensuring attractive, customer-pleasing prints.



Original image → Optimized image after image processing

FUJIFILM Quality Dry Photo Paper

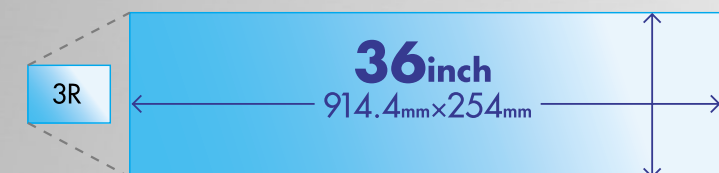
FUJIFILM Quality Dry Photo Paper — inkjet paper produced exclusively for use with the DL410 — achieves a wide range of vivid colors, high black density and purer whiteness. In addition, the excellent image clarity of the paper enables you to achieve the highest quality prints with outstanding glossiness and sharpness.



High Performance

650 sheets per hour (4R) and a high output of other paper sizes

High speed print function now with 5 types of roll paper and 2 types of sheet paper. Further enhanced to handle a wide range of print sizes — from 3R size (127x89mm) up to 10x36 inch (254x914.4mm).



7-order Sorter (optional)

All above functions plus 8x10 inch (203x254mm) prints with this optional sorter.



Compact

Compact size with a footprint of just 0.5 m²

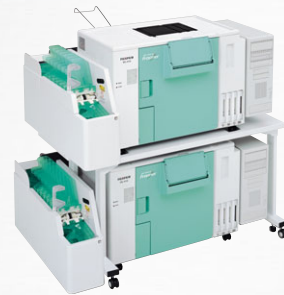
Its compact size allows it to be placed on a countertop and increases your location options. Available with optional double stack type cabinet, further enhancing space-saving capacity.



Compact footprint
0.5 m²

Double Stack Type Cabinet (optional)

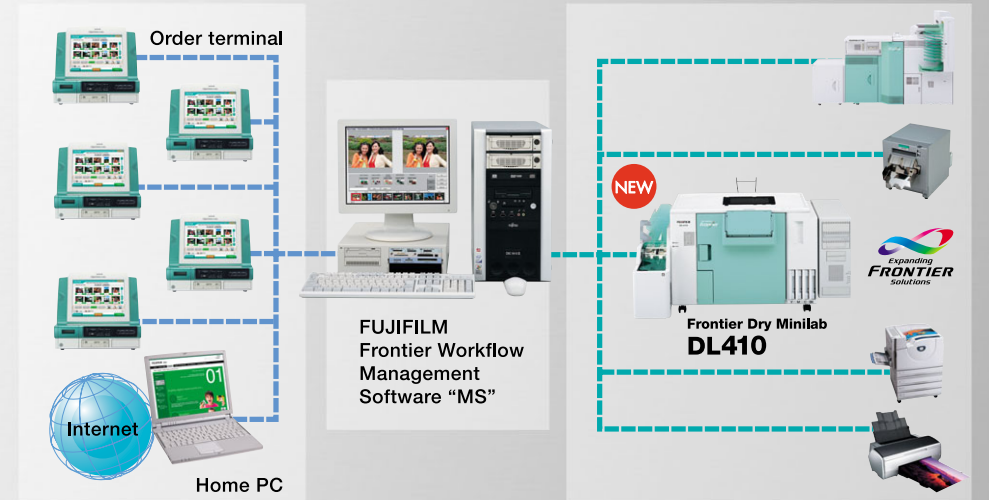
The DL410 double stack design enables increased workload using exactly the same floor space.



Scalability

Outstanding Scalability for Expanded Print Business

The DL410 is part of the new lineup of Expanding Frontier Solutions products. With outstanding scalability and connectivity to in-store ordering terminals and the Internet, the DL410 is able to accept a wide range of orders for high Frontier quality prints.



*Limited combinations and number of units

Easy Operation

Easy Operation with “MS” Software

Equipped with “MS” software for standardized operability. Enables the easy operation you have come to expect with Frontier RIP-PC and DL410 offer a wide range of connectivity for collective processing.

Collective order management

Installation of FUJIFILM Frontier Workflow Management Software “MS” dramatically integrates the workflow management of printing orders and output commands from a wide range of input devices. It affords complete control over in-shop workflow, which can sometimes become surprisingly complex, along with easy preview operation, reduced errors and quick processing.



Preview operation

Easy Maintenance

Easy maintenance — just change the ink and supply extra paper when required

With the dry system, the only maintenance you have to do is change the ink cartridges. Easy operations even in brightly-lit rooms. Sheet and roll paper is easily changeable.



Wide range of easily changeable roll paper sizes

Handy sheet paper tray

Easily changeable ink cartridges