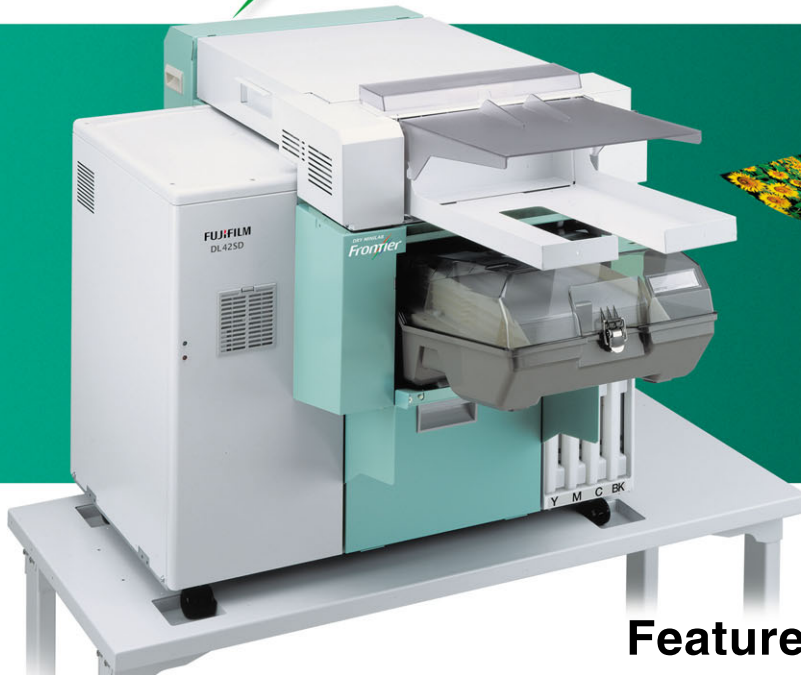


Introducing the exclusive sheet paper-type, automatic double-sided print, compact dry minilab with high quality value-added prints

DRY MINILAB
Frontier DL42SD

Inkjet system

reference exhibit



Suitable for Photobook!

Features

Exclusive sheet paper-type with automatic double-sided printing

Optional automatic double-sided printing facility available. Perfect for value-added print services such as Photobook and Folded Photo Greeting Card.



High Quality

Equipped with "Image Intelligence™" image processing technology, we are able to achieve high-level Frontier quality. Exclusive ink cartridge combined with exclusive paper for high quality images.



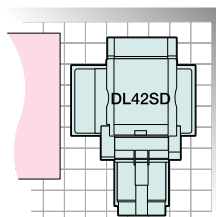
Easy Operation

Equipped with standardized "MS" workflow software for easy operation.



Convenient single-sided operation

Front paper loading and output design enable convenient single-sided operation and location (can be easily used in enclosed spaces).



High Performance

Able to process approx. 220 sheets of A4-size paper per hour (single-sided printing). Able to load approx. 200 sheets into paper magazine.



Easy Maintenance

Inkjet system enables easy maintenance — just change the cartridge and supply paper when required.



FUJIFILM Frontier Workflow Management Software “MS”

With its host of features and functions to increase efficiency and convenience, FUJIFILM Frontier Workflow Management Software “MS” boosts the productivity of your printing services and ensures beautiful, high-quality photo prints.

Collective order management

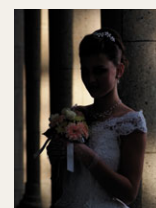
Installation of FUJIFILM Frontier Workflow Management Software “MS” dramatically integrates the workflow management of printing orders and output commands from a wide range of input devices. It affords complete control over in-shop workflow, which can sometimes become surprisingly complex, along with easy preview operation, reduced errors and quick processing.



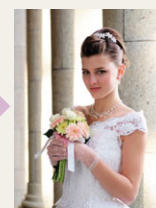
Preview operation

Image Intelligence™

FUJIFILM Frontier Workflow Management Software “MS” employs Fujifilm’s proprietary Image Intelligence™ technology to offer an expandable range of image correction features, including gradation adjustment, sharpness enhancement and other image processing functions for digital camera prints. This sophisticated image processing technology makes it easy to provide high-quality print services to satisfy the most demanding customers.



Original image



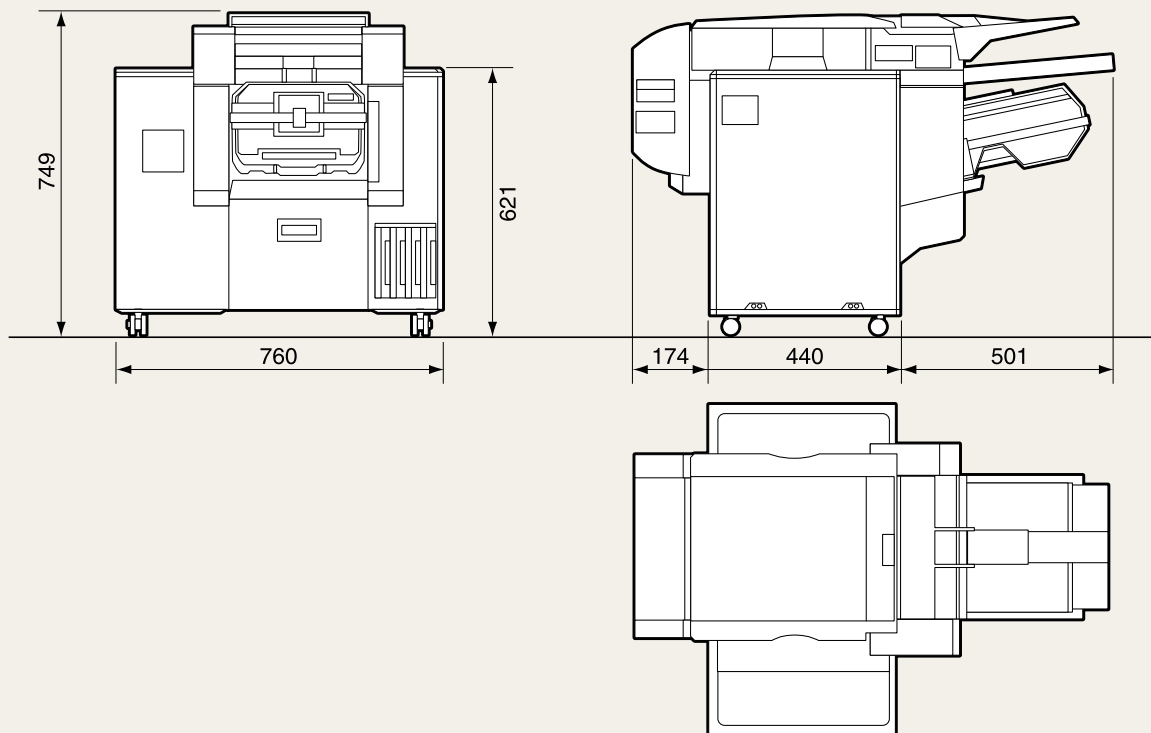
Optimized image after image processing

Frontier Dry Minilab DL42SD Main Specifications

Model name	DL42SD
Printed Method	Piezoelectric inkjet system
Print capacity	Approx. 220 prints/hr (A4-size sheet paper, single-sided printing) Approx. 78 prints/hr (A4-size sheet paper, double-sided printing)
Print resolution	720x720dpi
Paper (Sheet Paper)	Paper widths: 100 – 254 mm Paper lengths: 148 – 381mm
Paper type	Single-sided printing: Glossy / Luster / Matte Double-sided printing: Luster / Matte
Ink cartridges	4 colors (Y,M,C,BK) of dye base ink (Volume: 500ml per color)
Floor space	Approx. 0.8m ² *Floor contact footprint: Approx. 0.34m ²
Total installation space	Approx. 1.5m ²
Power requirements	100-120V / 200-240V (50/60Hz) automatic conversion single-phase two-wire
Dimensions (mm)	Standard dimensions: L760 x W1056 x H722mm
Weight	Weight per unit: 102.8kg (reverse unit, paper, inkjet cartridges options not included)
Reverse Unit (Optional)	Automatic double-sided printing unit

Dimensions (with optional reverse unit)

Unit: mm



Note: Specifications are subject to change without notice due to improvements.

FUJIFILM

FUJIFILM Corporation

7-3, AKASAKA 9-CHOME, MINATO-KU, TOKYO 107-0052, JAPAN