



QuickGene Series Application Guide

Genomic DNA Isolation from Yeast

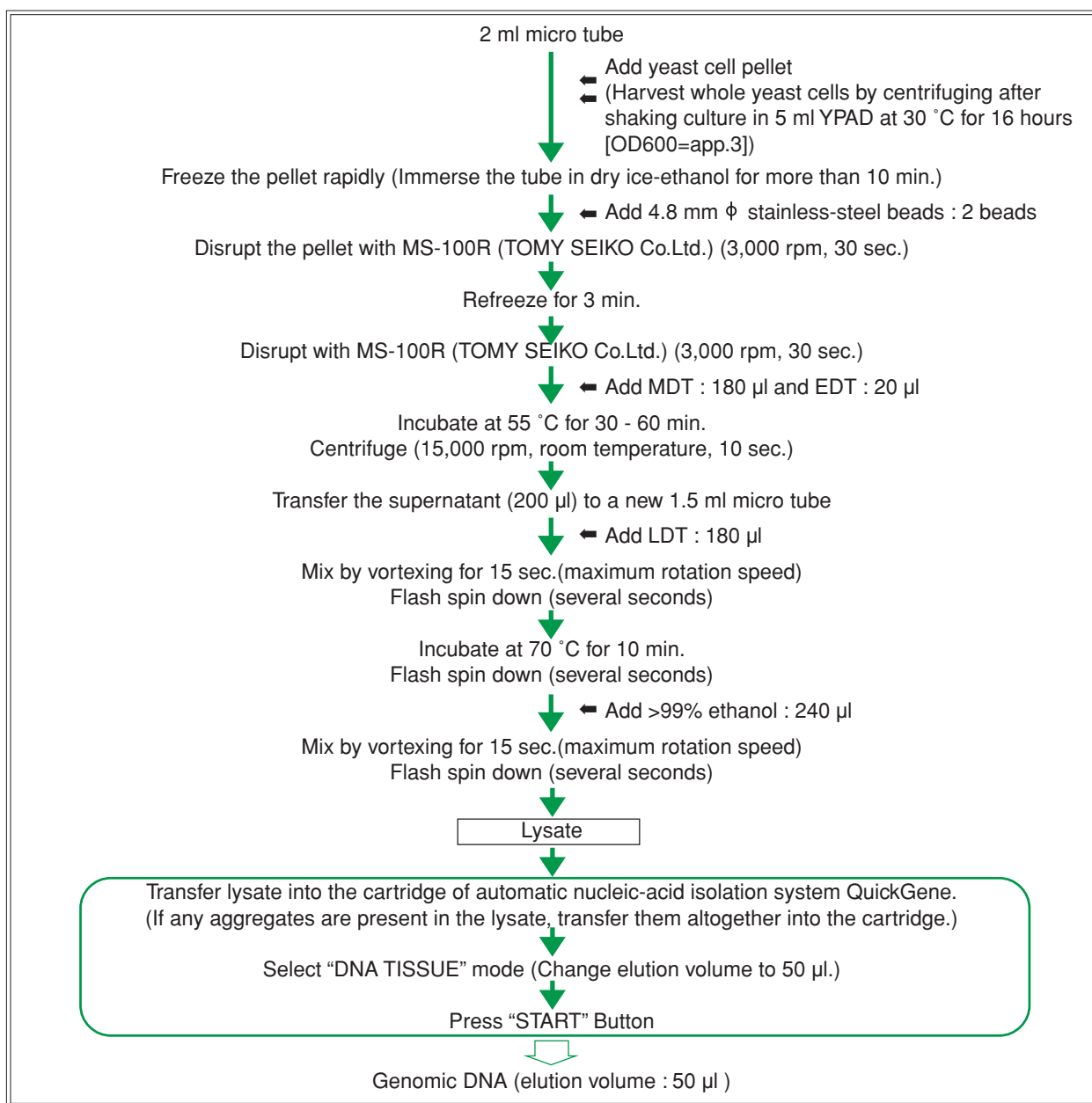
Kit : QuickGene DNA tissue kit S

Model : QuickGene-810

Summary

Enables easy and rapid high-yield isolation of DNA from yeast (methylotrophic yeast *Ogataea minuta*)

Protocol



* Perform isolation within 30 min. after lysate preparation.

Results : Isolation of genomic DNA from yeast

Genomic DNA was isolated from methylotrophic yeast *Ogataea minuta* using QuickGene system (QuickGene-810 and QuickGene DNA tissue kit S).

Kind of yeast : methylotrophic yeast *Ogataea minuta*
 Initial sample amount : 5 ml YPAD

↓

Shake culture at 30 °C for 16 hours (OD600=app.3)

↓

Harvest whole yeast cells by centrifuging

↓

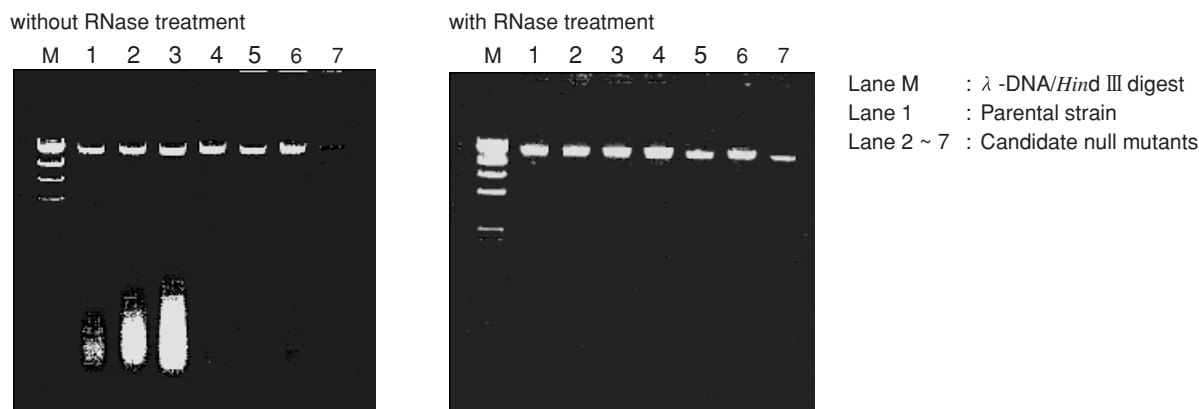
genomic DNA (elution volume : 50 µl)

RNase treatment : genomic DNA : 1 µl
 RNase (10 mg/ml) : 0.1 µl (final conc. 100 ng/ µl)
 up to 10 µl with s.d.w.

↓

37 °C, 15 min.

1) Agarose Gel Electrophoresis of isolated genomic DNA



2) The yield and purity of genomic DNA (without RNase treatment)

	Yield (µg)	Purity (A _{260/280})
1	79.4	2.12
2	111.1	2.13
3	127.8	2.12
4	35.0	2.01
5	30.2	1.85
6	53.3	1.99
7	10.7	1.67

The use of QuickGene system enables the high-yield isolation of high-purity genomic DNA from yeast.

(Contributed by Glycobiology Team, Research Center for Glycoscience, National Institute of Advanced Industrial Science and Technology)

* Trade mark and exclusion item

Right to registered names etc used in this Application Guide is protected by law especially even in the case of no denotation.



<http://lifescience.fujifilm.com>

Fuji Photo Film Co., Ltd. Life Science Products Division

26-30, Nishiazabu 2-Chome, Minato-ku, Tokyo 106-8620, Japan, Tel : +81-3-3406-2201, Fax : +81-3-3406-2158 • E-mail : sginfo@fujifilm.co.jp

Fujifilm Medical Systems U.S.A., Inc.

419 West Avenue, Stamford, CT 06902, U.S.A. Tel : +1-203-324-2000 ext. 6112 (1-800-431-1850 ext. 6112 in the U.S.) Fax : +1-203-351-4713 • E-mail : SSG@fujimed.com

<http://www.fujifilm.de/lifescience/>

Fuji Photo Film (Europe) GmbH.

Heesenstr.31, 40549 Dusseldorf, Germany, Tel:+49-211-5089-174,Fax:+49-211-5089-139 • E-mail:lifescience@fujifilmurope.de