



QuickGene

QuickGene Series

Application Guide

Human Papiloma Virus (HPV) DNA Extraction from Human Cervical Carcinoma Cell lines

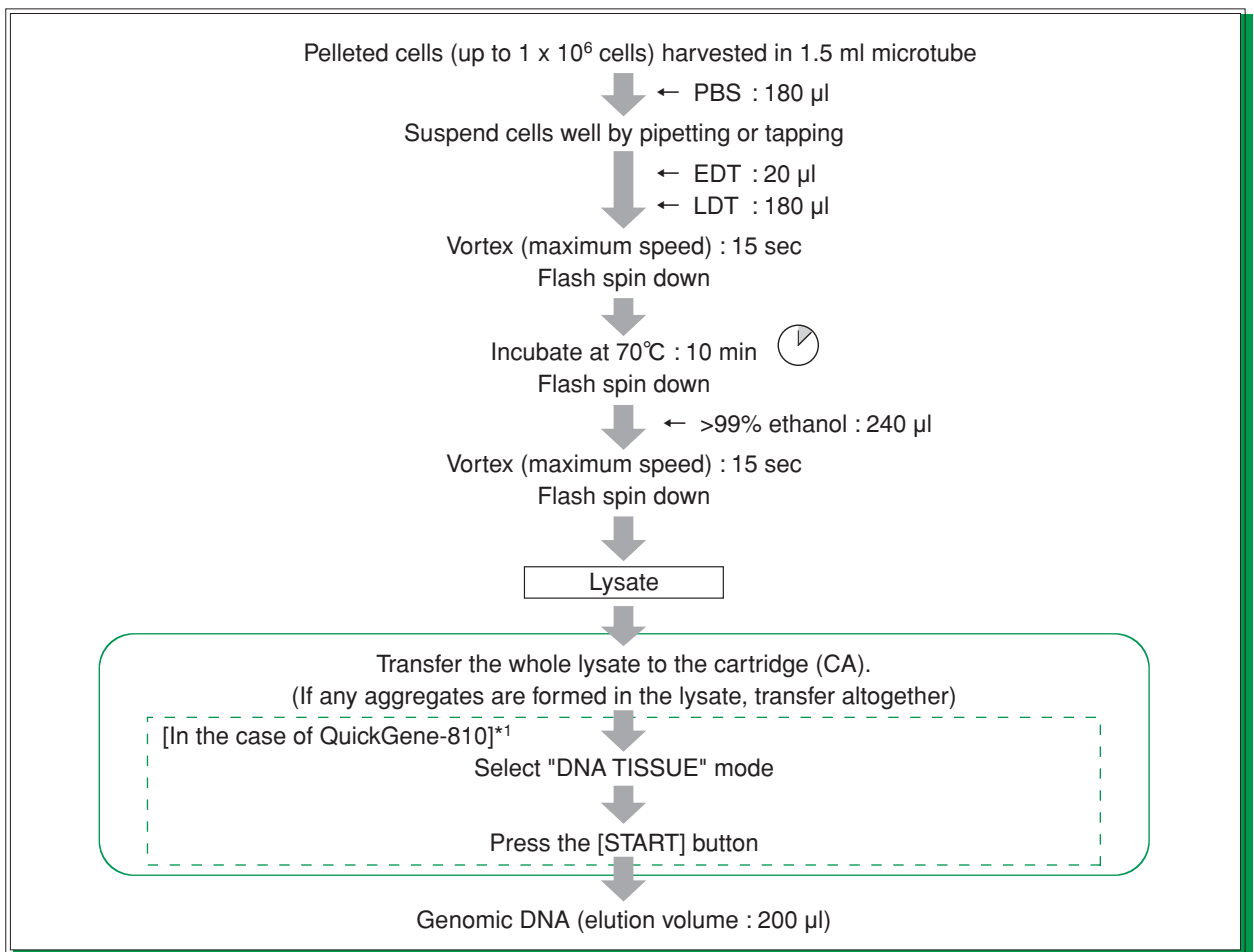
Kit : QuickGene DNA tissue kit S

Model : QuickGene-810 / QuickGene-Mini80

Summary

Enables easy and rapid extraction of human papiloma virus (HPV) DNA from human cervical carcinoma cell lines.

● Protocol



*1 : In the case of QuickGene-Mini80, please refer to the Kit Handbook for details.

* Perform extraction within 30 min after lysate preparation.

Results : Human papiloma virus (HPV) DNA extraction from human cervical carcinoma cell lines.

Human papiloma virus (HPV) DNA was extracted from human cervical carcinoma cell lines using QuickGene system (QuickGene and QuickGene DNA tissue kit S) and Spin column method (A company).

Cell strain : HeLa (containing 10~50 copies of HPV18)
 : SiHa (containing 1~2 copies of HPV16)
 : CasKi (containing 400~600 copies of HPV16)

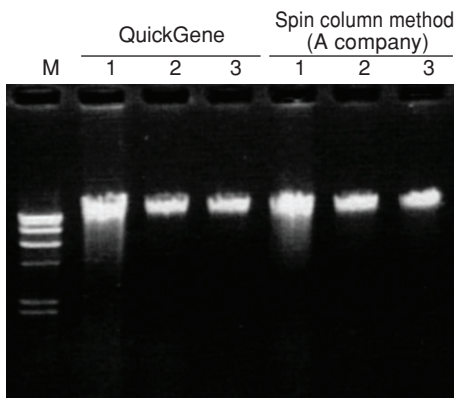
● The yield and purity of genomic DNA

sample	Yield			Purity (A260/280)		
	HeLa	SiHa	CasKi	HeLa	SiHa	CasKi
QuickGene	23.5 µg	11.6 µg	13.5 µg	2.00	1.94	1.93
Spin column method (A company)	26.2 µg	10.5 µg	7.3 µg	1.81	1.94	2.15

The use of QuickGene system enables extraction of high-purity genomic DNA with little contamination of protein in good reproducibility.

● Electrophoresis of genomic DNA

Electrophoresis was performed with genomic DNA extracted from human cervical carcinoma cell lines using QuickGene system and Spin column method (A company).



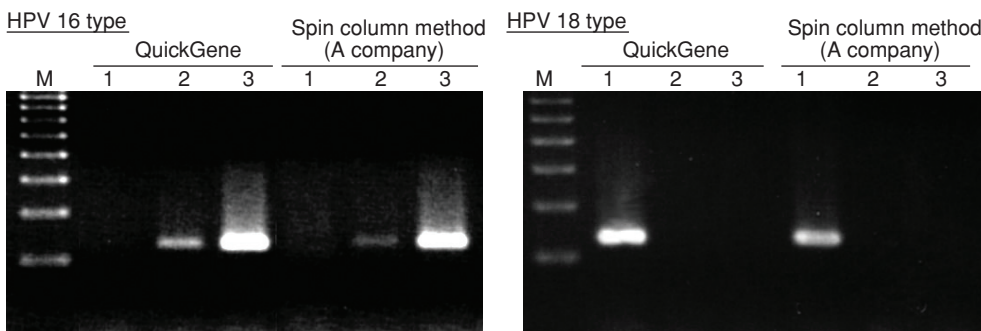
Electrophoresis condition : 1.5% agarose / 1 x TAE

M : λ -Hind III
 1 : HeLa
 2 : SiHa
 3 : CasKi

No decomposition was detected for extracted genomic DNA.

● PCR

Viral genomic DNA of HPV 16 type and HPV 18 type was detected by PCR for genomic DNA extracted using QuickGene system and Spin column method (A company).



Electrophoresis condition : 2% agarose / 1 x TAE

M : 100 bp DNA Ladder
 1 : HeLa
 2 : SiHa
 3 : CasKi

1 to 2 copies of HPV genomic DNA were detected per cell by PCR for HPV DNA extracted using QuickGene system.

* Trademark and exclusion item

Right to registered names etc. used in this Application Guide is protected by law especially even in the case of no denotation.

FUJIFILM

FUJIFILM Corporation 7-3, Akasaka 9-Chome, Minato-ku, Tokyo 107-0052, Japan, Tel : +81-3-6271-2158, Fax : +81-3-6271-3136 • E-mail : sginfo@fujifilm.co.jp

FUJIFILM Europe GmbH Heesenstr.31, 40549 Dusseldorf, Germany, Tel:+49-211-5089-174, Fax:+49-211-5089-9144 • E-mail:lifescience@fujifilm europe.de

FUJIFILM UK Ltd. Unit 12 St Martins Way, St Martins Business Centre, Bedford, MK42 0LF, U.K., Tel:+44-1234-245291, Fax:+44-1234-245293 • E-mail:lifesciences@fujifilm.co.uk

富士胶片(中国)投资有限公司 31st floor, Hong Kong New World Tower, No.300 Huai Hai Zhong Road, Shanghai, P.R China, Tel:+86-21-3302-4655 ext.363, Fax:+86-21-6384-3322 • E-mail:wgxian@fujifilm.com.cn

FUJIFILM Medical Systems U.S.A., Inc. Tel:+1-866-902-3854 Fax:+1-203-327-6485 • E-mail:don.wilke@fujimed.com

<http://lifescience.fujifilm.com/>