

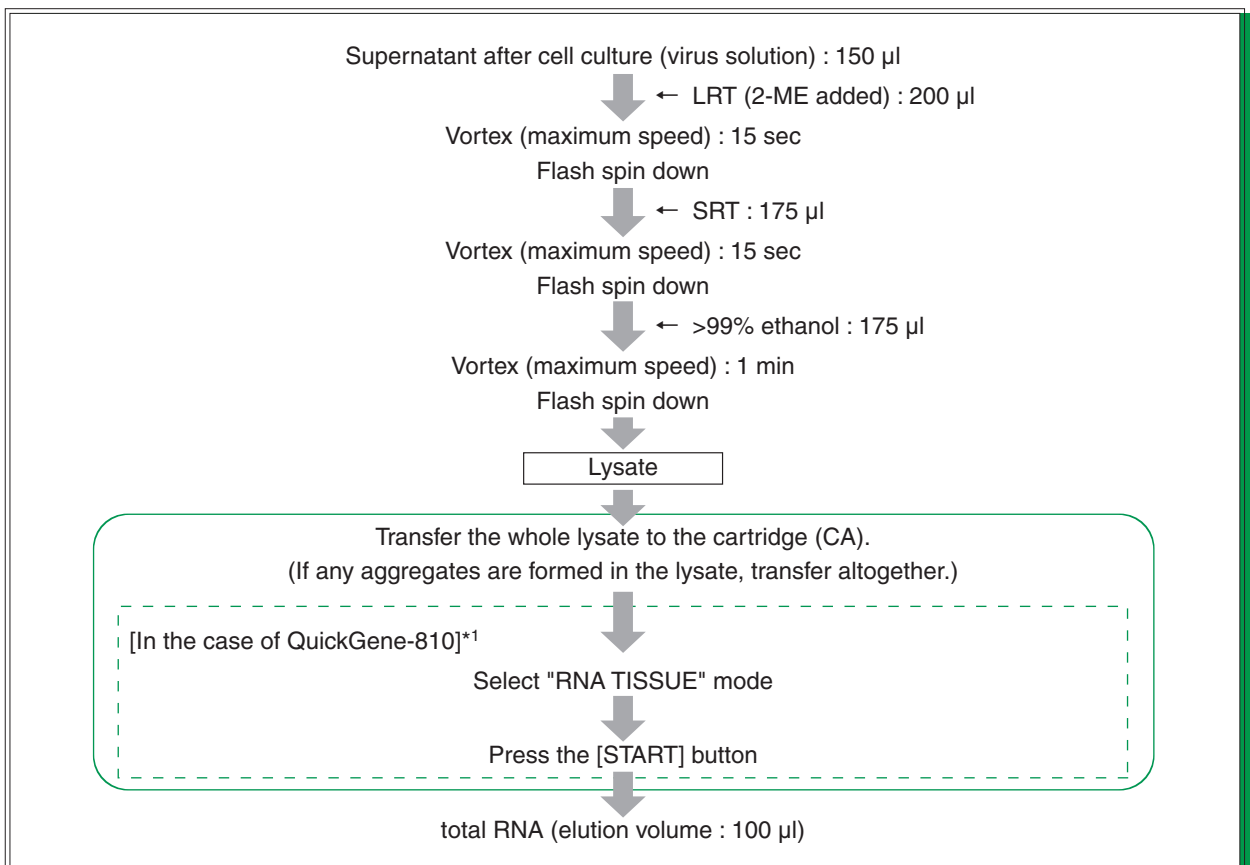
QuickGene Series **Application Guide****total RNA Extraction from Respiratory Syncytial (RS) Virus Solution**

Kit : QuickGene RNA tissue kit S II

Model : QuickGene-810 / QuickGene-Mini80

Summary

Enables easy and rapid total RNA extraction from RS virus solution

● Protocol

*1 : In the case of QuickGene-Mini80, please refer to the Kit Handbook for details.

* Perform extraction within 30 min after lysate preparation.

Results : total RNA extraction from RS virus solution

total RNA was extracted from RS virus solution using QuickGene system (QuickGene and QuickGene RNA tissue kit S II) and Spin column method (A company).

After culture of the following viral strain transmitted to Hep cells, centrifuging (3,000 rpm, 15 min) was carried out following good achievement of cytopathic effect. Then, the supernatant was used as virus solution.

Hep cells were cultured in DMEM added with 10% FBS.

Viral strains No. 1 : RS virus Long strain

No. 2 : RS virus A2 strain

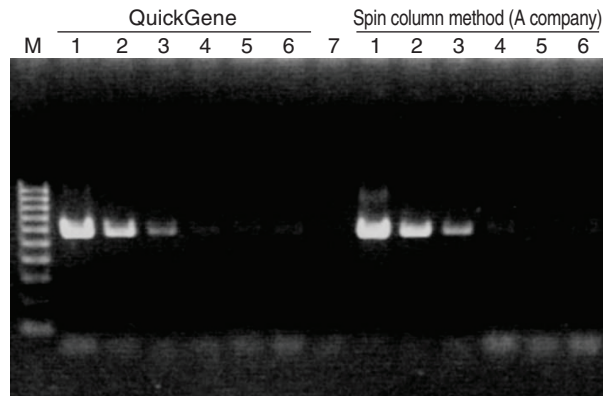
● The purity of total RNA

As absorbance at 280 nm was under detection limit for each total RNA, little contamination of protein is indicated.

● RT-PCR

RT-PCR was performed with primer characteristic to G protein gene of RS virus for total RNA extracted from RS virus solution using QuickGene system and Spin column method (A company).

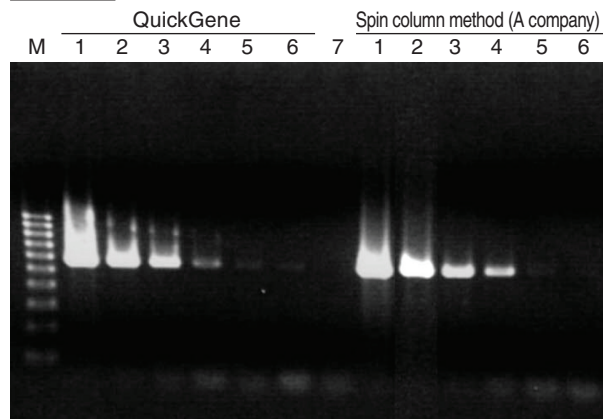
Long strain



Electrophoresis condition : 2% agarose/1 x TAE

M : 100 bp DNA Ladder
 1 : RC virus, 10⁵ pfu/ml
 2 : RC virus, 10⁴ pfu/ml
 3 : RC virus, 10³ pfu/ml
 4 : RC virus, 10² pfu/ml
 5 : RC virus, 10¹ pfu/ml
 6 : RC virus, 1 pfu/ml
 7 : Negative control

A2 strain



RT-PCR products of G protein gene of RS virus were detected for each total RNA.

* Trademark and exclusion item

Right to registered names etc. used in this Application Guide is protected by law especially even in the case of no denotation.

FUJIFILM

FUJIFILM Corporation 7-3, Akasaka 9-Chome, Minato-ku, Tokyo 107-0052, Japan, Tel : +81-3-6271-2158, Fax : +81-3-6271-3136 • E-mail : sginfo@fujifilm.co.jp

FUJIFILM Europe GmbH Heesenstr.31, 40549 Dusseldorf, Germany, Tel:+49-211-5089-174, Fax:+49-211-5089-9144 • E-mail:lifescience@fujifilmeurope.de

FUJIFILM UK Ltd. Unit 12 St Martins Way, St Martins Business Centre, Bedford, MK42 0LF, U.K.,Tel:+44-1234-245291, Fax:+44-1234-245293 • E-mail:lifesciences@fuji.co.uk

富士胶片(中国)投资有限公司 31st floor, Hong Kong New World Tower, No.300 Huai Hai Zhong Road, Shanghai, P.R China, Tel:+86-21-3302-4655 ext.363, Fax:+86-21-6384-3322 • E-mail:wgxian@fujifilm.com.cn

FUJIFILM Medical Systems U.S.A., Inc. Tel:+1-866-902-3854 Fax:+1-203-327-6485 • E-mail:don.wilke@fujimed.com

<http://lifescience.fujifilm.com/>