

## FUJINON Video ENT Endoscopes Specifications



|                           | ER-270FP | ER-270T |
|---------------------------|----------|---------|
| Viewing direction         | Forward  |         |
| Observation range         | 3 ~ 50mm |         |
| Field of view             | 90°      |         |
| Distal end diameter       | 3.5mm    | 4.9mm   |
| Flexible portion diameter | 3.6mm    | 4.9mm   |
| Bending capability : UP   | 130°     |         |
| DOWN                      | 130°     |         |
| Forceps channel diameter  | -        | 2.0mm   |
| Working length            | 300mm    |         |
| Total length              | 553mm    | 570mm   |

ER-270FP

ER-270T

ER-270FP/T

ER-270T Image area & Forceps entry position

### Compact Design with Integrated Video System and Light Source: Optimized for Hospital Use



### EPX-2200 150W Xenon Processor

#### Specifications

|              |   |
|--------------|---|
| TV system    | NTSC/PAL  |
| Power supply | AC120V/230V   |
| Image zoom   | Electronic Zoom X1.00 to X2.00(0.05steps)                       |
| Memory       | Patient data- 44 patients<br>Clinical procedure-20 procedures   |
| Light source | 150watt Xenon lamp (Emergency lamp 75W Halogen lamp)            |
| Dimensions   | 330(W) X 430(D) X 160(H)mm, 13 X 16.9 X 6.3 inches              |
| Weight       | 16kg (35.2lbs)  |
| Image output | Video(BNC) 1 channel S-Video 2 channels<br>RGB-VIDEO 2 channels |

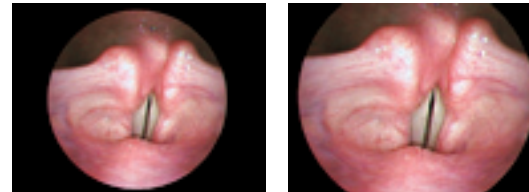
### Space-saving through an Integrated Design



Fujinon has minimized space and maximized function through the integrated design of the EPX-2200. With the light source and processor combined into one small, lightweight unit you can do more in less space.

### Electronic Magnification Function Enlarges High Quality Images

With a single touch of a switch, observation images can be digitally enlarged. You can select the image size freely within the range of 100-200%.



# FUJINON Video ENT Endoscopes



# FUJINON Video ENT Endoscopes

We proudly introduce our video ENT endoscopes, the ER-270FP and ER-270T.

Designed to provide a higher level of imaging capability than ever believed possible in small diameter endoscopes, these technically advanced scopes open the door to a new era in video diagnostics and patient comfort.

Also designed for ease-of-use in both hospital and office settings, the ER-270FP and ER-270T are used in Fujinon's small, lightweight EPX-2200 processor and light source unit. Fujinon Video ENT Endoscopes opens the door to an era of video diagnosis.

## ENT Excellence — Redefined, Reinvented, and Remarkable.

Fujinon Video ENT Endoscopes are electronic endoscopes developed through the collection of cutting-edge technologies to realize "ENT Excellences." Not only do they contribute to the diagnosis and observation of the otolaryngological area including the vocal cords, nasal cavity, and eardrum, they answer the needs for increased speed, safety, and validity in endoscopic diagnosis.

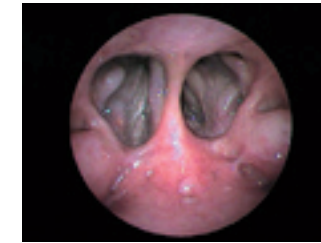


## Excellent Image — Redefined

Bright and clear, the high-resolution images redefine traditional ENT imaging through the adoption of a new, ultra-compact, high-density CCD chip.



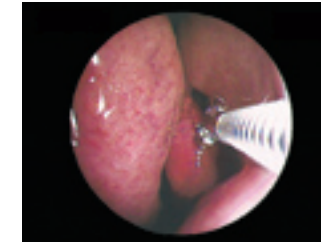
ER-270FP



ER-270FP



ER-270T



ER-270T

## Excellent Ergonomics — Reinvented

Fujinon has reinvented physician comfort and reduced overall fatigue with a new small, lightweight simple design.

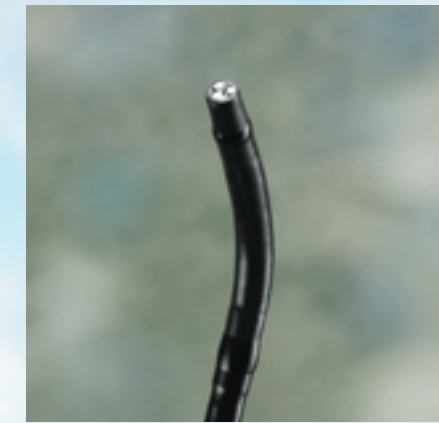
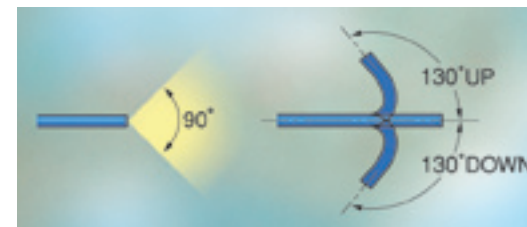


## Excellent Insertion — Remarkable

In order to dramatically improve patient comfort without compromising clinical diagnosis, Fujinon developed its most remarkable endoscopes. At 3.5mm the FP offers superior clinical diagnosis and at 4.9mm (with a 2.0mm channel) the T offers exceptional comfort with therapeutic intervention.

## Wide Observation Range and Extended Bending Capability

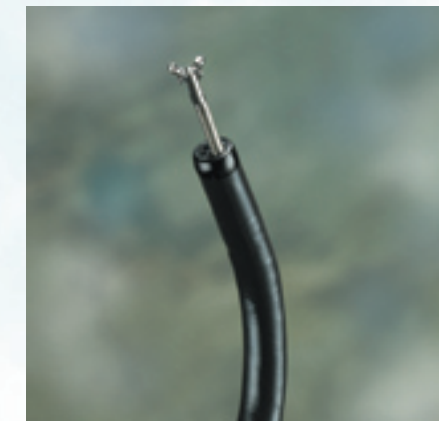
A wide 90° angle of view and extended bending capability of 130° provide for improved observation, maneuverability, and orientation in the nasal cavity.



Distal end diameter:  
3.5mm

## ER-270FP

The ER-270FP is a pure observation video endoscope. Only 3.5mm at the distal end, the FP offers exceptional maneuverability and insertion capability, both of which maximize physician and patient comfort.



Distal end diameter:  
4.9mm  
Forceps channel diameter:  
2.0mm

## ER-270T

The ER-270T allows for advanced therapeutics with exceptional optics. Although therapeutic, the distal end diameter is a slim 4.9mm and incorporates a generous 2.0mm working channel. In addition the incorporated suction button allows for the removal of mucus during therapy.