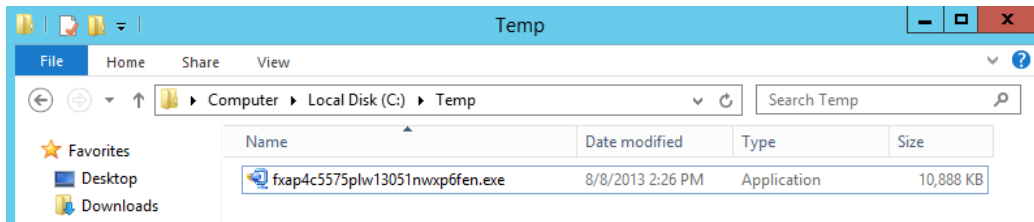


This document describes how to install printer driver on Windows Server® 2012 and Windows Server® 2012 R2 from “Add Printer” (This document provides description using screenshots of Windows Server® 2012).

1) You can download the latest driver from our web site.

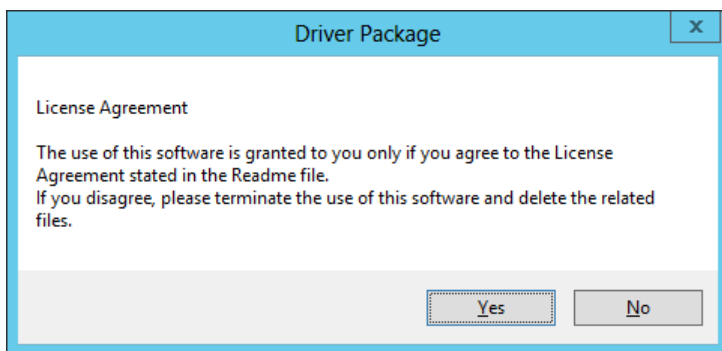
You will download the driver to C:\Temp in this document.



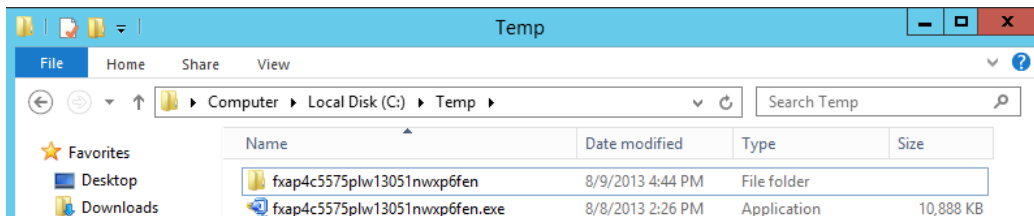
2) Double-click the downloaded compressed file to decompress.

When decompressing, License Agreement is displayed. Click “Yes” to continue.

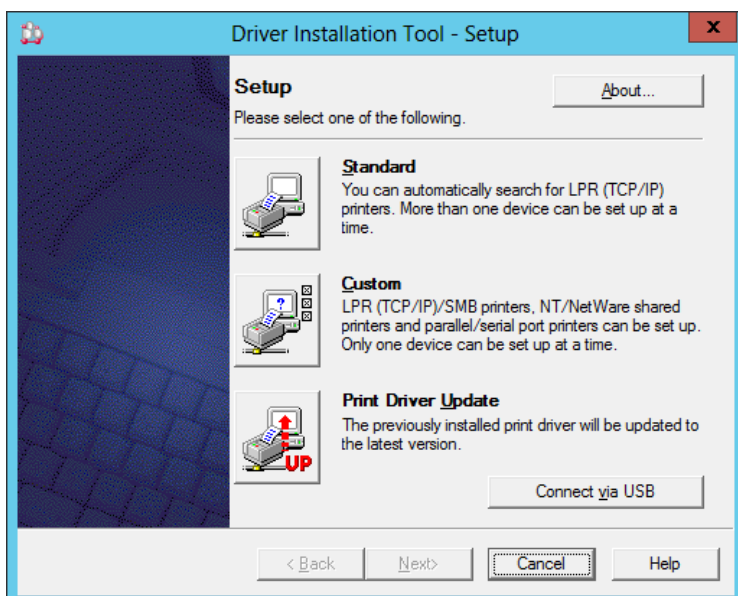
Depending on the downloaded file, License Agreement may not be displayed.



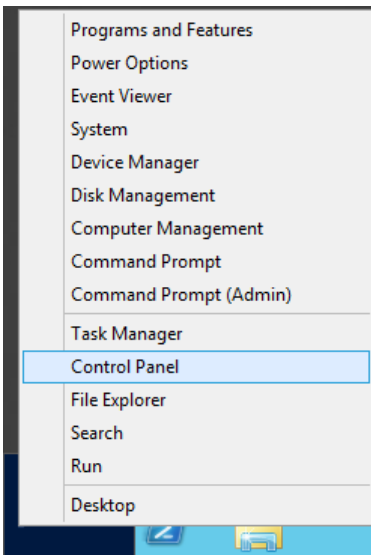
The file will be decompressed into the same location as the downloaded file.



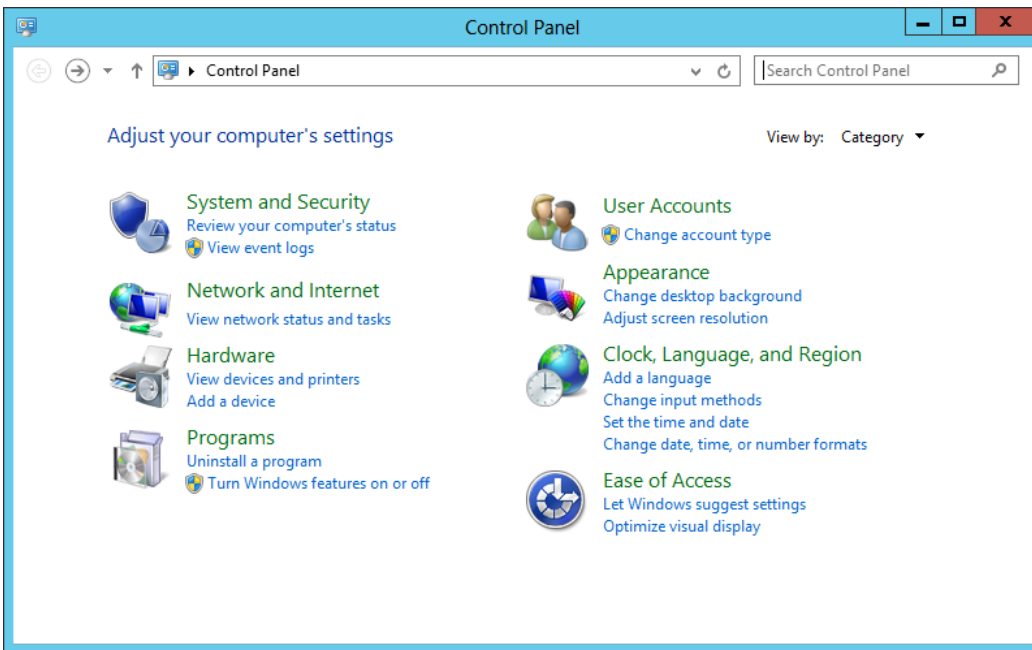
3) Driver Installation Tool is displayed automatically. To install the driver from “Add Printer”, click “Cancel” and close the Driver Installation Tool. Depending on the downloaded file, Driver Installation Tool may not be supported.



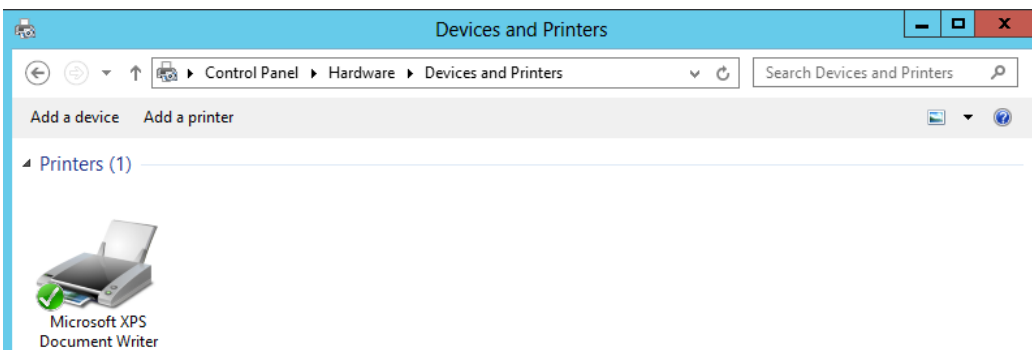
4) Click “Windows Key” and “X” to display the menu, and select “Control Panel”.



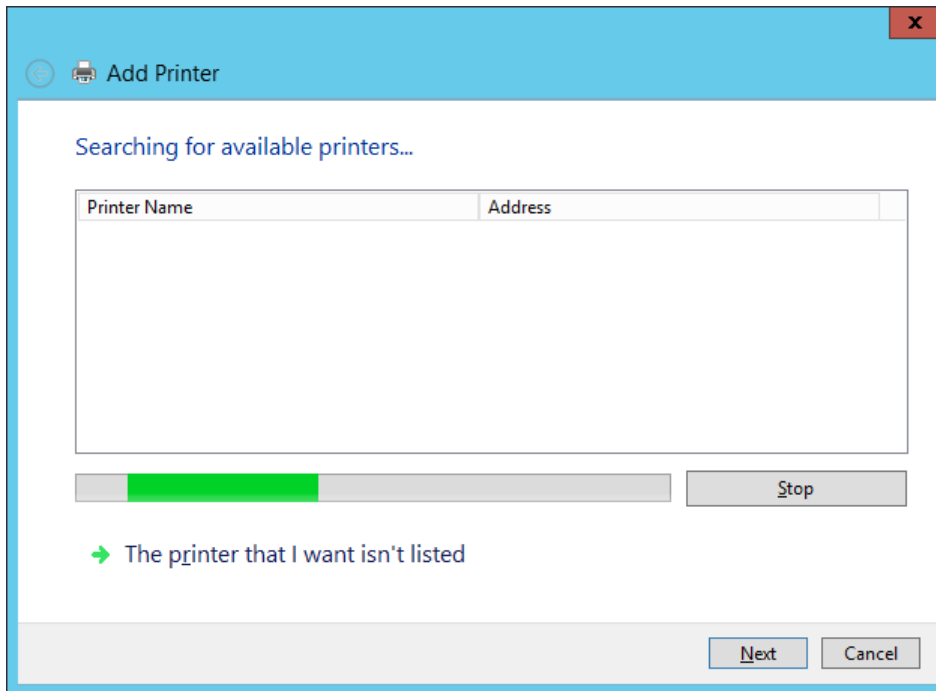
5) Select “View devices and printers”.



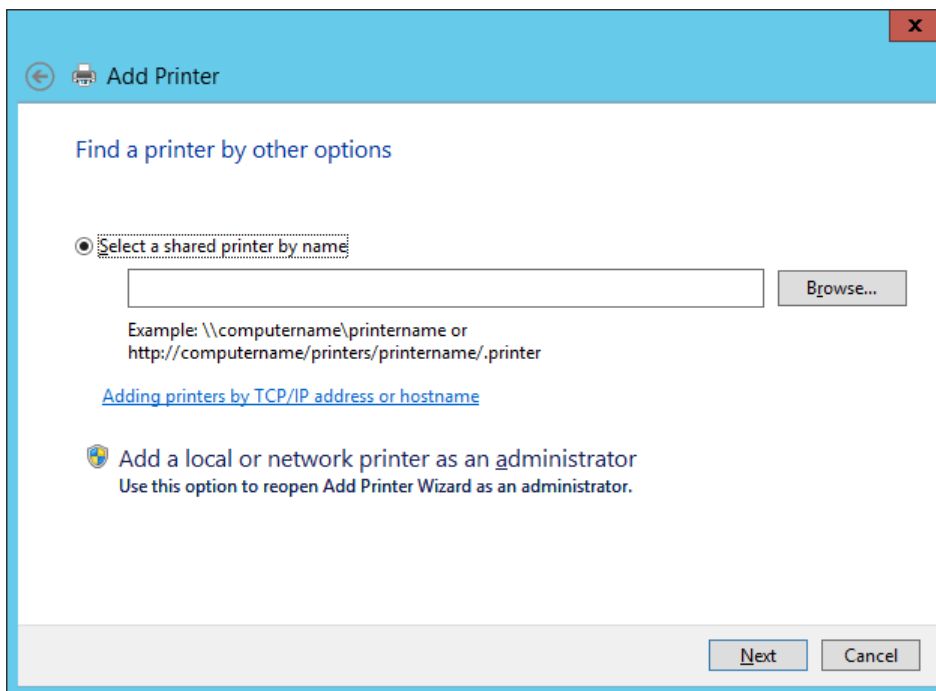
6) Select “Add a printer”.



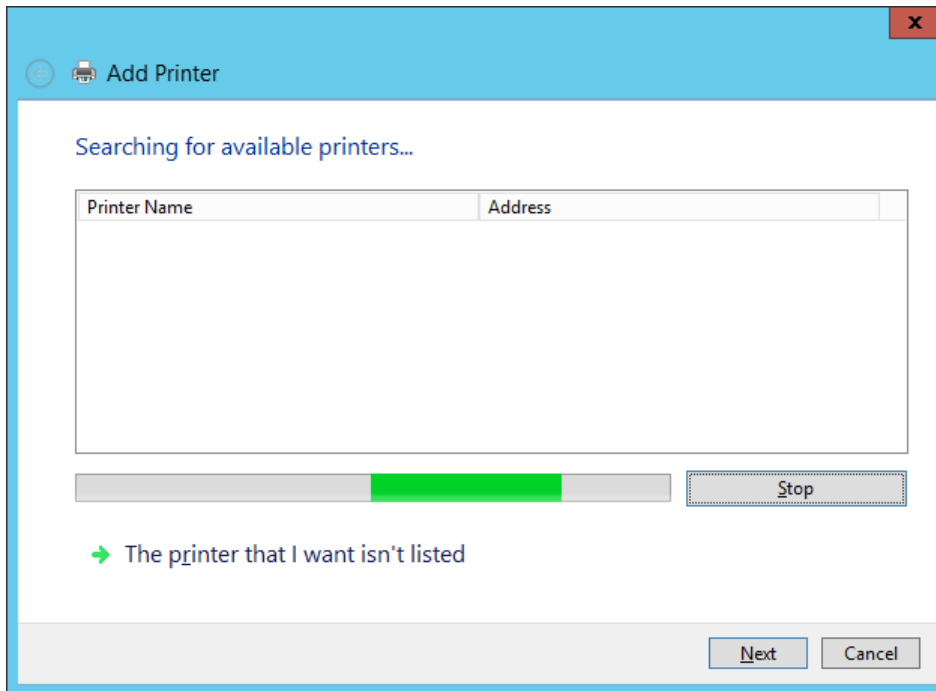
- 7) Search for available printers starts. If the target printer is not listed, select “The printer that I want isn’t listed” and click “Next”.



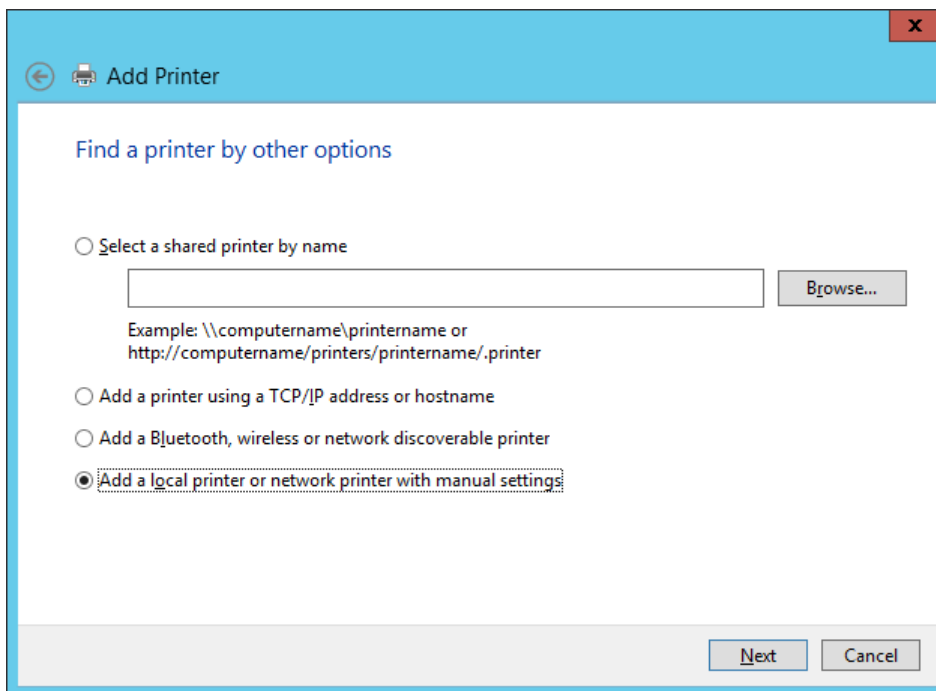
- 8) Select “Add a local or network printer as an administrator”.



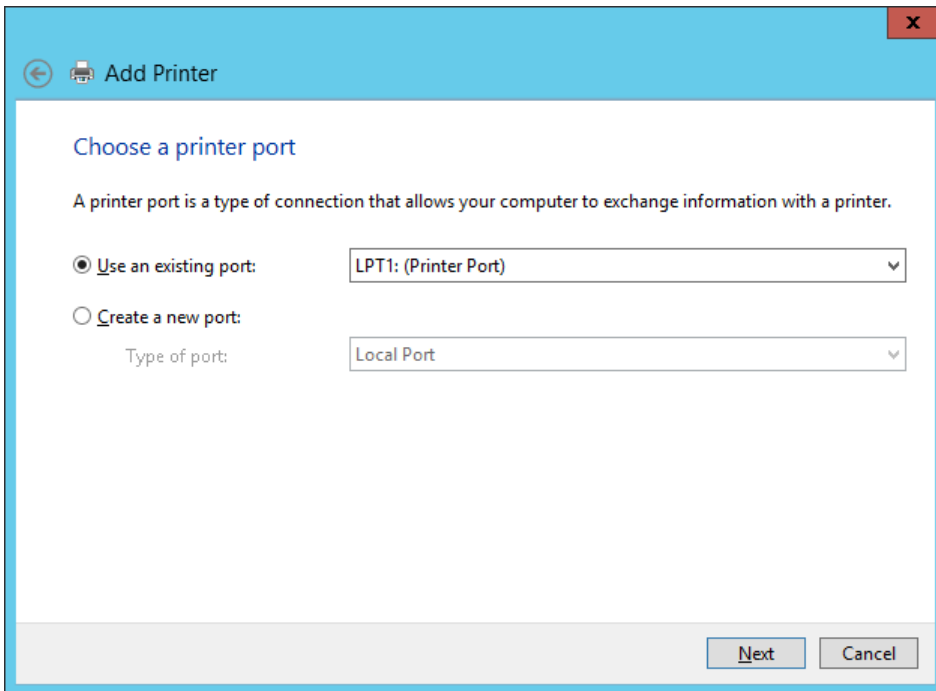
- 9) Searching for available printers starts again. If the target printer is still not listed, select “The printer that I want isn’t listed” again as you did in the step 7).



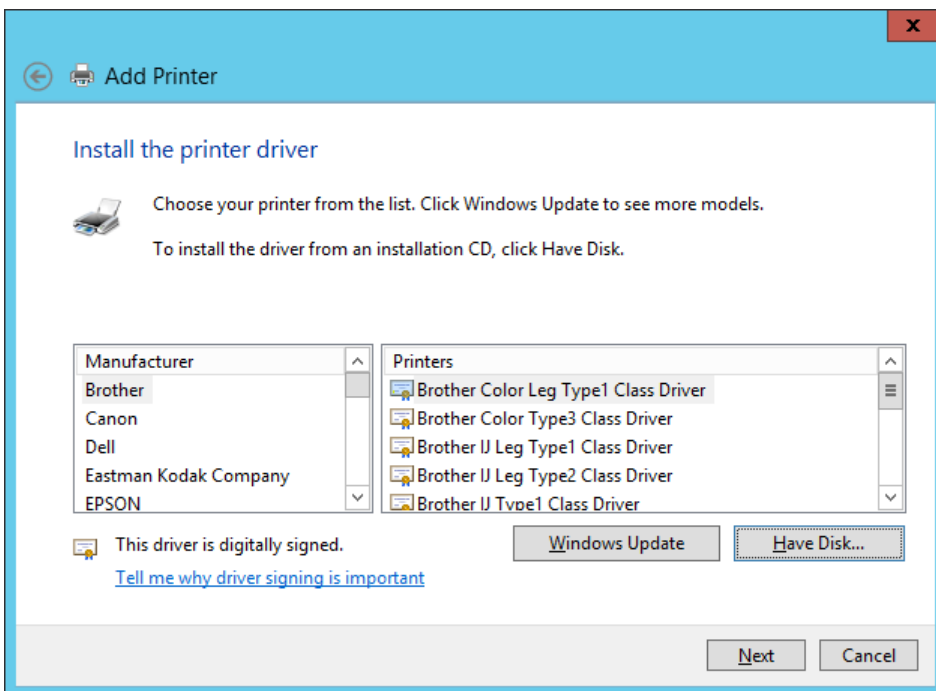
- 10) Select the type of printer to use and click “Next”.



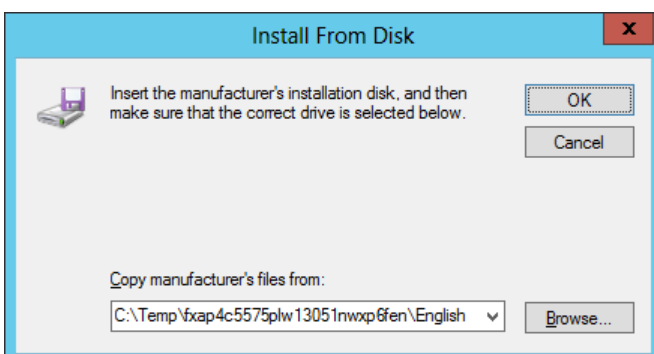
11) If “Add a local printer or network printer with manual settings” was specified in the step 10), this pane is displayed. Select the port to use and click “Next”.



12) Click “Have Disk”.

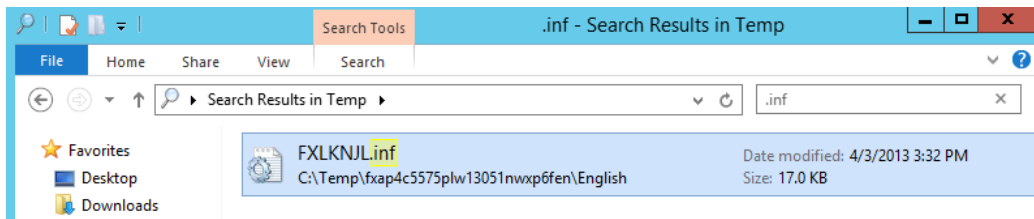


13) Specify the directory containing the uncompressed files in previous step in the "Copy manufacturer's files from" box. Click "OK".

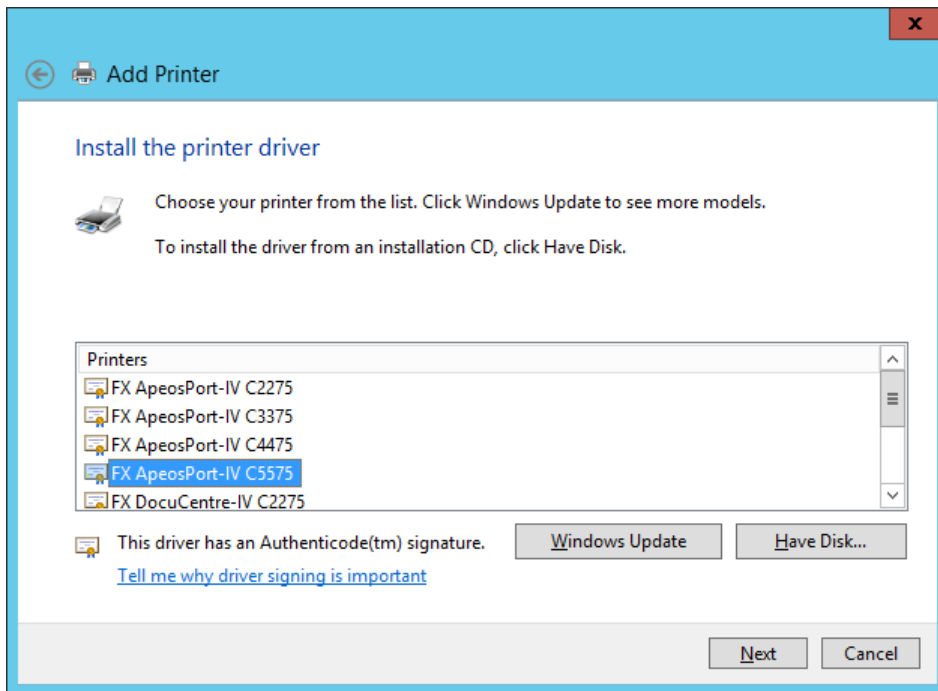


The way to search reference is as follows.

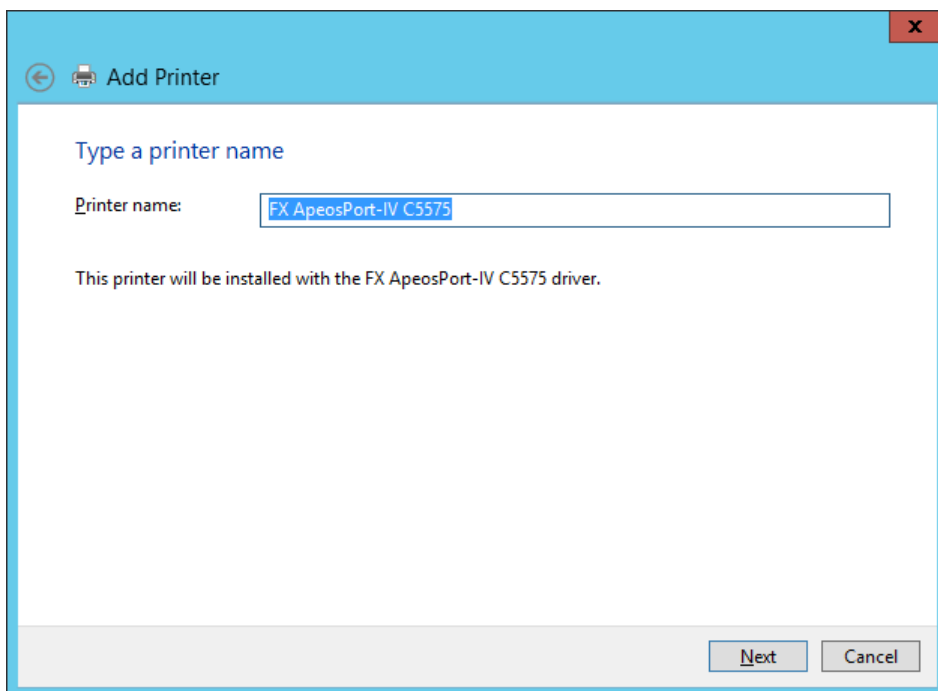
Show the location where uncompressed files are saved (c:\Temp) and enter ".inf" in the text box at the upper right corner. Search will start and the location of inf file will be displayed on the "Search Results" window.



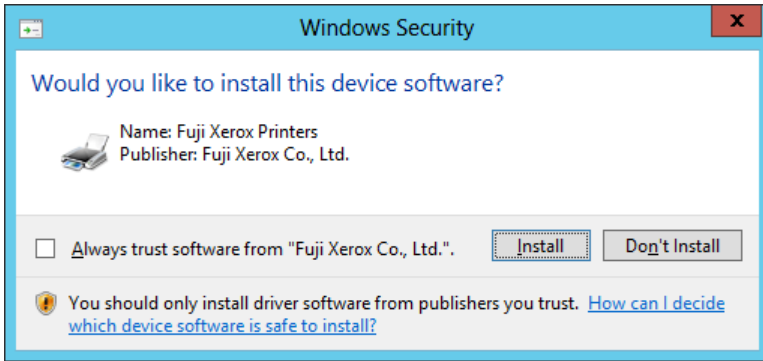
14) Select the correct print driver, and click "Next".



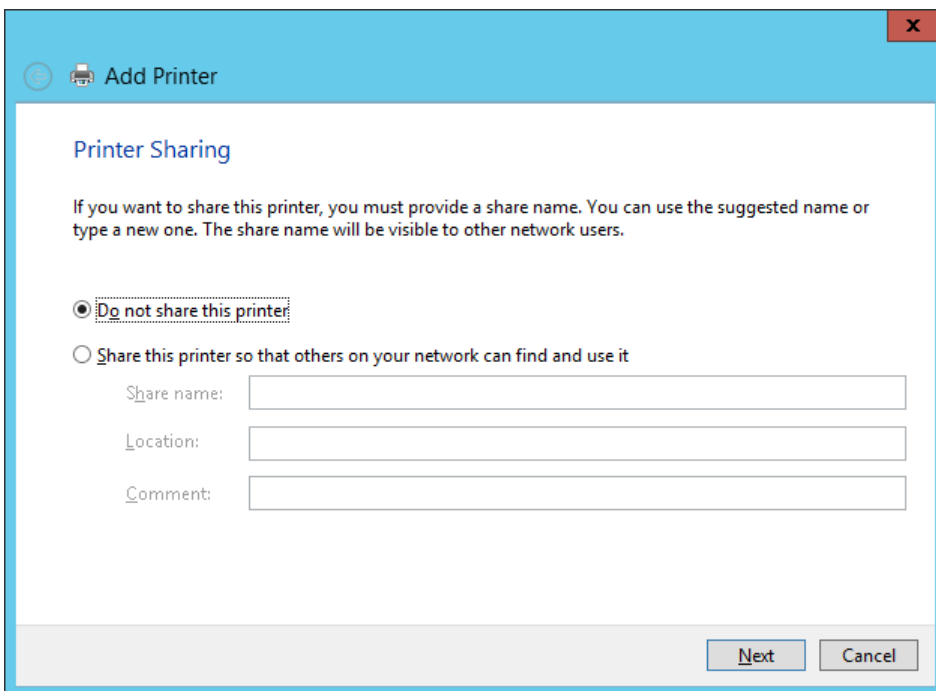
15) A dialog box for specifying the printer name is displayed. To change the printer name, enter any name in the "Printer name" box.



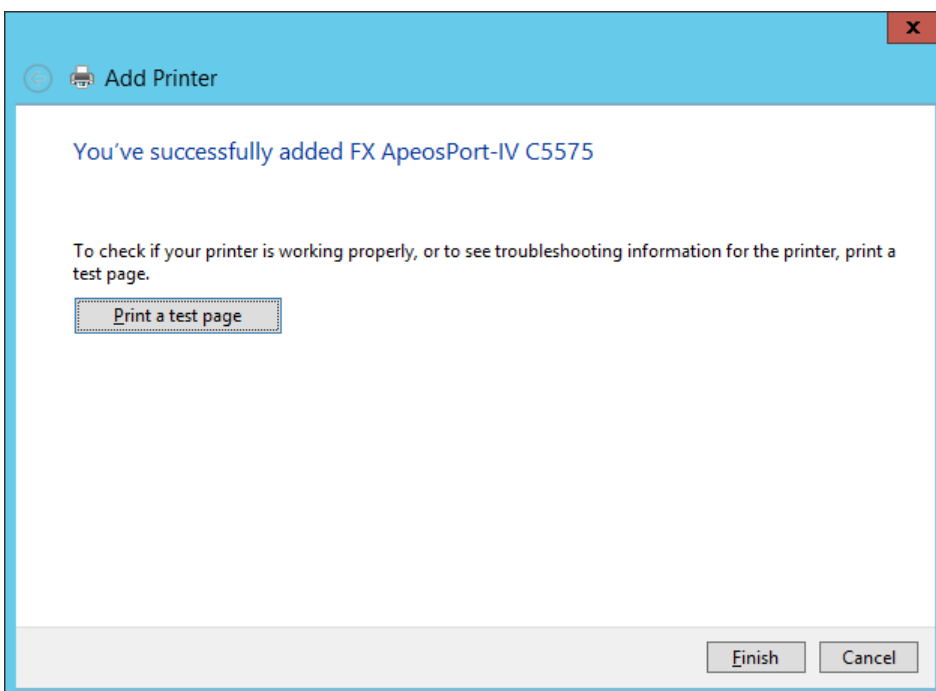
16) A message on Windows Security to confirm if you continue installation may be displayed, but this does not cause any functional problem. Click “Install” and continue.



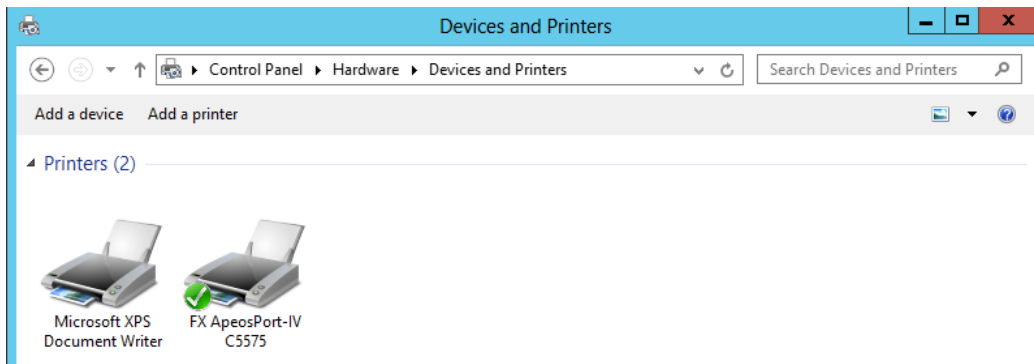
17) Specify whether to share this printer with other network users. Make sharing settings in this dialog and click "Next".



18) To print the test page, load paper to the printer, click “Print a test page” and then click “Finish”.



19) A new icon is displayed in the “Devices and Printers” folder.



This is the end of the installation.