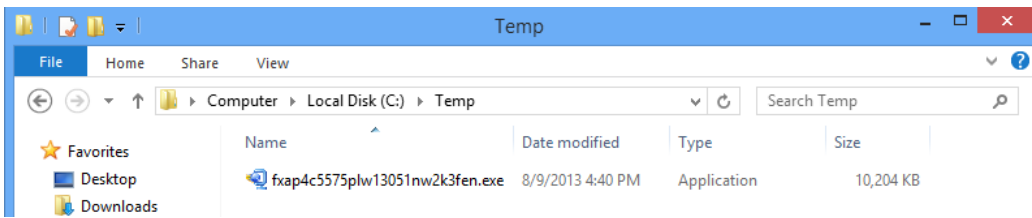
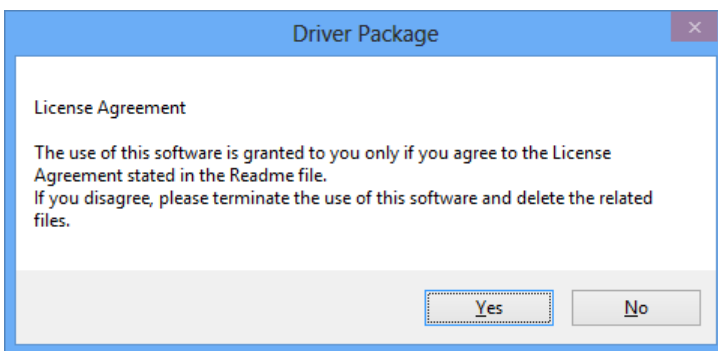


This document describes how to install printer driver on Windows® 8 and Windows® 8.1 from “Add Printer” (This document provides description using screenshots of Windows 8).

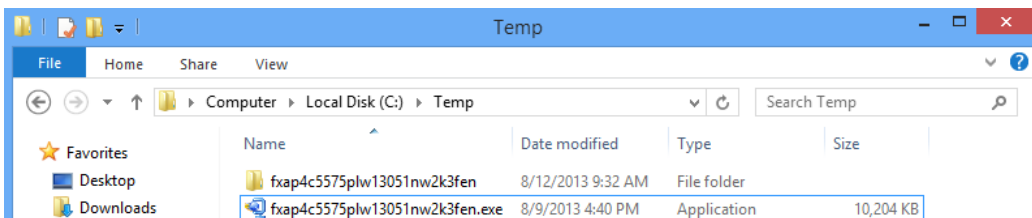
- 1) You can download the latest driver from our web site.
You will download the driver to C:\Temp in this document.



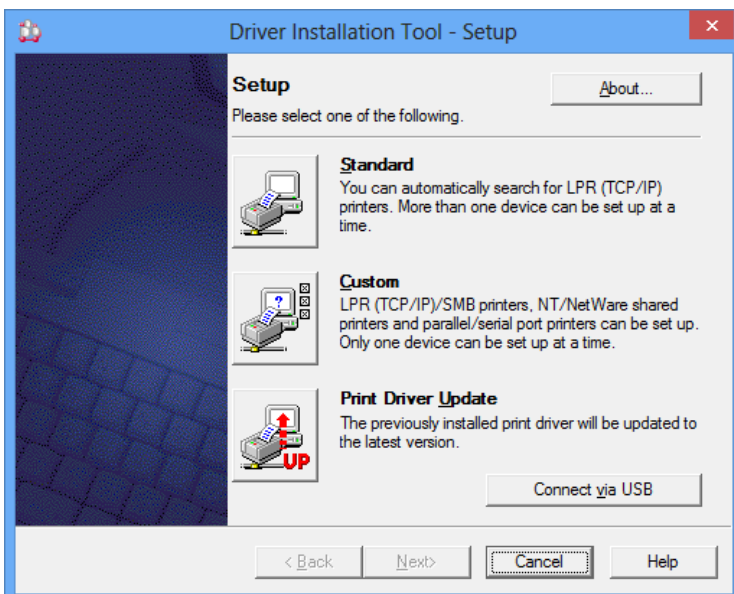
- 2) Double-click the downloaded compressed file to decompress.
When decompressing, License Agreement is displayed. Click “Yes” to continue.
Depending on the downloaded file, License Agreement may not be displayed.



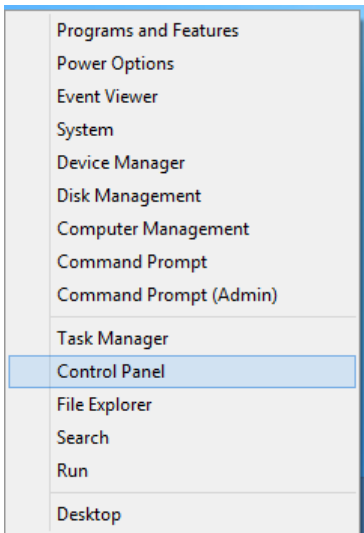
The file will be decompressed into the same location as the downloaded file.



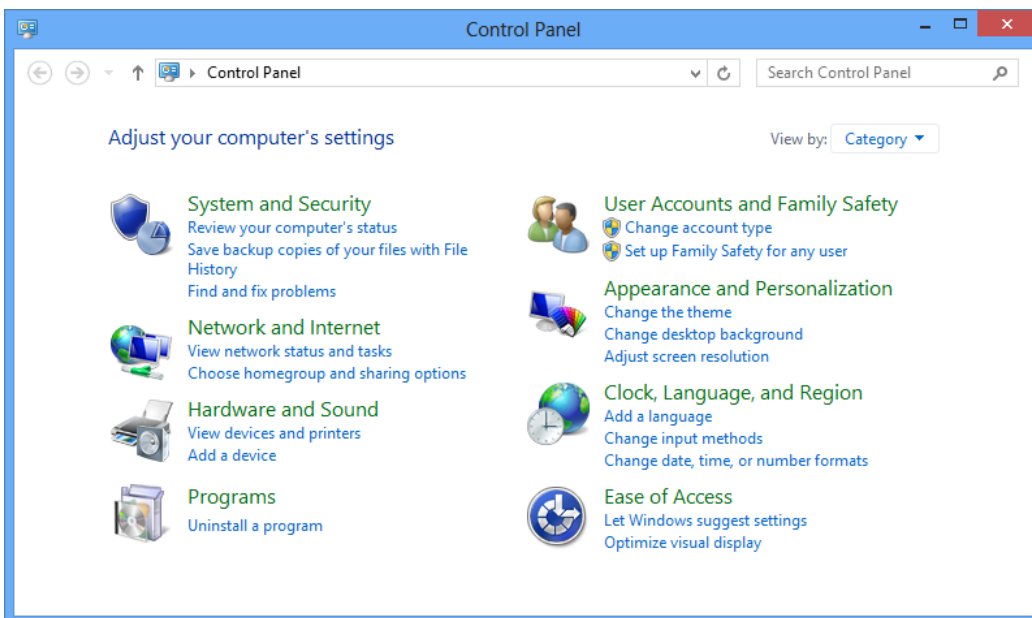
- 3) Driver Installation Tool is displayed automatically. To install the driver from “Add Printer”, click “Cancel” and close the Driver Installation Tool. Depending on the downloaded file, Driver Installation Tool may not be supported.



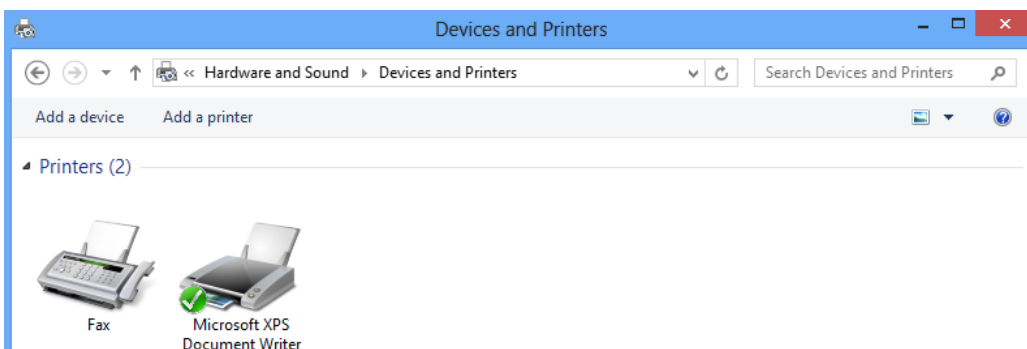
4) Click “Windows Key” and “X” to display the menu, and select “Control Panel”.



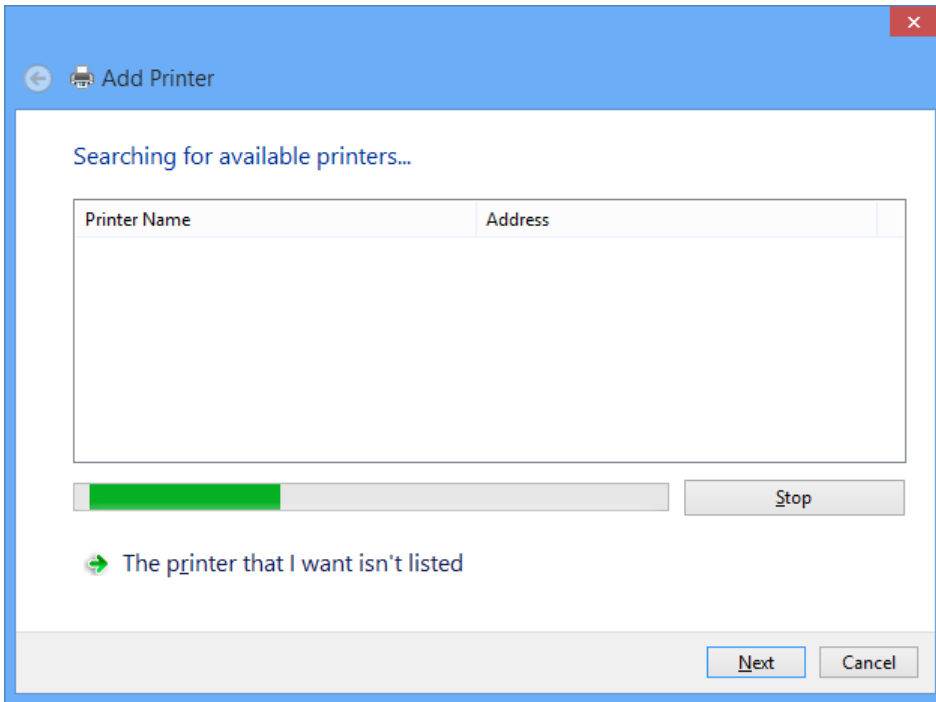
5) “Control Panel” is displayed. Select “View devices and printers”.



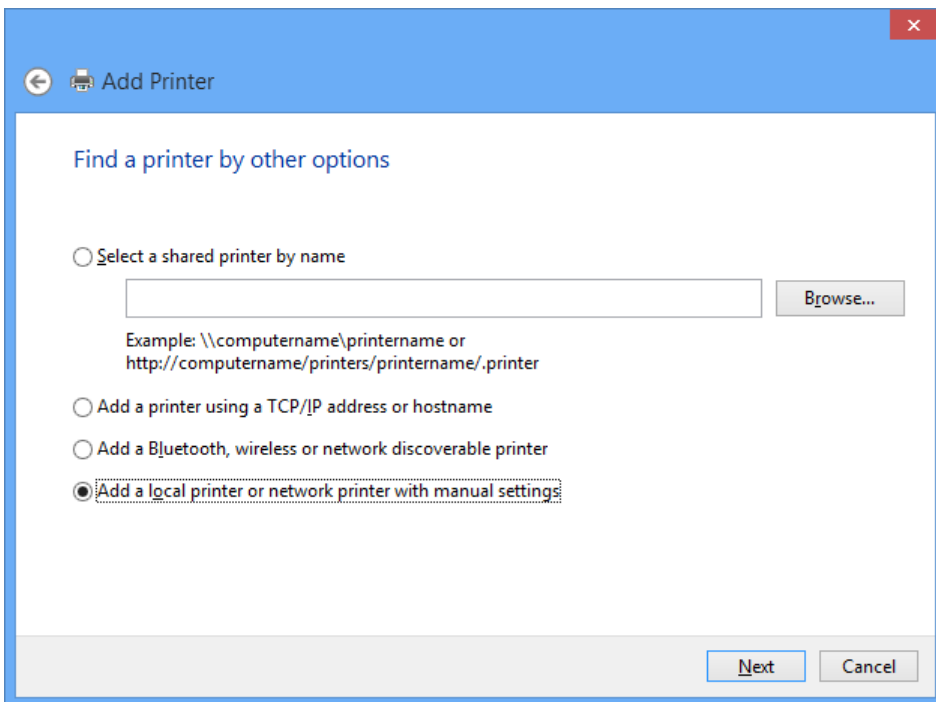
6) “Devices and Printers” folder is displayed. Select “Add a printer”.



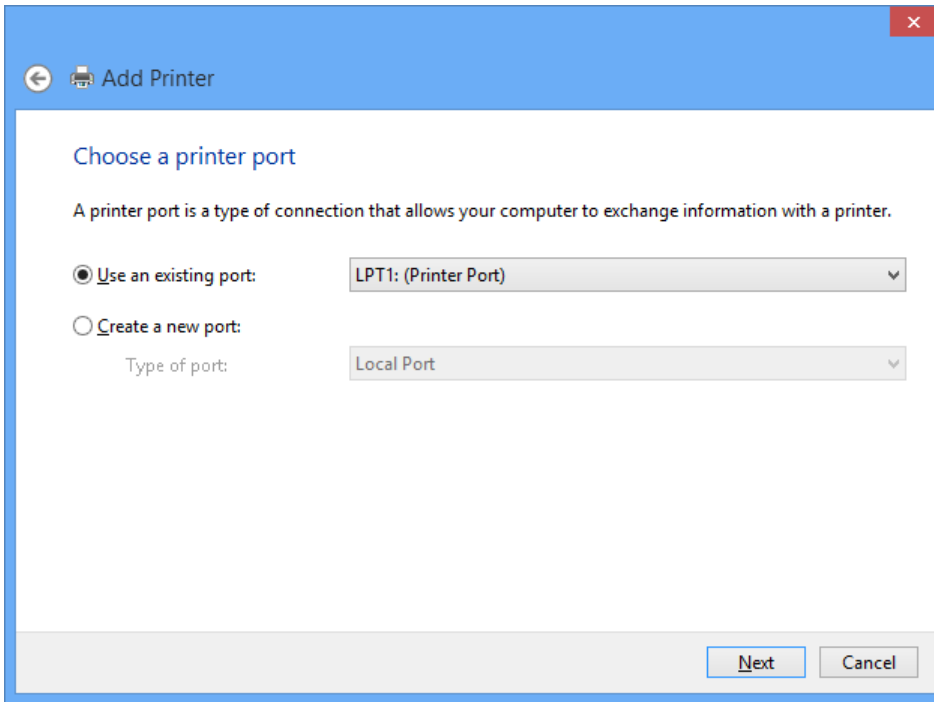
- 7) Search for available printers starts. If the target printer is not listed, select “The printer that I want isn’t listed” and click “Next”.



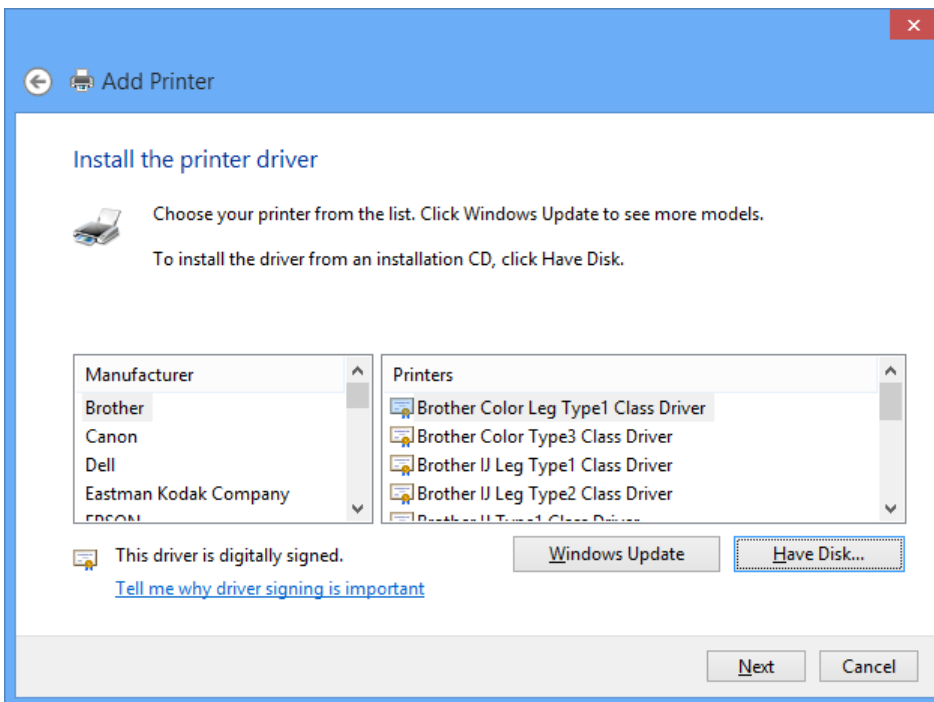
- 8) Select the way to add a printer and click “Next”.



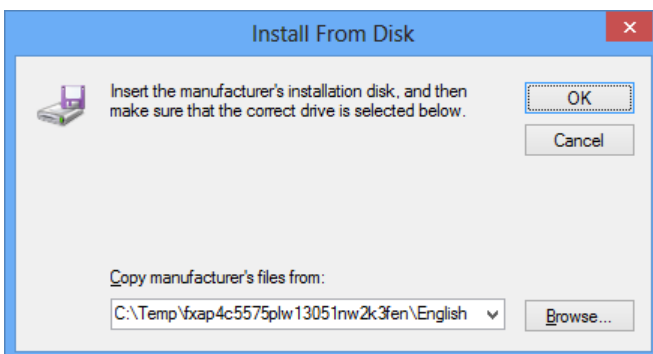
- 9) If “Add a local printer or network printer with manual settings” was specified in the step 8), this pane is displayed. Select the port to use and click “Next”.



- 10) Click “Have Disk”.

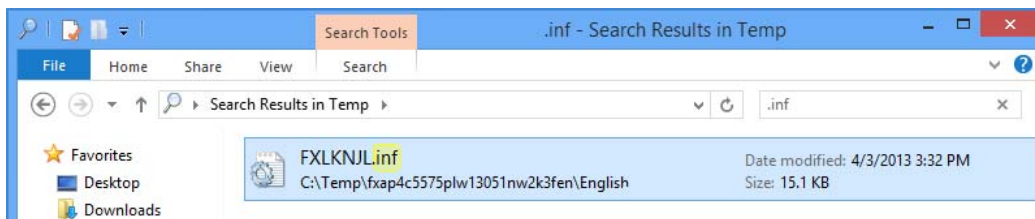


- 11) Specify the directory containing the uncompressed files in previous step in the "Copy manufacturer's files from" box. Click "OK".

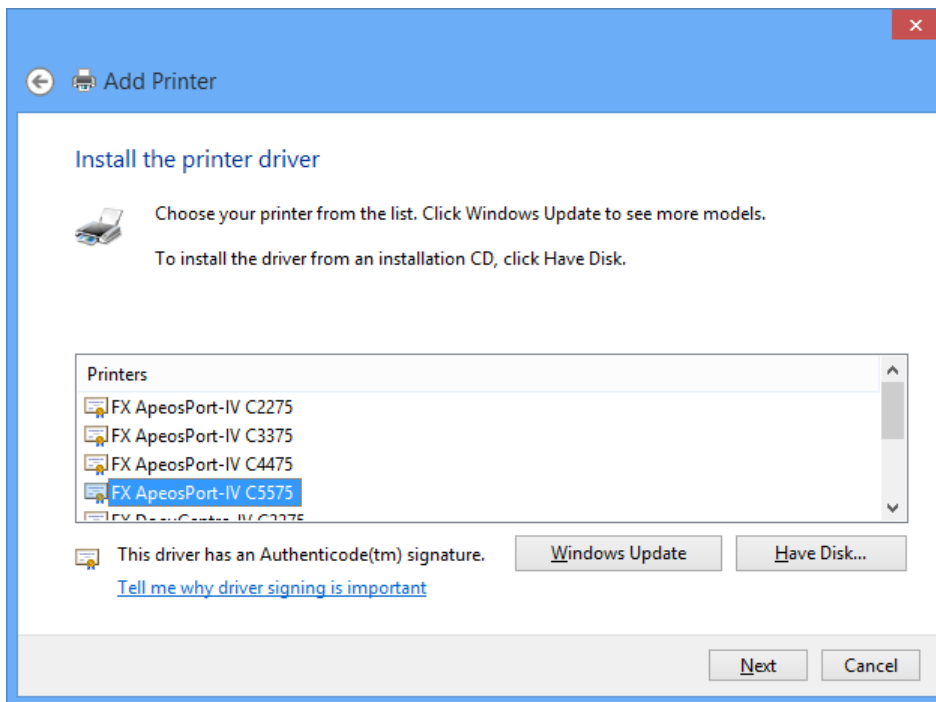


The way to search reference is as follows.

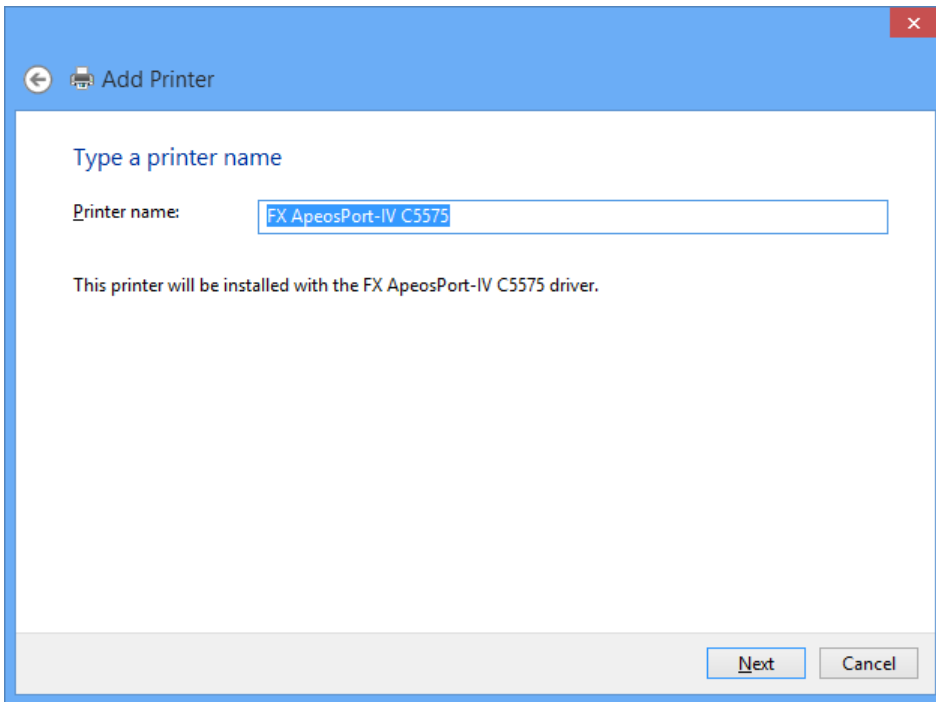
Show the location where uncompressed files are saved (c:\Temp) and enter ".inf" in the text box at the upper right corner. Search will start and the location of inf file will be displayed on the "Search Results" window.



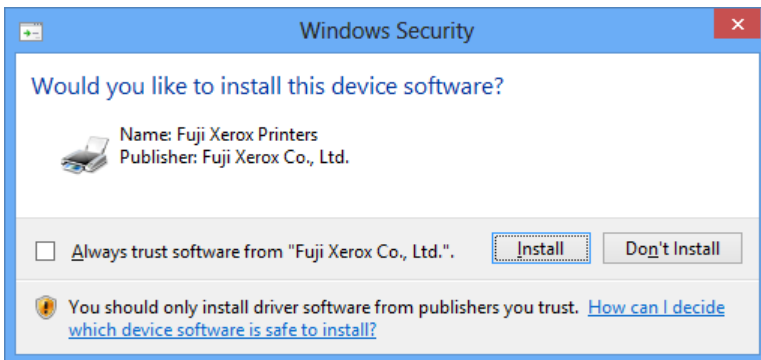
12) Select the correct print driver, and click "Next".



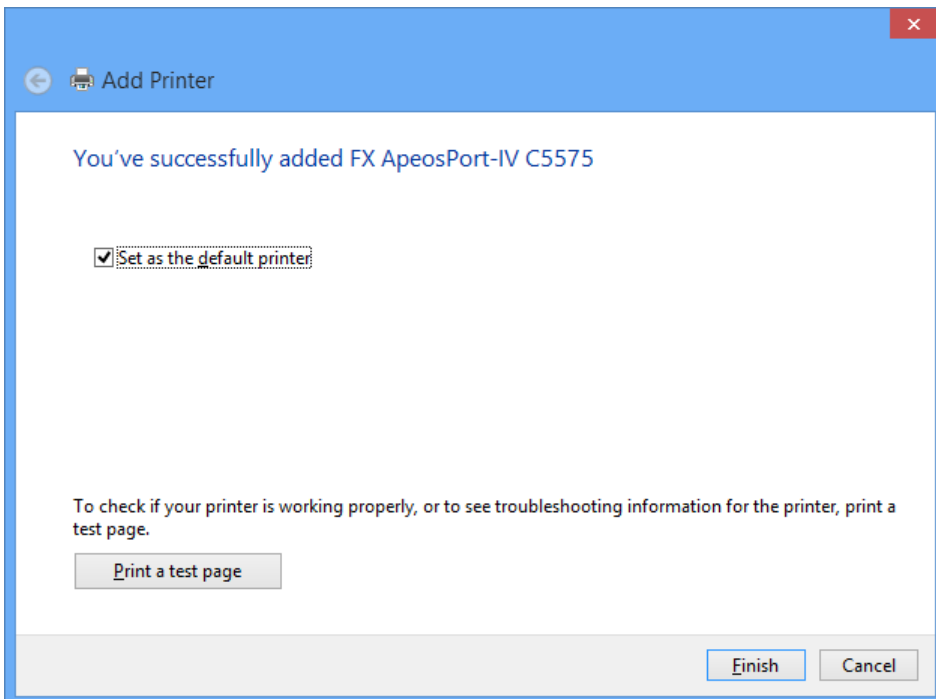
13) A dialog box for specifying the printer name is displayed. To change the printer name, enter any name in the "Printer name" box.



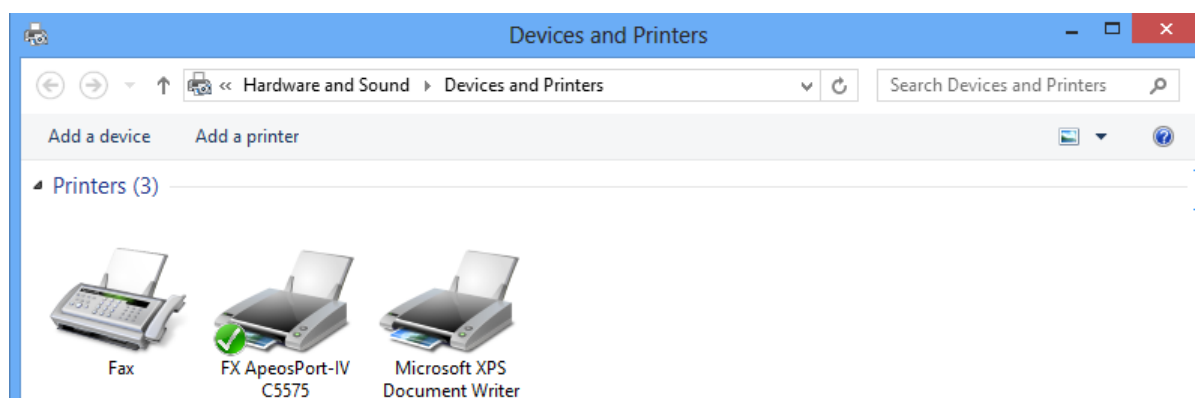
14) A message on Windows Security will be displayed. Click "Install".



15) To print the test page, load paper to the printer, click "Print a test page" and then click "Finish".



16) A new icon is displayed in the “Devices and Printers” folder.



This is the end of the installation.