

客戶成功案例分享

Case Study of Kintone

全球IT服務供應商 Global IT Service Provider

將顧客資訊與銷售資料連結至Kintone以集中管理，從而清楚掌握銷售進度。當所有報價和會議紀錄都實時顯示在同一平台，就可以迅速作出更準確的決策。銷售案例亦在短時間內增加了15%。

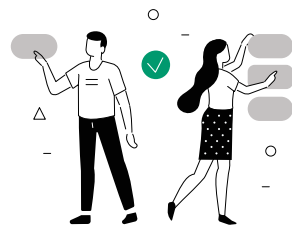
Link customer information and sales data to Kintone for centralized management, gaining a clear overview of sales progress. When all quotations and meeting records are displayed in real-time on the same platform, more accurate decisions can be made quickly. Sales cases also increased by 15% within a short period.



市場研究及諮詢服務供應商 Market Research & Consultancy Service Provider

不但價錢合理，而且很容易就建立了一個屬於公司的系統。Kintone可以無限新增多個「應用程式」及「交流空間」。無需編碼，非常簡單快捷，給我們更大的自由度去修改程序，從而降低運作成本。

Not only is the price reasonable, but it is also easy to establish a system tailored to the company. Kintone allows unlimited addition of "applications" and "spaces". No coding is required, making it very simple and quick, providing us with greater flexibility to modify processes and reduce operational costs.



Kintone助你提高團隊合作效率，並建構更緊密的客戶關係

Kintone helps you improve team collaboration efficiency and build closer customer relationships

專屬的客戶關係管理方案滿足你所需。
全球超過30,000間企業都已經使用Kintone協助管理業務。

A dedicated CRM solution meets your needs. Over 30,000 companies worldwide have already been using Kintone to assist with business management.

行業包括 Widely utilized in diverse industries



聯絡我們
Contact Us



Kintone

簡化管理流程的明智方法

Streamlining Your Workflow the Smart Way



你在日常營運中，是否遇到這些問題？
Are you facing these issues in your daily operations?

報銷支出管理 Expense Claim Management

依賴紙張和人手操作
Paper-based processes and manual work

難以找到相關報銷紀錄
Difficulty in locating claim records

難以追蹤每項報銷狀況
Difficulty in tracking claim status

出缺勤、請假紀錄管理 Leave and Absence Management

雜亂的請假紀錄
Messy leave records

批假流程缺乏效率
Slow leave approval process

計算假期餘額耗時
Considerable time required for calculating leave balance

統計出席率費時
Significant time consumed in computing attendance statistics

需要整合多個資料來源
Need for merging data from multiple data sources

難以準確核對員工出勤紀錄
Difficulty in cross-checking employee attendance records

