

Quick Reference Notes – Print Envelope

簡易操作-信封打印



CONTENTS

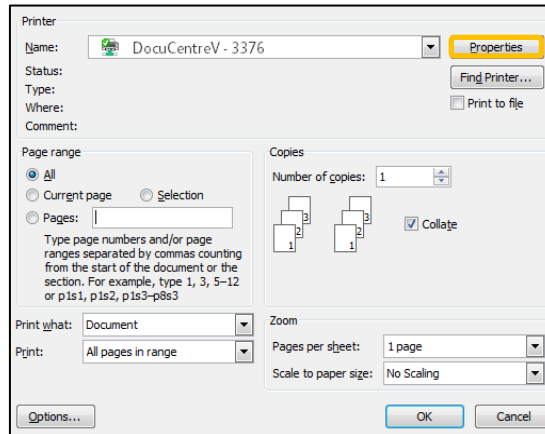
目錄

1	Address Book 通訊簿	2
1.1	Registering Recipients 登記收件人	Error! Bookmark not defined.
1.2	Editing Recipient 編輯收件人	Error! Bookmark not defined.
1.3	Deleting Recipient 刪除收件人	Error! Bookmark not defined.
1.4	Adding Recipient to [Favourites] 將聯絡人加到[我的最愛]	Error! Bookmark not defined.
2	Address Book Operation Through CentreWare Internet Services (CWIS) 使用 CentreWare Internet Services (CWIS)進行通訊簿操作	Error! Bookmark not defined.
2.1	Registering Recipients 登記聯絡人	Error! Bookmark not defined.
2.2	Editing Recipient 編輯聯絡人	Error! Bookmark not defined.
2.3	Deleting Recipient 刪除聯絡人	Error! Bookmark not defined.

1 SET ENVELOPE SIZE 設置信封大小

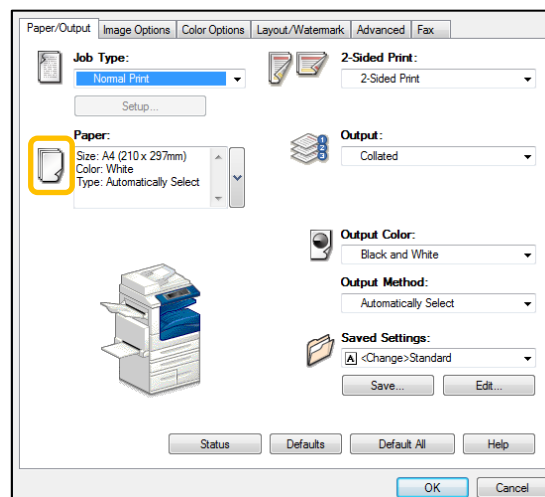
1. Select [Properties].

1. 選擇 [內容]。



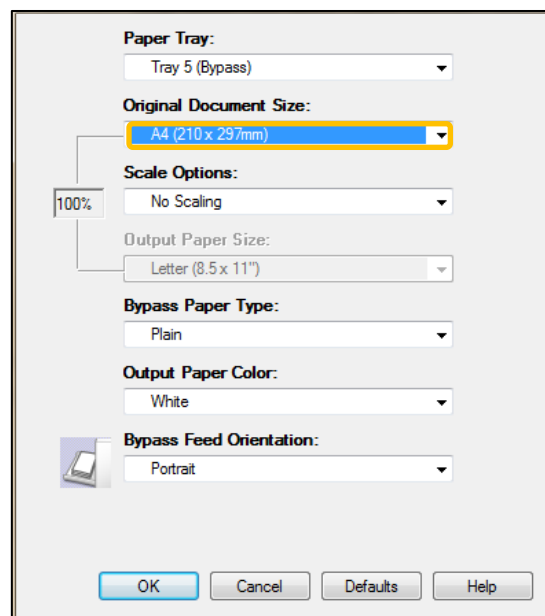
2. Select the paper icon.

2. 選擇紙張圖示。



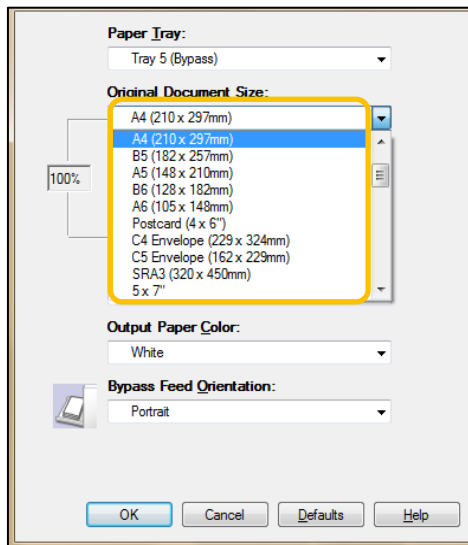
3. Select [Original Document Size].

3. 選擇 [原稿尺寸大小]。



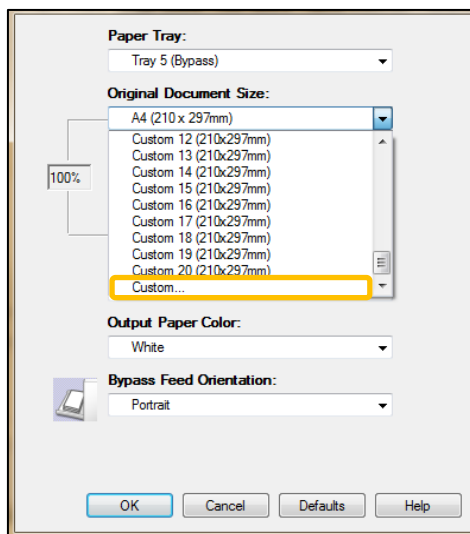
4. Select an envelope size.

4. 選擇信封大小。



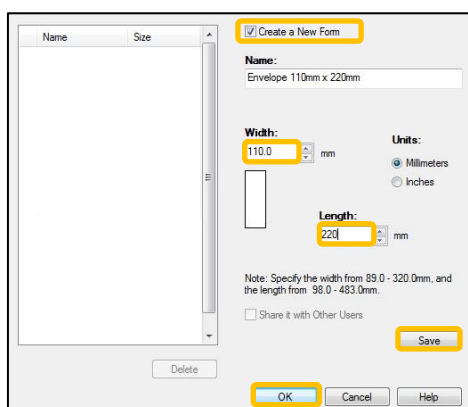
5. If no suitable size is available, scroll down and select [Custom].

5. 若信封大小不在清單內，將選項向下移及選擇 [自定大小]。



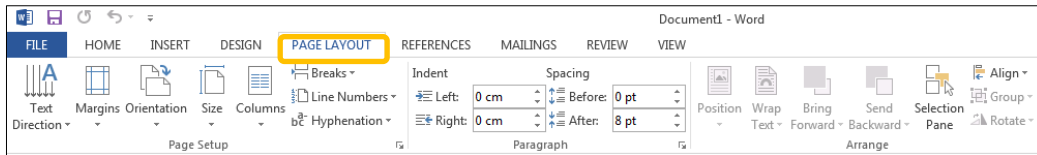
6. Select [Create a New Form]. enter length and width. Then Select [Save] and [OK].

6. 選擇 [新登記] 及輸入長度和闊度，然後選擇 [儲存] 及 [確定]。



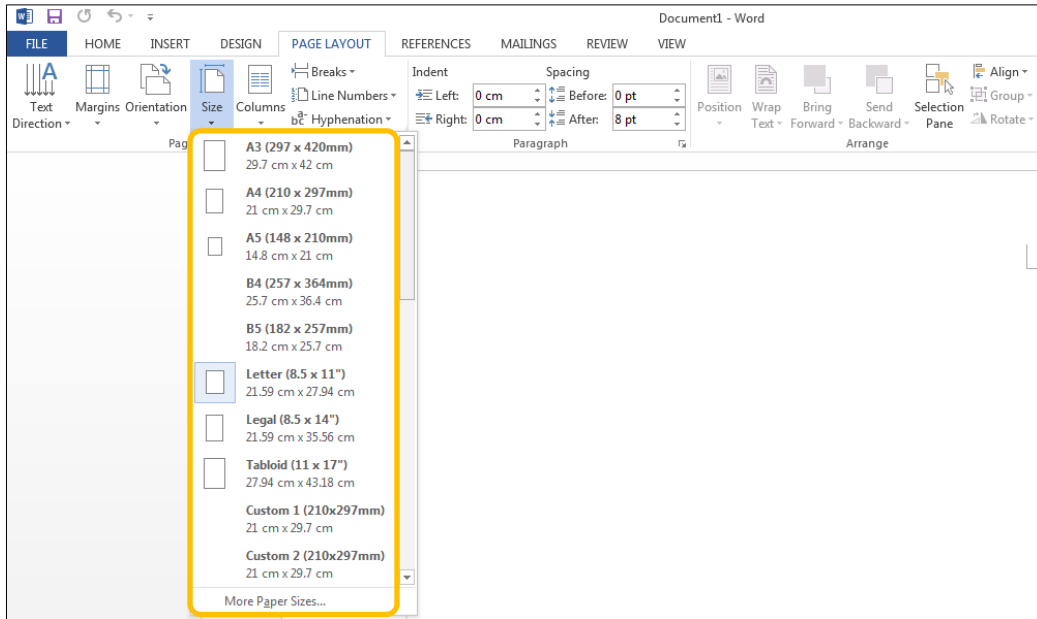
7. Select [Page Layout] and then [Size].

7. 選擇 [版面配置] 及 [大小]。



8. Select envelope size.

8. 選擇信封大小。



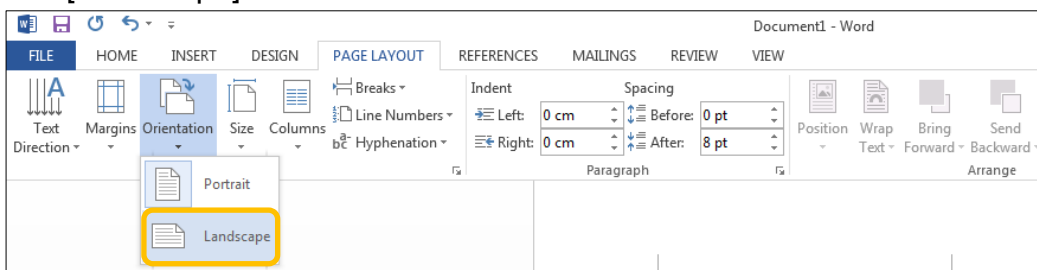
9. Select [Orientation].

9. 選擇 [方向]。



10. Select [Landscape].

10. 選擇 [橫向]。

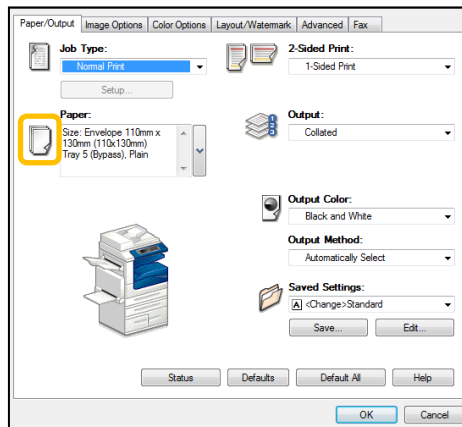


2 SET PAPER ATTRIBUTES 設置紙張選項

2.1 SELECT PAPER TYPE 選擇紙張種類

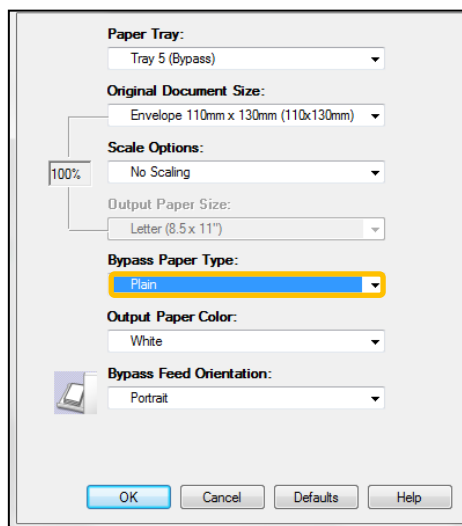
1. Click the Paper icon.

1. 選擇紙張圖示。



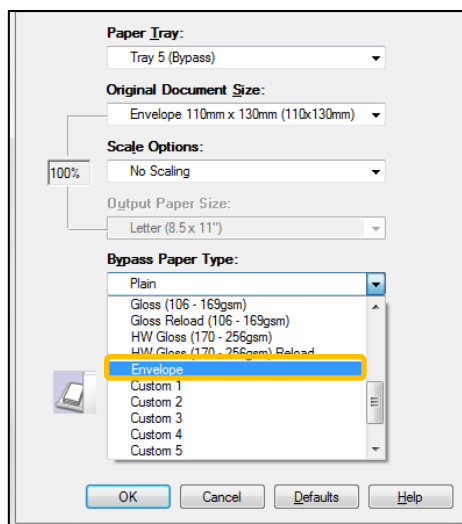
2. Select [Bypass Paper Type].

2. 選擇 [紙張種類]。



3. Scroll down and select [Envelope].

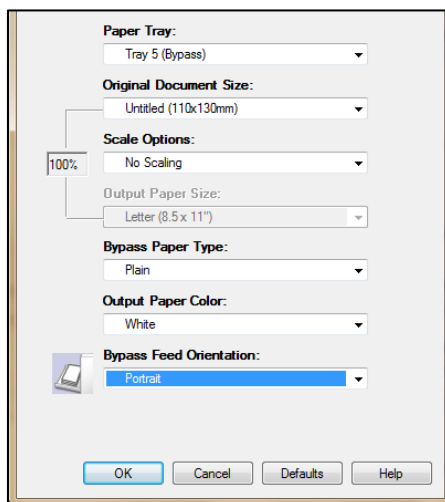
3. 將選項向下移及選擇 [信封]。



2.2 SELECT ORIENTATION 選擇方向

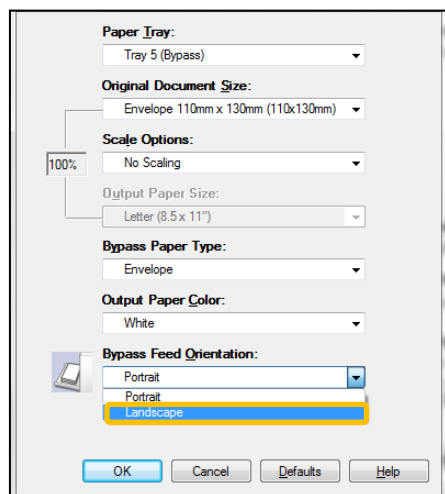
1. Select [Bypass Feed Orientation].

1. 選擇 [方向]。



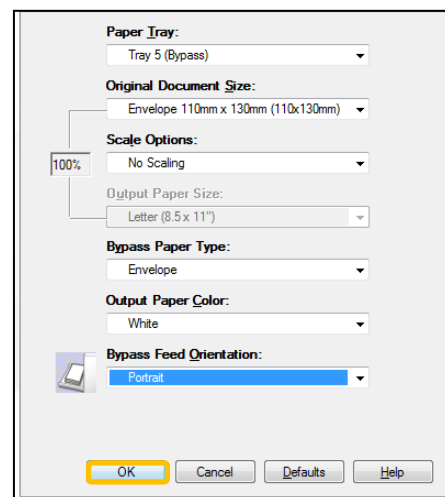
2. Select [Landscape].

2. 選擇 [橫向]。



3. Select [OK].

3. 選擇 [確認]。



Customer Support Center

2513-2513

This document includes Fuji Xerox product(s), licensed from Xerox Corporation. The distributor of the product(s) is FUJIFILM Business Innovation Corp.
Xerox, Xerox and Design, as well as Fuji Xerox and Design are registered trademarks or trademarks of Xerox Corporation in Japan and/or other countries.
FUJIFILM and FUJIFILM logo are registered trademarks or trademarks of FUJIFILM Corporation.
ApeosPort and DocuWorks are registered trademarks or trademarks of FUJIFILM Business Innovation Corp.