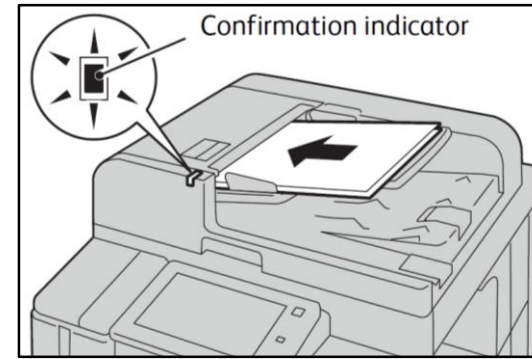


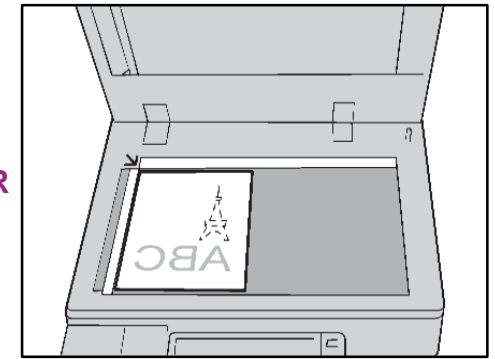


**No. and Component**

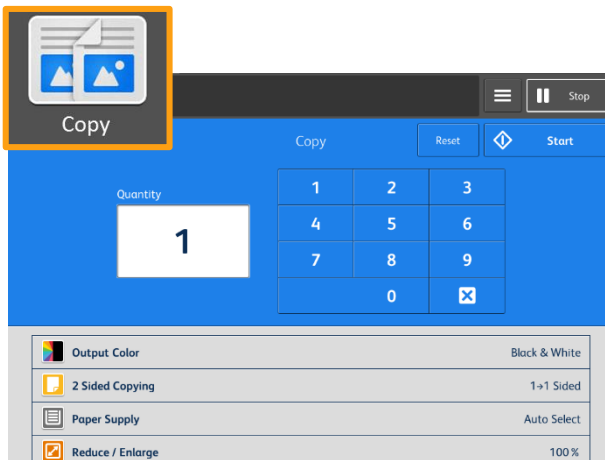
- 1 <Interrupt> button
- 2 <Stop> button
- 3 <Power Saver> button
- 4 <Services Home> button
- 5 <Job Status> button
- 6 <Reset> button
- 7 <Start> button



OR



**Copy**

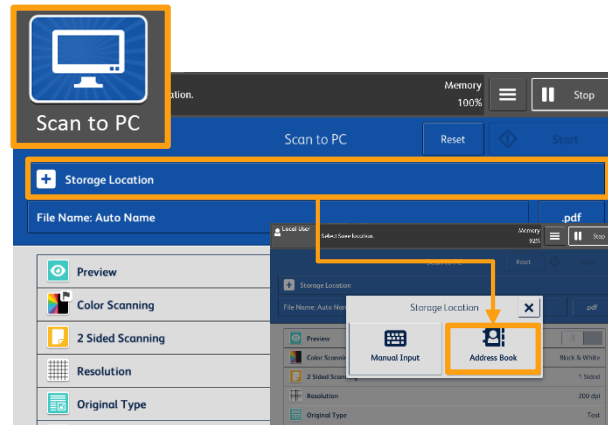


At **[Copy]** menu, select copy features, then press **[Start]**.

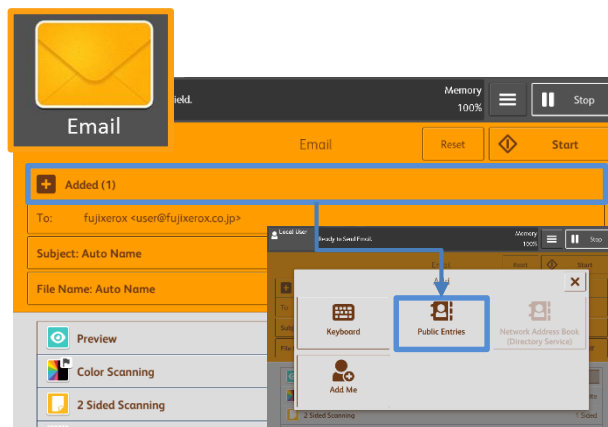


Select **[Display Other Features]** to find more copy features.

**Scan**



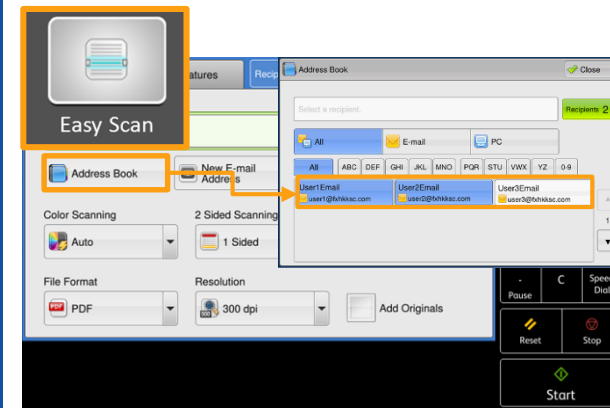
Select **[Storage Location]** to store the data in. Click **[Close]**, then select scan features and press **[Start]**.



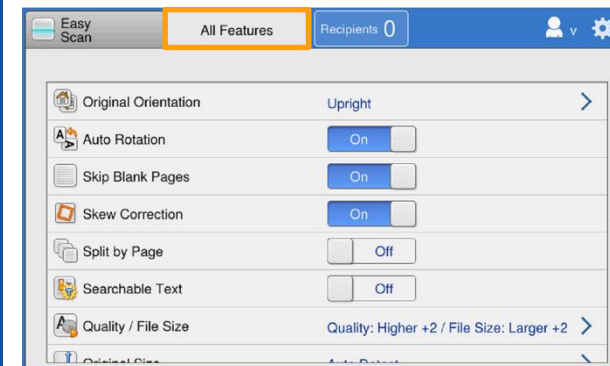
Select recipient from the **[Add]** list. Click **[Close]**, then select scan features and press **[Start]**.

**Easy Scan**

Easy Scan can skip the blank pages and rotate the pages into correct orientation automatically.

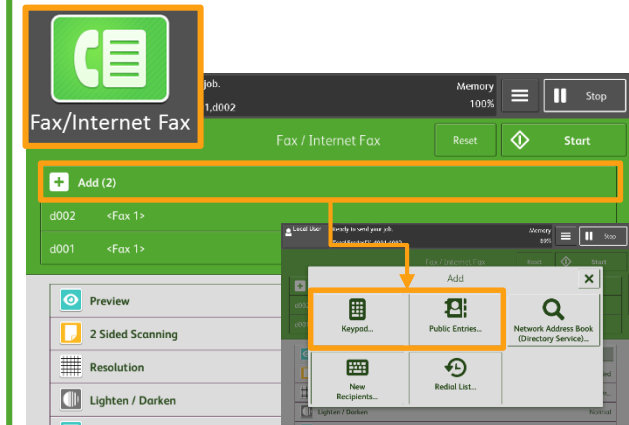


Select recipient from the **[Address Book]** list. Click **[Close]**, then press **[Start]**.



Select **[All Features]** to find more scan features.

**Fax**



Select recipient from the **[Add]** list. Click **[Close]**, then select fax features and press **[Start]**.



After fax transmission, select **[Job Status]**, and then select **[Completed Jobs - All Jobs]** to verify the job completion status.