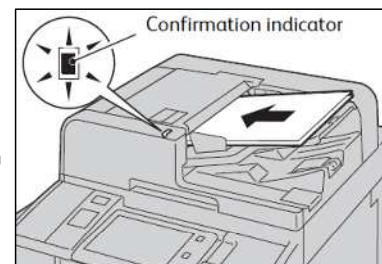
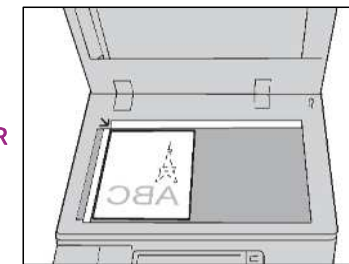




- No. and Component**
- 1 <Interrupt> button
  - 2 <Stop> button
  - 3 <Power Saver> button
  - 4 <Services Home> button
  - 5 <Job Status> button
  - 6 <Reset> button
  - 7 <Start> button

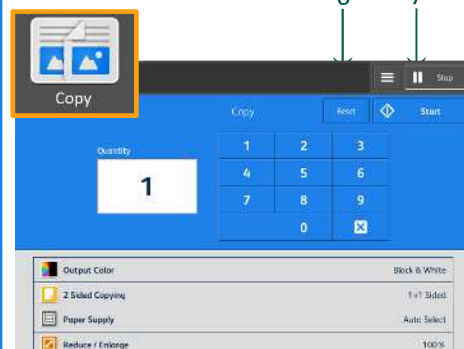


OR



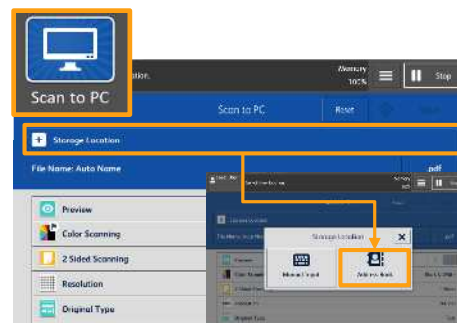
For assistance, please call 2513 2513.

## Copy

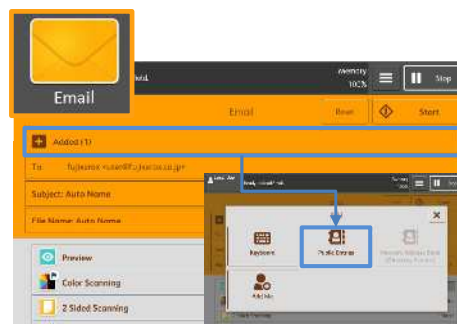


At [Copy] menu, select copy features, then press [Start].

## Scan



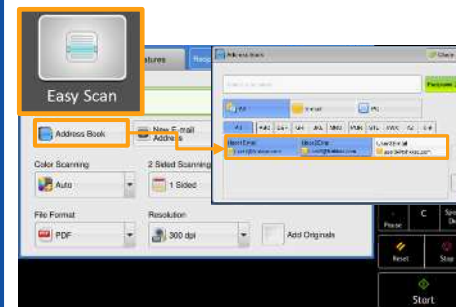
Select [Storage Location] to store the data in. Click [Close], then select scan features and press [Start].



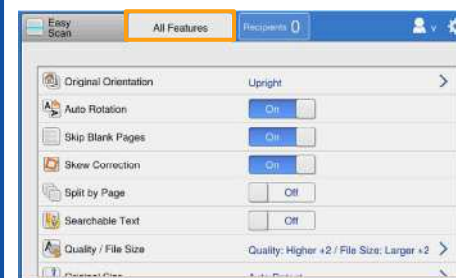
Select recipient from the [Add] list. Click [Close], then select scan features and press [Start].

## Easy Scan

Easy Scan can skip the blank pages and rotate the pages into correct orientation automatically.

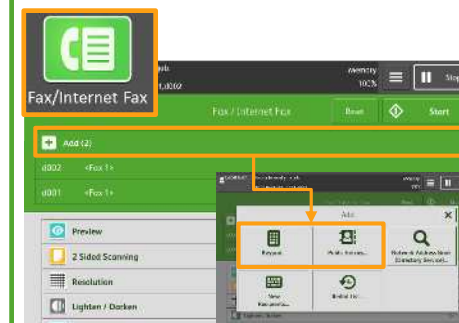


Select recipient from the [Address Book] list. Click [Close], then press [Start].

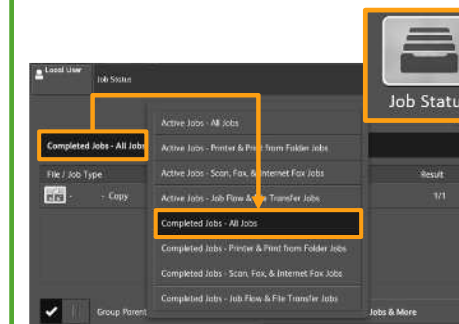


Select [All Features] to find more scan features.

## Fax



Select recipient from the [Add] list. Click [Close], then select fax features and press [Start].



After fax transmission, select [Job Status], and then select [Completed Jobs - All Jobs] to verify the job completion status.

Scan QR Code for more instruction.



Visit below website for more online support.  
<https://support-fb.fujifilm.com>