

ApeosPrint 4560 S / 3960 S / 3360 S

A3 Monochrome Printer

Compact and reliable for your business needs





New Times, New Apeos

The new "Apeos" offers advanced features with high security level and easy operability to help business diversify with times.

"Apeos" devices are able to connect smoothly with a variety of solutions and services to realise an all new agile remote workstyle of working anytime, anywhere.



Image shows ApeosPrint 4560 S

-  A3 Mono
45 / 39 / 33 ppm (A4 LEF)
-  USB, Ethernet, Wi-Fi* connectivity
- *Optional

High performance smallest size printer in its class*1

*1: Machine volume of ApeosPrint 3960 S / 3360 S in A3 laser Monochrome printer. As of October 2022 according to our research.

Compact and durable

- The light-weight machines are capable of printing high volume of up to 1,800,000* pages
- Equipped with an engine that offers high performance and durability



ApeosPrint 3960 S / 3360 S

18.6 Kg



Up to 2 tray configuration can be placed on your desktop with its optimal height

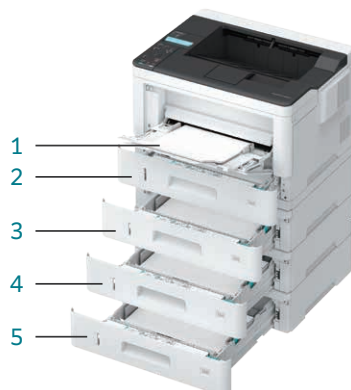
* The machine life on ApeosPrint 4560 S / 3960 S. On ApeosPrint 3360 S, the machine life is 1,200,000 pages. When printing the same document (A4) continuously and periodic replacement parts are properly replaced.

Maximum capacity of up to 2,300 sheets* to meet bulk printing requirements

1. Bypass Tray (100 Sheets)
2. Standard Tray (550 Sheets*)
3. 550 Sheet Feeder (optional)
4. 550 Sheet Feeder (optional)
5. 550 Sheet Feeder (optional)

Note: Paper feeding capacity is based on 80 gsm paper.

* On ApeosPrint 4560 S. Standard Tray capacity for ApeosPrint 3960 S / 3360 S is 250 sheets and enables a maximum paper feeding capacity of 2,000 sheets.



Speedily usable

- Top class speed output of 45/39/33 ppm (A4 LEF) for greater work efficiency to meet bulk printing requirements
- Fast first print output time of 6.0 seconds or less* for ApeosPrint 4560 S / 3960 S, and 7.5 seconds or less* for ApeosPrint 3360 S to reduce waiting time

* Time between the start of the print operation and the ejection of the first sheet of paper

High printing quality

- Print resolution up to 1,200 x 1,200 dpi is achieved with LED printhead
- Diagonal lines are beautifully reproduced by image enhancement processing technology

In-house promotional materials creation

- Supports a wide range of paper, envelopes and cards of various sizes and thicknesses (60 to 220 gsm).
- Supports thin, standard paper through to recycled or heavier paper on the standard tray, optional 250 / 550 Sheet Feeder and Face Up Tray*

Note: It is recommended that users verify in advance if the machine can handle certain items that use special paper stock such as preprinted documents, shipping slips and open style postcards.

* Optional. Enables stable printing on special paper stock with straight paper path.



Supports wireless LAN environment*

- Easy network connection among workgroups with Wi-Fi support*
- Up to five devices can be connected through Wi-Fi Direct* at the same time
- Supports direct mobile printing using Print Utility, AirPrint and Mopria® Print Service
- Wired LAN environments and wireless LAN environments* can be utilized simultaneously

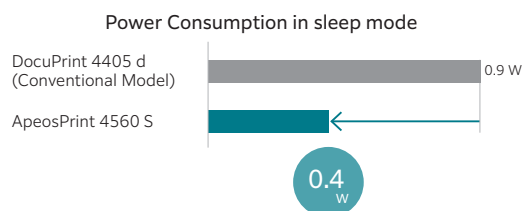
* Optional



Towards a sustainable society

Reducing energy consumption

- Industry leading low energy consumption level
- Power consumption in sleep mode at 0.4 W

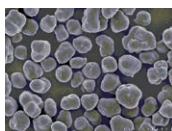


LED printhead

- Self-scanning light emitting device achieves high resolution output
- Consistent light volume realizes compactness and power saving capabilities

Super EA-Eco Toner

- Industry top class small particle size
- Fusing achieved at a low temperature contributes to low power consumption



Whisper- quiet operation

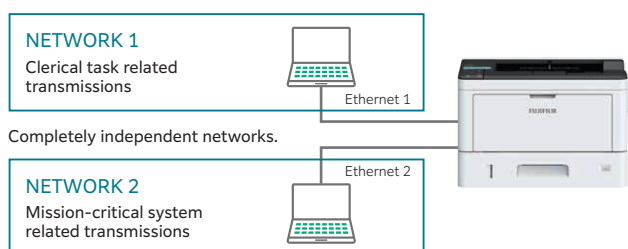
- The fan operation and paper path design is optimized to realize low noise level

High security to prevent information leak and unauthorised access

Dual network capability*

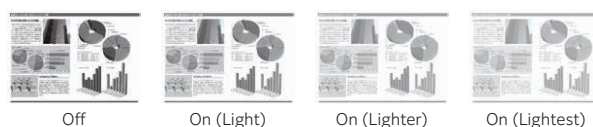
- Allows linking the printer to two ethernet networks simultaneously
- Printing can be done from either one of two completely independent networks
- Multiple users can use the same printer but networks are kept separate

* Optional Secondary Ethernet Kit is required.

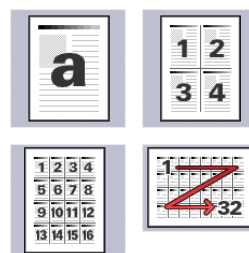


Reducing wastage

- Toner saver function in increments of 3 stages
- Save toner consumption for documents that do not require high image quality such as internal documents



- 2-sided print can set to default during printer driver installation
- For multiple sets printing, "Sample Print" function allows printing one set for review to prevent high volume of misprints
- With "Pages Per Sheet (N-UP)" printing function, up to 32 pages can be composed onto a single page to reduce paper waste



Selectable from [2] [4] [8] [9] [16] or [32]

Safeguard important information

- Secure Print and Private Charge Print with IC card authentication* prevents paper information leakage
- With Image Log*, job logs and the image itself can be stored and managed, enabling prompt investigation upon information leakage
- Supports WPA3 as latest wireless LAN security protocol
- Adopts TPM (Trusted Platform Module) 2.0, as a security chip that conforms to the latest standards with enhanced encryption
- Detects tampering of device software and self-repairing feature protects and repairs device software against tampering events

* Optional

ApeosPrint 4560 S / 3960 S / 3360 S Functions & Specifications

Items	Description		
	4560 S	3960 S	3360 S
Printing Method	LED electrophotography		
Warm-up Time*1	19 seconds or less if the main power is on (23 degrees Celsius room temperature). 16 seconds or less from Sleep mode.		
Continuous Print Speed*2	Simplex	A4 LEF: 45 ppm A3: 25.7 ppm	A4 LEF: 39 ppm A3: 23 ppm
	Duplex	A4 LEF: 31.7 ppm A3: 15.4 ppm	A4 LEF: 22.4 ppm A3: 10.8 ppm
First Print Output Time*3	A4 LEF: 6.0 seconds		A4 LEF: 7.5 seconds
Printing Resolution	Standard [PCL Driver] Standard: 600 x 600 dpi, High Resolution: 1,200 x 1,200 dpi [Adobe® PostScript® 3™ Driver] Standard: 600 x 600 dpi, High Resolution: 1,200 x 1,200 dpi		
Paper Size*4	Standard Tray	A3, JIS B4, A4, JIS B5, A5, JIS B6, A6, Legal, Letter, 11 x 17", 7.25 x 10.5" (184 x 267 mm), 8.5 x 13" (216 x 330 mm), Postcard (100 x 148 mm), C5 Custom Size (Width: 75 to 297 mm, Length: 148 to 432 mm)	
	Bypass Tray	A3, JIS B4, A4, JIS B5, A5, JIS B6, A6, Legal, Letter, 11 x 17", 5.5 x 8.5" (140 x 216 mm), 7.25 x 10.5" (184 x 267 mm), 8.5 x 13" (216 x 330 mm), Postcard (100 x 148 mm), COM-10, Monarch, DL, C5 Custom Size (Width: 70 to 297 mm, Length: 98 to 508 mm, Width 210 x Length 900 mm, Width 297 x Length 900 mm, Width 297 x Length 1,200 mm)	
	Optional Tray	250 Sheet Feeder / 550 Sheet Feeder: A3, JIS B4, A4, JIS B5, A5, JIS B6, A6, Legal, Letter, 11 x 17", 7.25 x 10.5" (184 x 267 mm), C5 Custom Size (Width: 75 to 297 mm, Length: 148 to 432 mm)	
	2 sided Printing	A3, JIS B4, A4, JIS B5, A5, JIS B6, A6, Legal, Letter, 11 x 17", 7.25 x 10.5" (184 x 267 mm), 8.5 x 13" (216 x 330 mm) Custom Size (Width: 100 to 297 mm, Length: 148 to 432 mm)	
Paper Weight*4	Standard Tray	60 to 220 gsm	
	Bypass Tray	60 to 220 gsm	
	Optional Tray	250 Sheet Feeder: 60 to 220 gsm 550 Sheet Feeder: 60 to 220 gsm	
	2 sided Printing	60 to 163 gsm	
Paper Tray Capacity*5	Standard	Standard Tray: 550 sheets Bypass Tray: 100 sheets	Standard Tray: 250 sheets Bypass Tray: 100 sheets
	Optional	250 Sheet Feeder: 250 sheets 550 Sheet Feeder: 550 sheets	
	Max	2,300 sheets [Standard + 550 Sheet Feeder x 3]	2,000 sheets [Standard + 550 Sheet Feeder x 3]
Output Tray Capacity*5	Standard	550 sheets (face down)	250 sheets (face down)
	Optional	Face Up Tray: 100 sheets	
CPU	ARM Dual Core 1.3 GHz		
Memory Capacity	2 GB (Max: 2 GB)		
Storage device capacity*6	Optional: 82 GB		
Page Description Language	Standard PCL6, Adobe® PostScript® 3™		
Supported Operating System*7	Standard [PCL Driver] Windows 11 (64 bit), Windows 10 (32 bit / 64 bit), Windows 8.1 (32 bit / 64 bit), Windows Server 2022 (64 bit), Windows Server 2019 (64 bit), Windows Server 2016 (64 bit), Windows Server 2012 R2 (64 bit), Windows Server 2012 (64 bit) [Mac OS X Driver] macOS 12 / 11 / 10.15 / 10.14 / 10.13 [Adobe® PostScript® 3™ Driver] Windows 11 (64 bit), Windows 10 (32 bit / 64 bit), Windows 8.1 (32 bit / 64 bit), Windows Server 2022 (64 bit), Windows Server 2019 (64 bit), Windows Server 2016 (64 bit), Windows Server 2012 R2 (64 bit), Windows Server 2012 (64 bit) macOS 12 / 11 / 10.15 / 10.14 / 10.13		

Notes:

- To comply with paper weight specifications, it is recommended to use our recommended paper. Document may not be printed correctly depending on usage conditions.
- Functional spare parts will be available for at least 7 years after the product is no longer manufactured.

Interface	Standard	Ethernet 1000BASE-T / 100BASE-TX / 10BASE-T, USB3.0		
	Optional	Ethernet 1000BASE-T / 100BASE-TX / 10BASE-T, IEEE 802.11a/b/g/n/ac		
Network Protocol	TCP/IP (IPv4/IPv6, Ipd, Port9100, IPP, ThinPrint, WSD)			
Power Supply *8	AC220-240 V +/- 10 %, 10 A, 50/60 Hz common			
Operating Noise*9	In operation	7.17 B, 54 dB (A) ¹⁰	7.09 B, 54 dB (A) ¹⁰	7.00 B, 51 dB (A)
Maximum Power Consumption*11	Max	1,350 W (AC220 V +/- 10 %) 1,530 W (AC240 V +/- 10 %)	910 W (AC220 V +/- 10 %) 1,030 W (AC240 V +/- 10 %)	
	Average	Ready mode: 70 W In operation: 615 W Sleep mode: 0.4 W ¹²	Ready mode: 60 W In operation: 473 W Sleep mode: 0.4 W ¹²	
Dimensions	W 499.4 x D 388.0 ¹³ x H 320.0 mm	W 499.4 x D 388.0 ¹³ x H 262.6 mm		
Weight	20.2 kg (Including consumables)		18.6 kg (Including consumables)	
	18.2 kg (Excluding consumables)		16.6 kg (Excluding consumables)	

Note: WSD stands for Web Services on Devices.

*1: Measurements based on our standards. It takes more time depending on the usage conditions and image quality control.

*2: When Continuously Printing Original (Plain). The performance may be reduced depending on the paper type and the paper size. The speed may be reduced due to the image quality adjustment.

*3: When feeding from feeder tray of machine. Numeric value varies depending on output environment.

*4: Please use the recommended paper. Depending on paper type (quality, size, etc.), printing may be inaccurate. Please conduct paper feed checks in advance, especially when using custom paper sizes. Do not use inkjet paper. Printing errors or reduction in quality may occur when printing on the back of used paper or paper already used for printing, or when using the printer in a dry, cold, or hot and humid environment.

*5: 80 gsm paper.

*6: The actual value of storage device capacity may vary.

*7: Please refer to our official website for the latest supported OS.

*8: Power outlets that provide the above power level is recommended. Maximum machine measured current: 12 A for ApeosPrint 4560 S / 3960 S, and 10 A for ApeosPrint 3360 S.

*9: Measured in accordance to ISO7779. Unit B: Sound Power Level LWAd, Unit dB: Radiated Sound Pressure Level LpAm (bystander position). Main unit only.

*10: 51 dB (A) in quiet mode.

*11: Maximum power consumption at full configuration.

*12: At standard configuration.

*13: When using A4 size. When using A3 size, it is 517.8 mm.

Consumables

Product Name	Product Code	Yield
Drum Cartridge	CT351379	Up to 40,000 pages*1
Toner Cartridge Standard Capacity	CT203918	Up to 10,000 pages*2
Toner Cartridge High Capacity	CT203919	Up to 15,000 pages*2

*1: The number of printable pages is a reference value derived from the average of 4 sheets for ApeosPrint 4560 S (3 sheets for ApeosPrint 3960 S, 2 sheets for ApeosPrint 3360 S) printed in A4 LEF, image coverage 5% in one setting, under continuous printing usage conditions. The actual number of printable pages may vary to below half the reference value, depending on paper type, paper direction, input / output tray settings, initialization operations upon powering ON / OFF the device, tuning operations to maintain print quality, and other such usage environment conditions.

*2: Published value based on ISO / IEC 19752 standards. The actual number of printable pages may vary significantly from the published value, depending on printing content, paper size, paper type, usage conditions, initialization operations upon powering ON / OFF the device, tuning operations to maintain print quality, and other such usage environment conditions.

Options

Product Name	Product Code
250 Sheet Feeder	E3100083
550 Sheet Feeder	E3100084
Face Up Tray	E3300227
Data Overwrite Kit	EC104786
Feature Enhance Kit	E3100086
Storage (SSD)	EC104530
Secondary Ethernet Kit	EC104896
Wireless LAN Kit 2	EC104218
External IC Card Reader B	EC104665
Multi Language Font Kit	EC104208
Remote Authentication Kit	E3100097
Software / Product Manual	E3100087

fujifilm.com/fbmm

FUJIFILM

FUJIFILM Business Innovation Asia Pacific Pte. Ltd. (Myanmar Branch)

#1201 -1205, 12th Floor of Sakura Tower, 339 Bogyoke Aung San Road, Kyauktada Township, Yangon, Myanmar

Tel: (+95) 1 825-5374 Fax: (+95) 1 825-5396

The available model varies depending on the country/region. Please ask the sales representatives for details.

The product specifications, appearance and other details in this brochure are subject to change without notice for improvements.

Reproduction Prohibitions Please note that reproduction of the following is prohibited by law: •Domestic and foreign currencies, government-issued securities, and national bonds and local bond certificates. •Unused postage stamps, post cards, etc. •Certificate stamps stipulated by law. •Reproducing works forming the subject matter of copyright (literary works, musical works, paintings, engravings, maps, cinematographic works, drawings, photographic works, etc.) is not permitted unless the reproduction is for the purpose of personal use, family use or other similar uses within a limited circle.

Trademarks •FUJIFILM and FUJIFILM logo are registered trademarks or trademarks of FUJIFILM Corporation. •ApeosPrint is registered trademarks or trademarks of FUJIFILM Business Innovation Corp. •Adobe, Adobe logo, PostScript and PostScript logo are either registered trademarks or trademarks of Adobe in the United States and/or other countries. •Mopria the Mopria Logo, and the Mopria Alliance word mark and logo are registered and/or unregistered trademarks and service marks of Mopria Alliance, Inc. in the United States and other countries. •Apple, AirPrint and Mac are trademarks of Apple Inc. registered in the U.S. and other countries and regions. •All product names and company names mentioned in this brochure are trademarks or registered trademarks of their respective companies.



For Your Safety

Before using the product, read the instruction Manual carefully for proper use. Use the product with the power source and voltage specified. Be sure to establish ground connection. Otherwise, electronic shock may result in the case of a failure or short circuit.