

# Newline Q+ Series

A powerful all-rounder for seamless, next-generation communication.



# Newline Q+ Series

## Engagement without limitations

Welcome to uncluttered. Welcome to efficiency. Welcome to your new collaboration all-rounder.

The Newline Q+ incorporates two-way broadcast communication using an open platform, with an inbuilt camera, microphone array, speakers, PC, and touchscreen 'whiteboard' capabilities - with only one cable required.

With compelling graphic and interactive abilities, full sharing and control capabilities, and safety features like blue light filters, optical bonding, and microbial certification - the Newline Q+ is a **powerful all-rounder for seamless, next-generation communication.**



1080P built in camera



8m pick-up range microphone built in



2 x 20W speaker + 1 x 15W sub woofer



Available in 65", 75" and 86"



Wireless casting



Android 11 OS and WIFI 6 certified



Blue light filter



4K resolution and 178° viewing angle



TÜV-certified antimicrobial display coating



Compatible with Zoom, Teams, Google, and Webex

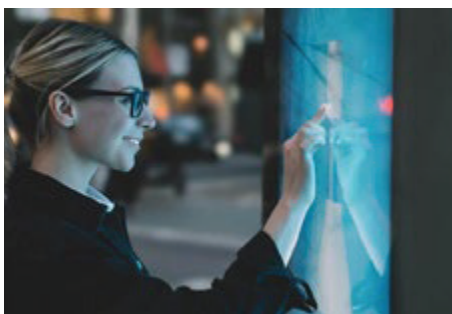


Intelligent IR touch technology

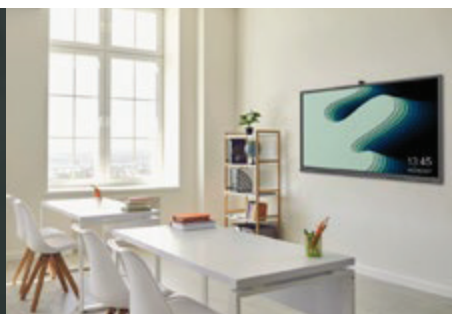


Optical bonding technology

With a wide choice of sizes and plug 'n play versatility – choose the model to best suit your needs



Boardroom



Meeting room

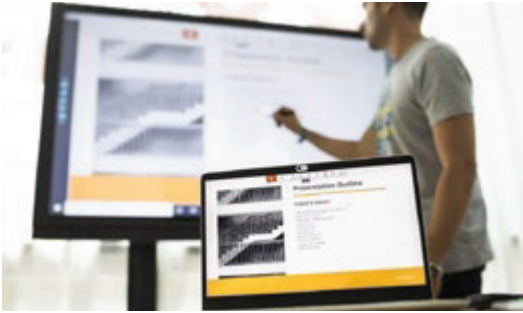


Classroom

Signage

Examination room

Simply a powerful all-rounder collaborative device.



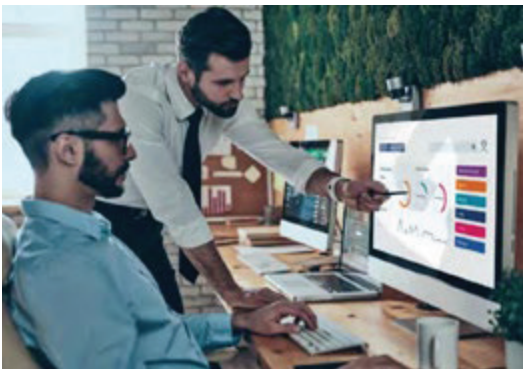
### The power of all-in-one.

Simplify and streamline by consolidating traditional communication devices into an all-in-one setup. Say goodbye to projectors, microphones, cameras, interactive whiteboards, PC's, speakers, trailing cables, and technical interruptions. The Newline Q+ can also be mobile or fixed in place, thanks to wireless connectivity.



### Health and safety comes first.

Newline Q+ has a TÜV-certified antimicrobial coating, a physical blue-light filter, and optical bonding. This means your display is light but sturdy, safer than non-bonded touchscreens, with improved viewing angles and touch accuracy.



### Collaboration made easy.

Take charge with simple, intuitive controls – no need to have a technical expert in the room, with wireless plug 'n' play versatility. You can change presenters at will, make changes using the interactive touch screen, and see and hear everyone in the meeting with wide-view 4K clarity and powerful 2-way sound quality.



### Keep your information safe and feel supported.

The Newline Q+ has multiple security defences and settings like a USB lock, profile passkey, meeting data administrative protection, plus Android 11 OS and WIFI 6 certification. With easy web-based device management and the FUJIFILM Business Innovation Australia customer service advantage – be assured that support is available wherever you are, should you need it.



### Almost limitless capabilities.

Compatible with Zoom, Teams, Google, Webex, and more. You can also access a broad range of apps with Android connectivity to encourage engagement and problem-solving for any audience.

## Product Specifications

### Newline Q+ Series

Series	Q+ Series		
Model	TT-6522Q	TT-7522Q	TT-8622Q
Active Screen Size	65"	75"	86"
Display Ratio	16:9	16:9	16:9
Resolution	3840 x 2160 (4K)	3840 x 2160 (4K)	3840 x 2160 (4K)
Center brightness	400 cd/m <sup>2</sup>	400 cd/m <sup>2</sup>	400 cd/m <sup>2</sup>
Response Time	Typ. 8ms, Max. 10ms	Typ. 8ms, Max. 10ms	Typ. 8ms, Max. 10ms
Viewing Angle	H = 178, V = 178 typ.	H = 178, V = 178 typ.	H = 178, V = 178 typ.
Display Life Time (MTBF)	≥50000 hours	≥50000 hours	≥50000 hours
<b>Power</b>			
Working Voltage	AC100-240V Max 5.7A	AC100-240V Max 6.5A	AC100-240V Max 6.7A
Power Consumption (Eco mode)	<150W	<240W	<270W
Power Consumption (full load)	<=570W	<=650W	<=670W
Power Consumption (Standby mode)	<0.5W	<0.5W	<0.5W
<b>Touch Technology</b>			
Touch Solution	IR	IR	IR
Glass Surface Technology	Anti-Glare, Anti-Fingerprint, Antimicrobial Tempered Glass	Anti-Glare+Anti-Fingerprint, +Antimicrobial Tempered Glass	Anti-Glare+Anti-Fingerprint, +Antimicrobial Tempered Glass
Touch Points	20 Point	20 Point	20 Point
Gap in Glass and OC	Optical Bonding (Gap: 1mm)	Optical Bonding (Gap: 1mm)	Optical Bonding (Gap: 1mm)
Touch Screen Writing Tools	Stylus or Finger	Stylus or Finger	Stylus or Finger
<b>Sound</b>			
Speaker Position	bottom front	bottom front	bottom front
Speaker Max. Power Output	20Wx2	20Wx2	20Wx2
Woofers Position	back center	back center	back center
Woofers Max. Power Output	15Wx1	15Wx1	15Wx1
<b>Microphone</b>			
Mic Position	8-mic array - upper front	8-mic array - upper front	8-mic array - upper front
Distance	8m	8m	8m
<b>Camera Module</b>			
Camera Resolution	4K@ 30 Hz /UHD	4K@ 30 Hz /UHD	4K@ 30 Hz /UHD
Field of View	120° FOV Lenses	120° FOV Lenses	120° FOV Lenses
RGB Camera	3840 x 2160/30fps	3840 x 2160/30fps	3840 x 2160/30fps
Camera Tilt Range	15°	15°	15°
<b>Wifi Module</b>			
Parameters	wifi 6 +BT 5.2	wifi 6 +BT 5.2	wifi 6 +BT 5.2
<b>Transportation / Storage</b>			
Storage Temperature/Humidity	-20~60°C, 0~90%RH (non-condensing)	-20~60°C, 0~90%RH (non-condensing)	-20~60°C, 0~90%RH (non-condensing)
Working Temperature/Humidity	0~40°C, 20~80%RH (non-condensing)	0~40°C, 20~80%RH (non-condensing)	0~40°C, 20~80%RH (non-condensing)
Installation Method (optional)	wall-mounted / mobile stand	wall-mounted / mobile stand	wall-mounted / mobile stand
Outline Dimension (without wall mount bracket thickness)	1513 x 926 x 116 mm	1735 x 1050 x 116 mm	1981 x 1190 x 116 mm
Packing Dimension	1640 x 207 x 1036 mm	1859 x 227 x 1160 mm	2119 x 250 x 1290 mm
Net Weight	39 kg	50 kg	65 kg
Gross Weight	49 kg	64 kg	82.5 kg
<b>Smart System</b>			
SoC Chipset	Amlogic 311D2	Amlogic 311D2	Amlogic 311D2
RAM	8GB	8GB	8GB
Flash Memory	64GB	64GB	64GB
Extra Memory (Built in)	64GB (SD Card)	64GB (SD Card)	64GB (SD Card)
Android Version	Android 11	Android 11	Android 11
Multimedia File Formats Support	Image: JPEG, BMP, PNG Video: MPEG1, MPEG2, MPEG4, SorensonH.263,H.263,H.264,HEVC/H.265,MVC,AVS,AVS+,WMV3,VC1, Motion JPEG,VP8,VP9,RV30/RV40 Audio: MPEG1/2 @LAYER1;@LAYER2;@LAYER3,EAC3,ACC-LC,HEAAC,VORBIS,LPCM,IMA-ADPCM,MS-ADPCM,G711 A/MU-LAW,LBR(COOK),FLAC		
Proximity Sensor	2	2	2
<b>Connectivity</b>			
USB Data Ports	1 x USB Type-C (PD 100W), 1 x USB 3.0 Type-C (No PD), 4 x USB Type-B (Touch), 3 x USB 3.0 Type-A, 1 x USB 3.0 Type-A to Android		
Digital Audio-Video Inputs	3 x HDMI In 2.0, 1 x DisplayPort 1.2, 1 x Microphone In		
Digital Audio-Video Outputs	1 x HDMI Out 2.0, 1 x Audio Line Out, 1 x S/PDIF		
Integrated PC Slot	1 x OPS-PC Slot, 1 x SDM-S Slot		
Control Input	1 x RS-232		
Network	1 x In & 1 x Out RJ-45 Connector		
Proximity Sensor	2		
Wi-Fi Module Slot	1		

fujifilm.com/fbmy

# FUJIFILM

FUJIFILM Business Innovation Asia Pacific Pte. Ltd.

Reg. No. 199202000004 (993478-A) ST No. W10-1808-32000018

#### Head Office:

Ground Floor, Axis Business Park, Block C, No. 10 Jalan Bersatu 13/4, 46200 Petaling Jaya, Selangor, Malaysia.  
Tel: 03-7882 2888 Fax: 03-7882 2828 Customer Service Hotline: 1300-88-1163

#### Branches:

Penang: No. 3-G, 3-1 & 3-2, Persiaran Bayan Indah, Bayan Bay, 11900 Bayan Lepas Penang.  
Tel: 04-643 5000 Fax: 04-644 4677

Johor Bahru: No.21 & 23, Jalan Setia Tropika 1/28, Taman Setia Tropika, 81200 Kempas, Johor Bahru.  
Tel: 07-238 7868 Fax:07-238-2678

Melaka: No.17, Jalan KL3/11, Kota Laksamana, 75200 Melaka.  
Tel: 06-281 0466 Fax: 06-281 0408

Kota Kinabalu: Block K, Lot 65, Ground Floor, KK Time Square, 88100 Kota Kinabalu, Sabah.  
Tel: 088-486 888 Fax: 088-486 668

Kuching: No. 201, Lot 3050, Eastmoore Centre, 2 1/2 Mile Jalan Rock, 93200 Kuching, Sarawak.  
Tel: 082-240 633 Fax: 082-418 733

FUJIFILM and FUJIFILM logo are registered trademarks or trademarks of FUJIFILM Corporation.