

Jet Press 1160CF

High-speed Continuous Feed Inkjet Printing System



Printing with a high level of productivity and quality

The highest printing density in the industry (in 160 m/min continuous paper inkjet printer class)

High Performance

Full-colour printing at 160 m/min*1

The printer can print in full colour at a maximum speed of 160 m/min, which is equivalent to 2,096 pages per minute on precut A4 paper*2.

Mass batch prints of tens of thousands of pages may be created at high speeds through the use of the unwinder and rewinder*3.

This ensures great productivity and stable processing for high-volume/short-duration print jobs such as trans-promo materials and invoices.

*1: Speed priority mode (1,200x600 dpi)

*2: Two-sided printing with dual layout of A4 pages

*3: Optional

High Quality

Pigment Inks with High Concentrations

Superior image quality printing is achieved through the newly designed high-concentration pigment ink.

High-quality, high-definition prints up to 1,200 x 1,200 dpi

Printer can produce output image with great resolution:

- 1,200 x 600 dpi (with a print speed of 160 m/min)

- 1,200 x 1,200 dpi (with a print speed of 80 m/min)

It prints characters and numbers clearly.

Fast Data Processing

Print server featuring Fujifilm Business Innovation's unique technology provides high quality output and rapid processing.

- Faster On-the-fly*1 printing
- High quality image data processing 1,200x1,200 dpi, 8 bit
- Supporting APPE*2 perfect for PDF output
- High-precision CMYK profiles
- High-speed, large volume printing of variable data (Mercury RIP, Industry standard PPML, PDF/VT-1, PDF/VT-2)
- Increased fault tolerance due to OS HDD redundancy
- Uninterruptible power supply (UPS)*3

*1 Requires direct printing without creating raster data in advance.

*2 Adobe® PDF Print Engine

*3 A product sold by Fujitsu. Two units are required.



Inside Structure

1 Print Head Box

The print head supports 1,200 x 1,200 dpi printing.

A single dot can be expressed with up to three gradations, allowing for smoother density transitions.

2 Dryer

Two types of drying technology is utilised: heat drum and heat air dryers.

3 Unwinder

It can be configured to feed paper with roll positioned for top or bottom feeding.

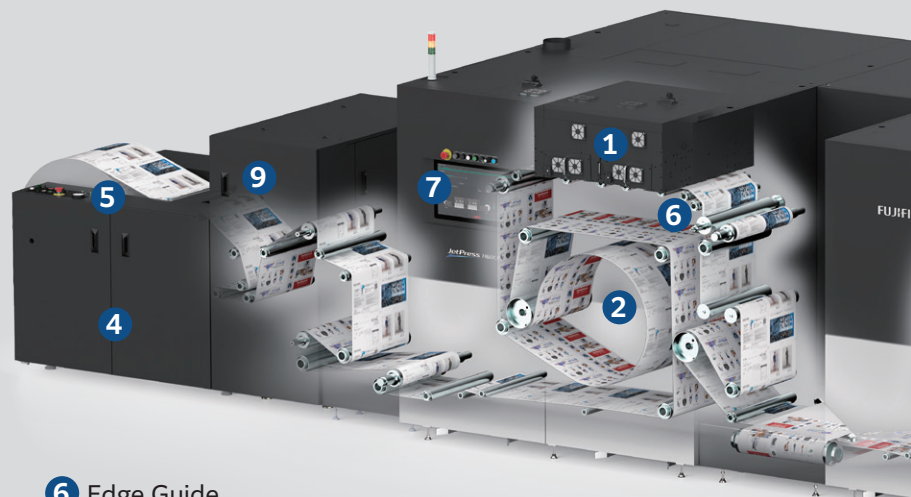
Raising and lowering heavy paper rolls is performed through a simple mechanism. Paper alignment can be applied rapidly through a simple interface.

4 Rewinder (Optional)

The machine can wind paper either upwards or downwards. A touch roller is added to prevent wrinkling when rewinding.

5 Tension Controller

It assures that paper tension remains constant, helping to stabilise paper feed during high-speed printing.

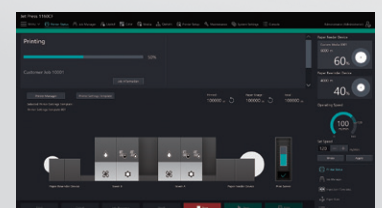


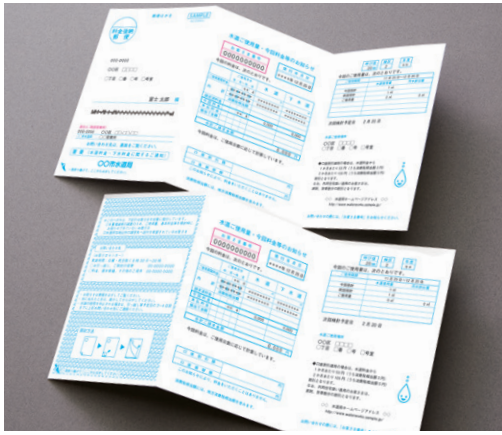
6 Edge Guide

Paper movement, positioning, monitoring allows for adjustment to remove any misalignment of the paper path which allows for a smooth printing process.

7 Operation Panel

Machine operation is via a simple touch screen interface.





COMPANY NAME LTD.
 株式会社 株式会社

INVOICE

Invoice TO: John Constantine

Invoice No: 00000000000000000000
 Date: 2023/10/01
 Total Due: \$1552.95

NO.	DESCRIPTION	UNIT	QUANTITY	PRICE	TOTAL
1	Peribus #Equatus slot #Korabus	Peribus	18	200.00	360.00
2	Peribus #Equatus slot #Korabus	Peribus	20	15.00	300.00
3	Peribus #Equatus slot #Korabus	Peribus	3	28.50	85.50
4	Peribus #Equatus slot #Korabus	Peribus	20	15.00	300.00
5	Peribus #Equatus slot #Korabus	Peribus	15	30.50	457.50

SUBTOTAL: 1479.00
 TAX (10.00%): 147.90
TOTAL: 1626.90

DATE: 2023/10/01
 TIME: 10:00:00
 USER: admin

COMPANY SIGNATURE: _____
 CLIENT SIGNATURE: _____

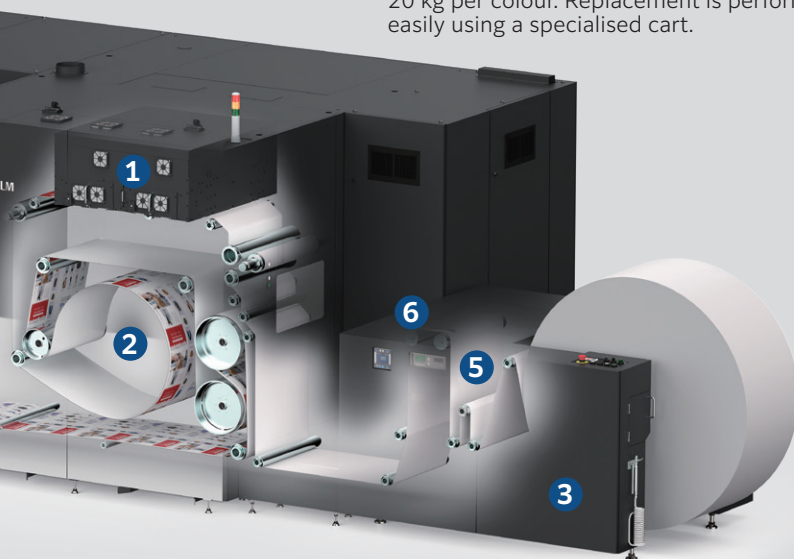
STAFF SHIRT
 STAFF SHIRT

WE LOVE DENIM
 期間：10月1日～10月31日
 ニュースタイル服のデニムを続々と披露！
 期間中は何色でも無償交換可能！
 ぜひご利用ください！



8 Cart Ink Pack

The four-colour ink packs are located on the back of the printer. Ink packs weigh about 20 kg per colour. Replacement is performed easily using a specialised cart.



9 Inspection Box (Optional)

This is the box for inspection unit for example. Different kinds of inspection boxes and units are available depend on countries.
 Note: Contact with our sales representative for details.



10 Chiller

The chiller flows water through the printer to cool the paper.

Slack Web Unit (Optional)

This unit applies tension to roll paper when not using the rewinder. Users can utilise a post-processing device with a loose tension.

Specification of Jet Press 1160CF

Basic Specifications / Print Function

Item	Description
Printer configuration	Twin Engine Duplex
Colour capability	Full Colour
Printing method	Piezoelectric drop-on-demand inkjet method
Printing resolution	Image Quality Priority : 1,200 x 1,200 dpi Speed Priority : 1,200 x 600 dpi
Halftone	3 levels per drop
Warm-up time*1	15 minutes or less (when the room temperature at 23°C)
Continuous print speed	Image Quality Priority : 80 m/minutes (1,048 ppm*2) Speed Priority : 160 m/minutes (2,096 ppm*2)
Paper size*3	Width 152.4 to 520.7 mm
Paper weight*4	64 to 250 gsm
Paper feed	Unwinder connected (maximum roll diameter: 1,270 mm)
Paper discharge	Rewinder*5 connected (maximum roll diameter: 1,270 mm)
Feeding speed	Maximum 160 m/minutes
Operating Noise*6	In operation: 79 dB(A)
Power supply	Three-phase AC200 V +/-10 %, 200 A, 50/60 Hz common (Printer) Three-phase AC400 V +/-5 %, 200 A, 50/60 Hz common (Printer)
Maximum Power consumption	26.3 kW (Three-phase AC200 V), 127.0 kW (Three-phase AC400 V)
Dimensions*7	W8,600 x D2,482 x H1,880 mm (With rewinder) W7,800 x D2,482 x H1,880 mm (With slack web unit. Without rewinder)
Installation space*7	W12,600 x D5,700 mm (With rewinder) W11,820 x D5,700 mm (With slack web unit. Without rewinder)
Weight*7	9,337 kg (With rewinder) 8,887 kg (With slack web unit. Without rewinder)

*1: Start-up inspection time and purge time are excluded. It may take more than 15 minutes depending on the installation environment.

*2: A4 size page x 2 layout and duplex printing. When printing a single document continuously. The continuous print speed may decrease due to conditions such as output data.

*3: A margin of 15 mm on left and right edges of paper is the unprintable area when the Gripper Roller is set on the edge area of the paper.

*4: It is restricted on printing speed with the paper over 157 gsm.

*5: Optional.

*6: Measurement based on the ISO11204 standard.

*7: Unwinder (standard), rewinder (optional), slack web unit and other necessary units are connected. Excludes roll paper (feed/rewind), attention light and chiller. Includes inks.

Print Server [Print Server for the Jet Press 1160CF]

Item	Description
Type	External
CPU	[Center Processor] Intel® Xeon® E-2276G Processor 3.8 GHz [Back End Processor] Intel® Xeon® Gold 6230 Processor 2.1 GHz x 4
Storage device	[Center Processor] HDD: 1 TB x 2 + 2 TB x 1, DVD-ROM drive [Back End Processor] HDD: 1 TB x 6, SSD: 1.6 TB x 2 (Optional 1.6 TB x 12), 800 GB x 8, DVD-ROM drive
Memory capacity	[Center Processor] 32 GB (Max 32 GB) [Back End Processor] 384 GB (Max 384 GB)
Server operation system	[Center Processor] Windows Server IoT 2022 Standard [Back End Processor] Windows Server IoT 2022 Standard
Page description language	Adobe® PostScript® 3™, PDF/VT-1, PDF/VT-2, PPML
Print data format	PS, PDF2.0, PDF/X-1a, PDF/X-3, PDF/X-4, PDF/X-5, EPS, TIFF, JPEG, IPDS*1, AFPDS*1
Interface	Ethernet 1000BASE-T / 100BASE-TX / 10BASE-T
Network protocol	TCP/IP (Ipr, FTP, SMB)
Power supply	[Center Processor] AC100-240V +/-10 %, 5-2.5 A, 50/60 Hz common [Back End Processor] AC200-240 V +/-10 %, 16 A x2, 50/60 Hz common
Maximum power consumption	[Center Processor] 0.25 kW [Back End Processor] 6.4 kW
Dimensions	[Center Processor] W 98 x D 400 x H 340 mm [Back End Processor] W 700 x D 1,050 x H 2,000 mm
Weight	[Center Processor] 11 kg*2 [Back End Processor] 300 kg*3

Note: This Print Server is configured with Center Processor and Back End Processor.

*1: Optional.

*2: Excludes monitor, mouse and keyboard.

*3: Includes console monitor, mouse, keyboard and touch pad.

- To comply with paper weight specifications, it is recommended to use our recommended paper. Document may not be printed correctly depending on usage conditions.
- Functional spare parts will be available for at least 7 years after the product is no longer manufactured.

fujifilm.com/fbph



Adobe PostScript



Adobe PDF Print Engine

FUJIFILM

FUJIFILM Business Innovation Philippines Corp.

25th Floor, SM Aura Tower, 26th St. Corner McKinley Parkway, Taguig City 1630 Philippines
Tel. 632-8878-5200

The available model varies depending on the country/region. Please ask the sales representatives for details.

The product specifications, appearance and other details in this brochure are subject to change without notice for improvements.

Reproduction Prohibitions Please note that reproduction of the following is prohibited by law : •Domestic and foreign currencies, government-issued securities, and national bonds and local bond certificates. •Unused postage stamps, post cards, etc. •Certificate stamps stipulated by law. •Reproducing works forming the subject matter of copyright (literary works, musical works, paintings, engravings, maps, cinematographic works, drawings, photographic works, etc.) is not permitted unless the reproduction is for the purpose of personal use, family use or other similar uses within a limited circle.

Trademarks •FUJIFILM and FUJIFILM logo are registered trademarks or trademarks of FUJIFILM Corporation. •Adobe, Adobe logo, PostScript and PostScript logo, Adobe PDF, Adobe PDF Print Engine are either registered trademarks or trademarks of Adobe in the United States and/or other countries. •All product names and company names mentioned in this brochure are trademarks or registered trademarks of their respective companies.



For Your Safety

Before using the product, read the Instruction Manual carefully for proper use. Use the product with the power source and voltage specified. Be sure to establish ground connection. Otherwise, electronic shock may result in the case of a failure or short circuit.

The information is as of March, 2023. PIC-0217 PH (2209-R2)