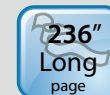
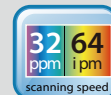
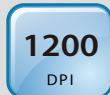




A Compact and Affordable Duplex Scanner



Features:

- AV332 scans 32 ppm/ 64 ipm at (A4, Color, 300 dpi)
- Easy to carry due to the slim design
- Support embossed plastic cards
- Professional bundled software applications include Avision Button Manager V2, AVScan X, PaperPort SE 14
- Earth-friendly LED technology
- Compact ADF holds up to 50 pages
- Press and scan to cloud servers such as Google Drive, FTP, Evernote, and Microsoft SharePoint via Button Manager V2

Overview

The AV332 is a 32 ppm / 64 ipm, duplex sheetfed scanner that is fast, reliable, and affordable for business where scanning plastic ID cards, business cards, documents or other heavy card stock is necessary. With the straight paper path, the scanner supports paper from 27 to 413 g/m² (7 to 110 lb.) in weight and in 8.5 x 14 in. (legal) in size and allow embossed plastic cards such as credit cards, or driver's license up to 1.25 mm thick to be transmitted smoothly.

Innovative Design to Save Your Space

The AV332 boasts a unique and stylish design as both the input and output paper tray can be folded when not in use. The paper tray also helps to protect the unit from dust. Unlike bulky conventional scanners, the slim AV332 can be easily carried and fit on a desk without taking up a lot of space.



High Resolution of 1200 dpi

With a high resolution of 1200 dpi and

advanced image processing technology, you can be assured documents can be converted in the highest image quality. In addition, with the build-in CIS (Contact Image Sensor) module, the AV332 does not require any warm-up time.

Compact and earth-friendly design

The AV332 is compact and earth-friendly in design since it uses CIS (contact image sensor) technology which requires smaller space and the LED lamp as the light source. The LED lamps are lower power consumption and are designed to last for the life of the scanner.

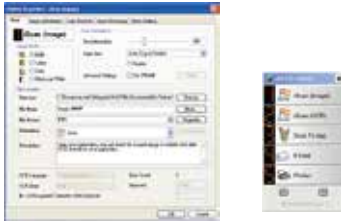
What We Have Bundled

The AV332 comes with TWAIN and ISIS drivers, and are bundled with a suite of powerful software applications that include Avision Button Manager V2, AVScan X and Nuance PaperPort SE 14.

Avision | AV332 Sheetfed Scanner

Avision's Button Manager V2

-Completes your scan with a single step



The Button Manager V2 main screen

Button Manager V2 makes it easy for you to scan and send your image to your favorite destinations with a press one button. Now the new version comes with an innovative feature to let you scan and automatically upload the scanned document to popular cloud repositories such as Google Docs, Microsoft SharePoint, or FTP. In addition, the iScan feature allows you to insert the scanned image or recognized text after optional OCR (Optical Character Recognition) process to your text editor such as Microsoft Word to get your job done easily and quickly.

AVScan X

-The Intelligent Document Management Tool



The AVScan X main screen

Document Imaging is the very first step of Document Management. However, poor quality images can cause serious problems to later indexing or storing processes. It may increase scanning labor costs and lowers the OCR accuracy. AVScan X ensures all documents are checked and polished at the time they are scanned such that the image quality is guaranteed before they are ready to use for other purposes.

AVScan X is an intelligent scanning and electronic filing solution. AVScan X possesses distinct features that convert and index scanned information into electronic documents for easy storage and fast retrieval.

Nuance PaperPort SE14

- The Professional Choice to Organize and Share Your Documents



The PaperPort SE14 main screen

PaperPort SE 14 is Nuance's most popular scanning and document management solution, carefully designed specifically for home office use. Part traditional file cabinet, part digital-document desktop, PaperPort SE 14 is the fastest and easiest way to scan, share, search and organize your documents. Additionally, PaperPort SE 14 now delivers anytime-anywhere access to your most important files however it's convenient for you - using a PC, Mac, iPhone, iPad, or Android device.



PAPERPORT SE 14



Avision
Button Manager V2

AVScan X



(Optional)

Avision AV332 Product Specifications

| | |
|-------------------------------|---|
| Paper Feeding: | ADF 50-page capacity |
| Scanning Technology: | Contact Image Sensor (CIS) |
| Light Source: | LED |
| ID card thickness: | Up to 1.25 mm |
| Long Page Mode: | 200 dpi: 6000 mm (236 in.) 300 dpi: 5540 mm (218 in.) 600 dpi: 1500 mm (59 in.) |
| Scanning Size: | Max. 216 x 356 mm (Legal) (8.5 x 14 in) Min. 52 x 74 mm (2.0 x 2.9 in) |
| Scanning Speed: | 40 PPM/ 80 IPM (BW, A4, 300 dpi) 40 PPM/ 80 IPM (color, A4, 200 dpi) 32 PPM/ 64 IPM (color, A4, 300 dpi) |
| Paper Thickness: | 27~413 g/m ² (7 ~ 110 lb) |
| Resolution: | 1200 dpi |
| Output Resolution: | 75, 100, 150, 200, 300, 400, 600 and 1200 dpi |
| Halftone Patterns: | Dither and Error Diffusion |
| Grayscale mode: | 16-bit input 8-bit output |
| Color mode: | 48-bit input 24-bit output |
| File Formats: | BMP, PNG, GIF, JPEG, PDF, Searchable PDF Multi-Page TIFF, TIFF, RTF, TXT, XPS, DOC, XLS, PPT, DOCX, XLSX, PPTX, HTML. |
| Bundled Software: | Avision Button Manager V2, Avision AVScan X Nuance PaperPort SE 14 |
| Interface/Drivers: | USB 2.0 / TWAIN , ISIS , WIA |
| Power Supply: | Input: 100~240 VAC, 50/60 Hz Output: 24V, 1.5A |
| Power Consumption: | Operation: 15W Sleep: 1.6 W Ready: 6W Off: 0.27W |
| Environmental Factors: | Operating temperature: 10°C to 35°C (50°F to 95°F) Operating humidity: 10% to 85% |
| Acoustic Noise: | Standby: <25 dB Operating: <55 dB |
| Maximum (WxDxH): | 282 x 457 x 334 mm |
| Minimum (WxDxH): | 282 x 152 x 165 mm |
| Weight: | 2.4 kg |
| Recommended Daily Duty Cycle: | 5,000 Sheets |

Specifications subject to change without notice.

We have endeavored to ensure that the information in this manual is accurate, and that Avision is not responsible for printing or typographical errors. The above configuration is for reference only. The actual configuration (software, hardware) should be compiled with the specification described in the purchase agreement. Avision Inc. owns the intellectual property rights of the product outlook and design and the product outlook and design are subject to change. Avision reserves the right to the interpretation of the product description. Avision, Inc. All rights reserved. Other company and product names mentioned in this document are trademarks of their respective companies. Wherein the third party product is for reference only and Avision does not warrant these products nor is responsible for the efficiency or use of these products.

System Requirements

| | |
|---------------------------|--|
| CPU: | Intel Core i3 (2.1GHz) or Higher |
| Memory: | 2GB (32bit Windows) 4GB (64bit Windows) |
| DVD-ROM: | DVD ROM Drive |
| USB: | USB 2.0 |
| Windows Operating System: | Windows 10, 8.x, 7, Vista, SP3, XP (32 & 64 bit) |

Contents

| |
|--|
| Scanner |
| Power Supply |
| Quick Guide |
| USB 2.0 Cable |
| CD-ROM includes: |
| -Scanner Driver (TWAIN/ISIS Driver) |
| -Avision Button Manager V2 |
| -Avision AVScan X |
| -Nuance PaperPort SE 14 |

FUJIFILM

For more information or detailed product specifications, please call or visit us at:
FUJIFILM Business Innovation Philippines Corp.
25th Floor SM Aura Tower, 26th St. Corner McKinley Parkway,
Taguig City 1630 Philippines
Tel: 632-8878-5200
fujifilm.com/fbph