

FUJIFILM

newline **Q⁺** *SERIES*

SMART SOLUTIONS FOR TRANSFORMING YOUR TEACHING SPACES



Q⁺ SERIES

Transform your teaching space

65"

75"

86"

4 K

Increase collaboration across the board with the Q+ Series. Give your lessons all the tools you need for modern classrooms. Bring interactivity to your lessons to encourage more engagement and maximum productivity.

TRANSFORM YOUR TEACHING SPACE



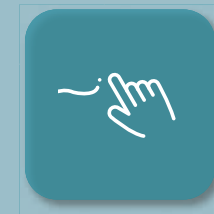
A Smooth & Fun touch Experience

With up to 20 points of touch, the Q+ Series allows users to share their ideas simultaneously and provides a highly responsive, lag-free multi-touch experience.

The display supports Palm Rejection Technology that can differentiate between a stylus or a fingertip and a palm or a wrist, effectively “rejecting” unwanted contact.



20 Points

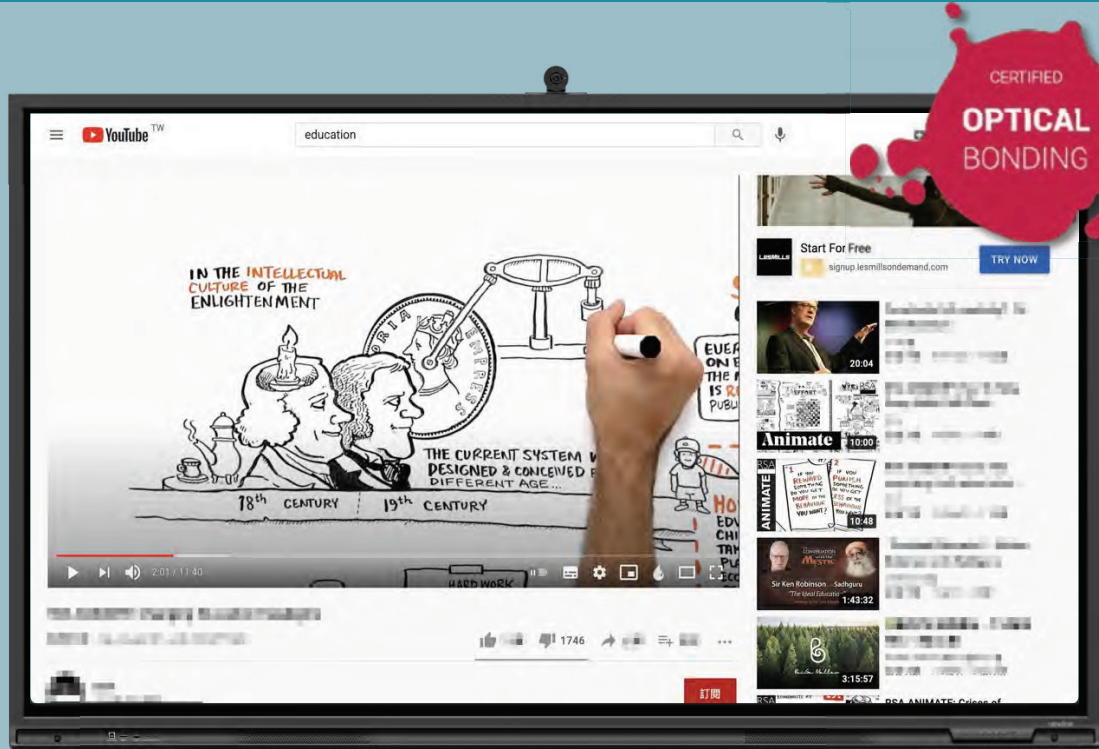


Multi-touch Experience



Palm Rejection

TRANSFORM YOUR TEACHING SPACE



An Immersive Audio-visual Experience

Optical bonding 4K display gives you an ultra-wide 178° viewing angle. No matter where you sit in the room, the image is robust and clear. Embedded powerful 2.1 channel speakers (2 from 15W both speaker + 1 from 15W subwoofer), allow sound and human voice can be delivered clearly in class. The Q+ Series provides outstanding audio-visual quality for classrooms.



4K Display



Ultra-wide 178 °



High Quality Sound
incl. Subwoofer

TRANSFORM YOUR TEACHING SPACE

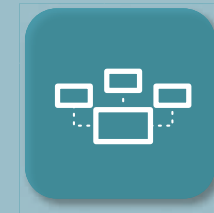


Modular Connectivity Design to Meet Classroom Network Environment **Underdeveloped*

With built-in Wi-Fi modular, including dual wireless card Wi-Fi 6, Hotspot 5G and Bluetooth 5.2, the interactive display offers greater capacity, security, efficiency and performance.



Built-in Wi-Fi



Connectivity



Security

TRANSFORM YOUR TEACHING SPACE



Use Profiles **Underdeveloped*

The Q+ Series supports multi-profile management that allows users to personalize their own tools and workspace, enabling security and convenience.

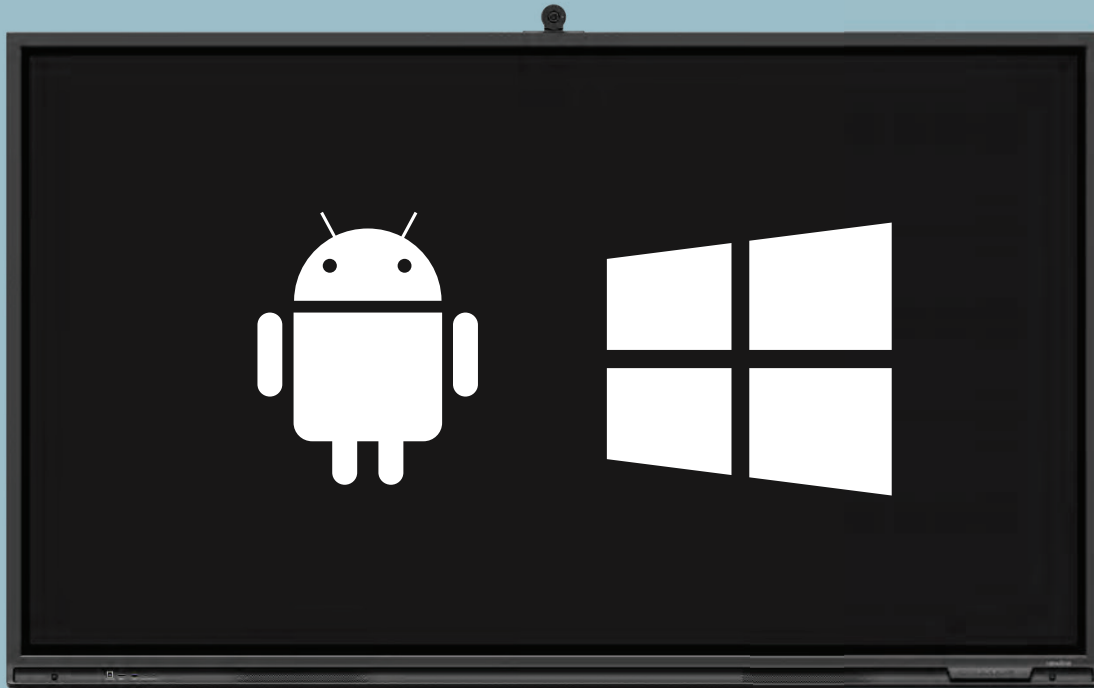


Personalized Profile



Security

TRANSFORM YOUR TEACHING SPACE



OS Compatibility

With Windows system and the built-in Android 11, teachers can use any familiar software and application of their choices and access to Google Drive and OneDrive more easily and securely. With disable embedded OS option, no malware or virus can be installed, while annotation is still available. The Android system can be upgraded automatically without a hardware upgrade.



Android 11



Windows System



Disable embedded OS Security

**Underdeveloped*

Purposefully Designed For Classroom

Proximity Sensor for an Eco-friendly Workspace

Equipped with Proximity Sensor, the Newline interactive display will power on/off automatically based on human presence in the room.

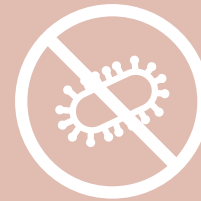


AG + AF Tempered Glass

The glass with anti-glare and anti-fingerprint coating efficiently prevents reflections and fingerprints negatively impact, preserving touch sensitivity and image quality.

Anti-microbial Glass

Optional anti-microbial, featured glass from the latest medical technologies development, helps to prevent the spread of harmful germs and guard the health of users during panel interaction.



Purposefully Designed For Classroom



SDM-S Expansion Slot

Plug in an SDM-S type peripheral for easy expansion and flexible integration with Windows OS or Linux OS.



Easy Access Hot Keys

The hot keys are intuitive designed for the control of the most frequently used functions and easy to be pressed with a nature angle.



Full-featured Type-C

Support Type-C cable which achieves power charging, touch, audio and video transmission, and moreover, with supporting up to 65W Power Delivery output on the front port. Plug & play in any way with the powered Type-C connection.



Built-in HDMI Out Port

Provide a connection method to transmit both audio and video signals over a single cable from the display to your own device.



newline

Purposefully Designed For Classroom

Sharp and immersive visual experience

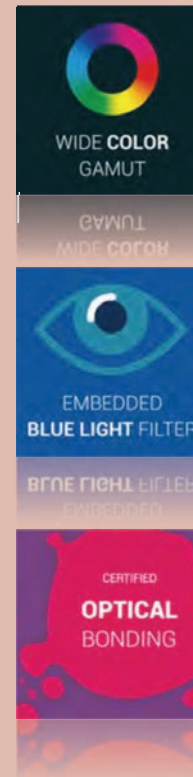
The 4K display with 85% NTSC creates clear and vivid imagery, bringing users a colorful and lifelike visual experience.

Eye Protection

Low Blue Light designed with TÜV Rheinland certified provides an eye-friendly viewing experience.

4K Camera (Optional)

The flexible 4K camera with 120° FOV can be tilted upward and downward within 15° to the angle that works for distance learning and online class.



newline

newline **Q⁺SERIES**

newline

Purposefully Designed For Classroom

Pen Tray Design

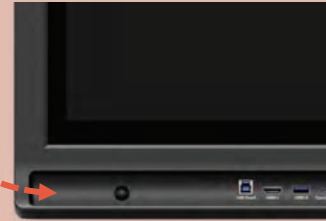
The unique groove design is the perfect place to hold pen and stylus.

OTA Firmware Management

Remotely manage firmware and software updates with no user intervention.

Warranty Policy

Comprehensive warranty with a three-year warranty and technical support.



Customize with Accessories

Build your intelligent classroom with Newline accessories including Newline OPS/SDM, Newline Chromebox, Mobile Stand, and more.



Newline OPS



SDM-S



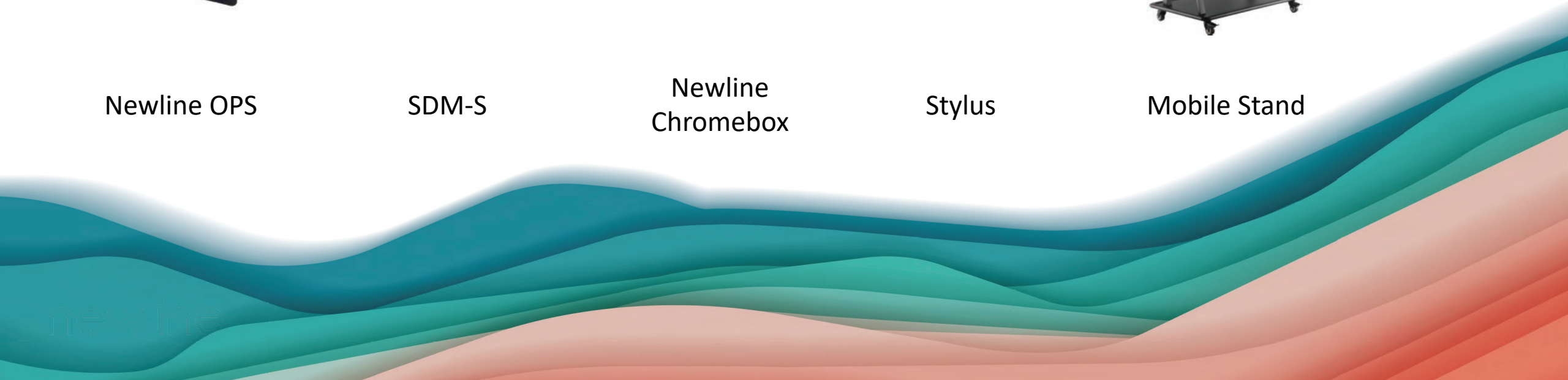
Newline
Chromebox



Stylus



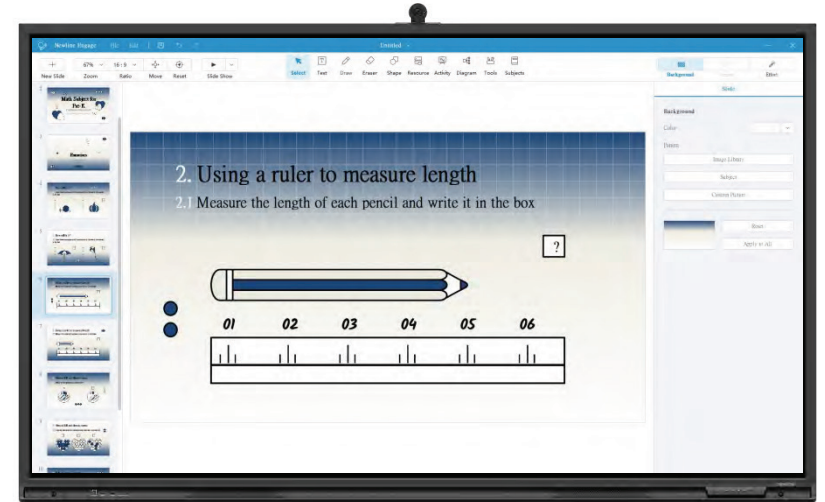
Mobile Stand



newline **ENGAGE****New ways to engage**

Newline Engage is the perfect solution for interactive classroom that provides various classroom tools. The versatility of Newline Engage gives both teachers and students more engaging lessons and better-quality education, increasing interactivity and collaboration in the day-to-day instruction.

- Windows-based software.
- Import PPT file or create the contents directly.
- Smart whiteboard and annotation tool.
- Object recognition that differentiates between fingers and pens.
- Provides various tools such as screenshot tools, text, pen kinds, colored inks, sector tools, infinite canvas, diagram tools, diverse backgrounds, and record function for teachers and students to enrich the content of the course.
- Easily save contents as image or PDF file, and even wirelessly transfer these courses out to other devices via QR code.



newline CLASSROOMTOOLS

The Newline Classroom Tools widget is a sticky overlay, perfect for classroom management. Cut down the number of devices teachers need to use throughout the day with this widget.

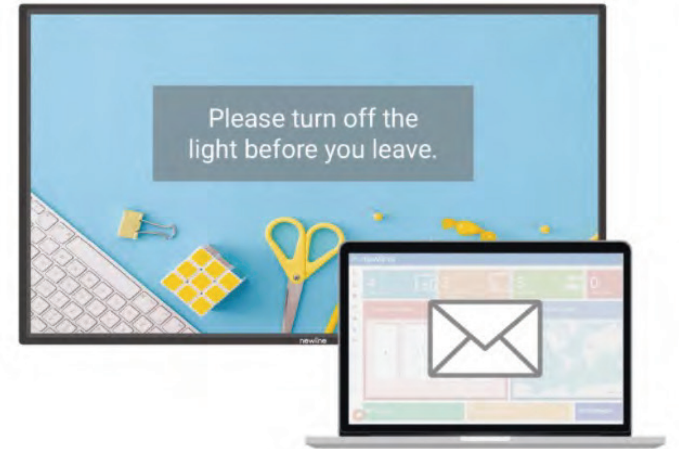
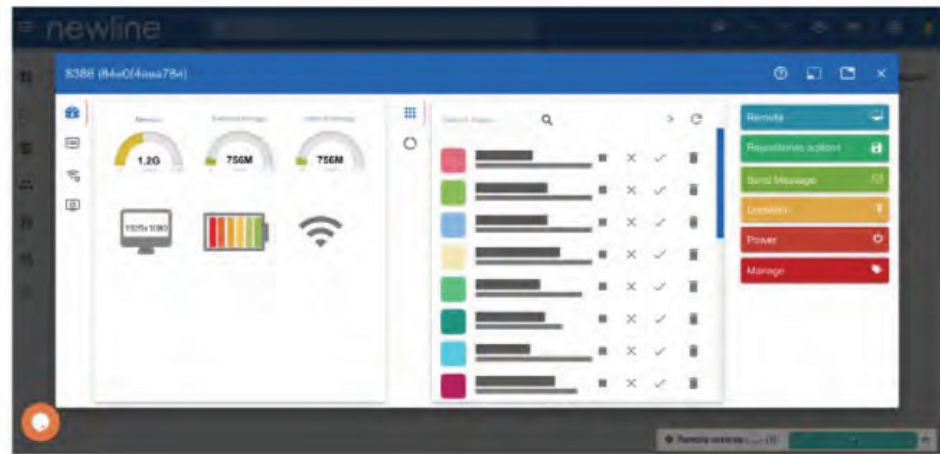


- **Instructions:** alert the students on how they should be completing their work (in groups, with a neighbor, or alone in silence) using image cues
- **Traffic light:** a simulated traffic light, manually switch between colors
- **Dice:** digital die or dice, perfect math manipulative for a quick demonstration
- **Timer:** our #1 requested tool, use it for tests and classroom activities
- **Stopwatch:** track and clock laps
- **Calendar:** easy access to a simple calendar
- **Zoom in:** emphasize something on the screen with the zoom-in option
- **Spotlight:** draw attention to a single point on the screen while blocking out the rest
- **Curtain:** add a special effect by unveiling the screen with curtains that open from the middle

newline **DISPLAY MANAGEMENT**

A remote display management solution

Centrally manage your Newline interactive displays in any location through a secure and dedicated web portal. Easily manage and deploy apps, configure Newline display settings, use the digital signage features or broadcast messages to all displays.





newline **CAST**

Wireless screen sharing

Easily share your screen from any device. Newline Cast is simple to use, with one click you can present wirelessly from any network. Control and annotate from the Newline display or from your own device all with the freedom to walk around the room.



newline **BROADCAST**

Content sharing to large classrooms

Tap one button and share your display screen with the students who may not be able to see the display as clearly. They can follow along with the lesson on their own personal screen, reducing eyestrain and making sure everyone gets the most out of the day's lesson.



FUJIFILM | newline

20E Pasir Panjang Road , #08-21
Mapletree Business City, Singapore 117439
[fujifilm.com/fbglobal](https://www.fujifilm.com/fbglobal)