

Device Log Service

A service to tally logs of MFD usage



No Special Server or App Required!

MFD usage can be tallied and viewed via Web UI. This streamlines expense management and promotes TCO savings.

Device Log Service is a service that allows you to tally and view device usage via a web browser. Accounting results are shown in color-coded, easy-to-read tables and charts, and they can also be printed. Filter results by target devices or user IDs to manage expenses for individuals or departments. To use this service, you only need an MFD with an EP-BB* contract and a PC with Internet access. No dedicated server is required. Promote TCO reduction in your office with ease.

*MFD management service provided by FUJIFILM Business Innovation.

Benefits

Easy
introduction

No special equipment or efforts are required. PDCA cycle to achieve cost saving can be created easily.



Detailed
management

Usage can be tallied per device or user. You can pinpoint how the devices are being used.



Visualized
savings

Usage can be visualized with tables and charts. This will promote company-wide cost-saving consciousness.



Optimal
deployment

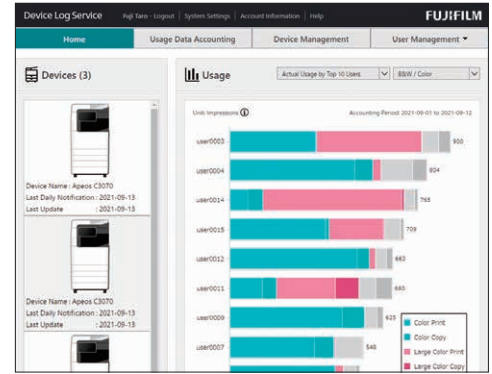
Usage per department can be obtained. Consolidate and deploy the optimal number of devices.



Simple and easy-to-use operation screen

Home Page – Overall Usage

After you log in, the Home Page will be displayed where you will see a list of managed devices and This Month's Usage. The Function Toolbar at the top of the Home Page allows you to switch between functions.

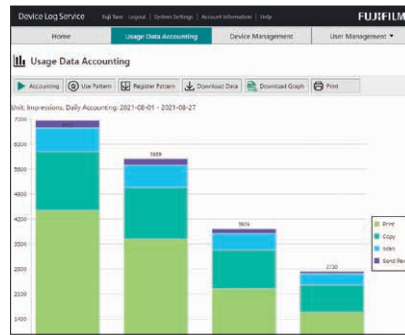


Usage Data Accounting – Accounting Patterns can be registered

You can calculate usage by user or device, and download the usage data. In addition, you can collate and calculate the usage of multiple tenants. You can set detailed accounting targets and items according to usage purpose, and display the accounting results as charts. Settings can then be registered as an Accounting Pattern for future use. By setting a unit cost* for color and black & white, you can calculate the charges and display the data as charts.

*Unit cost settings apply to all models.

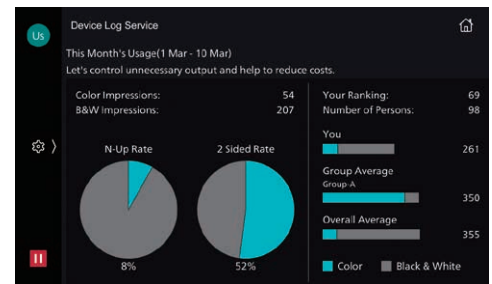
- Pie chart
- Bar/column chart
- Line chart
- Area chart



Check usage on the device

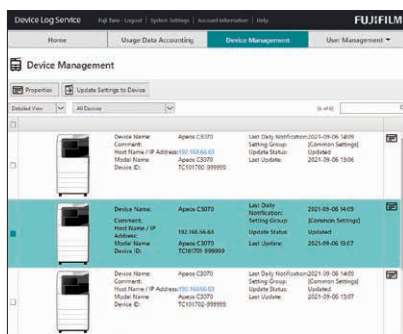
Monthly usage can be displayed on the control panel, along with messages to users. You can display, for example, a message to recommend 2 Sided or 2-Up printing. *Multifunction Device Linkage Tool must be installed.

Check usage on the device control panel



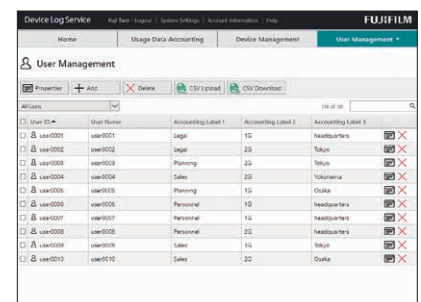
Device Management

Provides details on devices that are being managed by Device Log Service. You can switch between List and Detailed View, and change accounting settings.



User Management

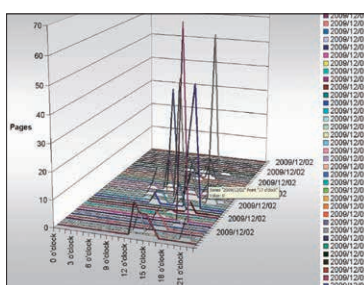
Up to 10000 users can be registered. You can easily add users and update information. User information can be exported and registered in CSV format. You can also synchronize user information with Azure Active Directory and LDAP server data.



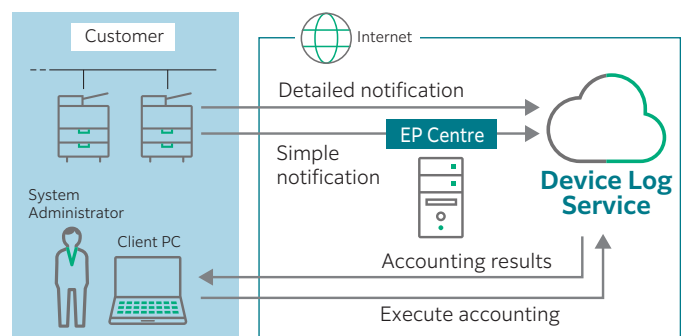
Job Log Analyzer*

Job Log Analyzer analyzes job logs saved in Device Log Service and creates individual reports and more detailed graphs.

*Job Log Analyzer can be downloaded from Device Log Service Help.



How Device Log Service Works



Operating Environment of Device Log Service

Operating Environment/Client PC

Item	Description
Supported Operating System *1	Windows 10 Home (32bit/64bit)
	Windows 10 Pro (32bit/64bit)
	Windows 10 Enterprise (32bit/64bit)
	Windows 10 Education (32bit/64bit)
	Windows 8.1 (32bit/64bit)
	Windows 8.1 Pro (32bit/64bit)
Web Browser	Internet Explorer 11
	Microsoft Edge
	Mozilla FireFox
	Google Chrome™ *2
Linked Software	Microsoft Outlook 2019
	Microsoft Outlook 2016
	Microsoft Outlook 2013
	Mozilla Thunderbird
	Internet Explorer 11

*1: OS supports the following languages: English, Traditional Chinese, Korean, Thai and Japanese. *2: Web browser is recommended when using multi-tenant accounting feature.

Job Log Analyzer Operating Environment

Item	Description	
	64-bit	32-bit
Supported Operating System	Windows 10 Pro (64bit) Windows 10 Enterprise (64bit) Windows 10 Education (64bit)	Windows 10 Pro (32bit/64bit)
		Windows 10 Enterprise (32bit/64bit)
		Windows 10 Education (32bit/64bit)
		Windows 8.1 Pro Update (32bit/64bit)
Required software	Microsoft Excel 2019 (64bit) *1*2	Windows 8.1 Pro (32bit/64bit)
		Windows Server 2016 Standard (64bit)
		Windows Server 2012 R2 Standard (64bit)
CPU	Pentium® III 1 GHz or higher	
Hard disk capacity	4 GB or more free space	
Memory capacity	256 MB or larger	
Display	XGA (1024 x 768 pixels) and above	
Required hardware	DVD-ROM Drive	

Note: To custom install Microsoft Excel, Microsoft Visual Basic for Applications must be installed.

*1: Only in Compatibility Mode.

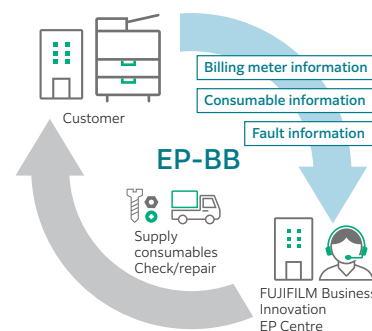
*2: Operation is guaranteed for the same language version of Microsoft Excel on each language version of operating system.

EP-BB

Supports stable operation of devices

EP-BB is a service that utilizes broadband networks to assist management tasks after installation of MFDs for free. It offers prompt support for unexpected malfunctions and runout of consumables as well as reports activity per device depending on customer demand. This will assist efficient utilization of your devices.

- To start receiving this service, you must apply for the service. This service may be unavailable depending on the region of use or contract type. For more information, contact your sales representative.
- Our customer engineer will make the necessary settings for EP-BB on the device unit based on customer demand.
- All communication line charges, including broadband costs, are the responsibility of the customer.



fujifilm.com/fbth

FUJIFILM

FUJIFILM Business Innovation (Thailand) Co., Ltd.

123 Sun Towers A Building, 23rd-26th Floor, Vibhavadi-Rangsit Road, Chomphon, Chatuchak, Bangkok 10900
Tel: 02-660-8000 Fax: 02-617-6748-9 Call Center: 02-660-8400

บริษัท ฟุจิฟิล์ม บิซิเนส อินโนเวชั่น (ประเทศไทย) จำกัด

123 อาคารชั้นทาวเวอร์ เอ ชั้น 23-26 ถนนวิภาวดีรังสิต จอมพล จตุจักร กรุงเทพฯ 10900
โทร: 02-660-8000 แฟกซ์: 02-617-6748-9 Call Center: 02-660-8400

The available model varies depending on the country/region. Please ask the sales representatives for details.

The product specifications, appearance and other details in this brochure are subject to change without notice for improvements.

Please note that product colours printed in this catalog may appear different from that of the actual product for reasons attributable to paper and printing ink.

Trademarks •FUJIFILM and FUJIFILM logo are registered trademarks or trademarks of FUJIFILM Corporation. •Microsoft, Windows, Windows Server, Excel, Microsoft Edge, Internet Explorer and Outlook are either registered trademarks or trademarks of Microsoft Corporation in the United States and/or other countries. •Pentium is trademarks of Intel Corporation in the U.S. and/or other countries. •Other company names or product names are registered trademarks or trademarks of each company.



For Your Safety

Before using the product, read the Instruction Manual carefully for proper use. Use the product with the power source and voltage specified. Be sure to establish ground connection. Otherwise, electronic shock may result in the case of a failure or short circuit.

The information is as of October, 2021. PIC-0179 TH (2104-R1)