

# 0 Approach to Nature-Related Issues

0.1	Fujifilm Group and Sustainability .....	4
0.2	Biodiversity and Water Resources in the Fujifilm Group .....	4
0.3	Main Initiatives for the Biodiversity Conservation .....	5
0.4	Strategic Policy for TNFD Alignment .....	6

## 0 Approach to Nature-Related Issues

### 0.1 Fujifilm Group and Sustainability

The Fujifilm Group established its Group Purpose, “Giving our world more smiles,” in January 2024, marking its 90th anniversary. Guided by this Group Purpose, we are committed to further addressing social issues through our business activities—including the provision of innovative technologies, products, and services—and to becoming a company that contributes even more to the realization of a sustainable society. To realize the Group Purpose, the Fujifilm Group established the Sustainable Value Plan 2030 (“SPV2030”), its CSR plan targeting FY2030. In SVP2030, we extracted current and future social issues related to the Group’s businesses and identified materiality (priority issues) after conducting a materiality assessment from two perspectives: addressing social issues through our business, and environmental and social considerations in our business processes.



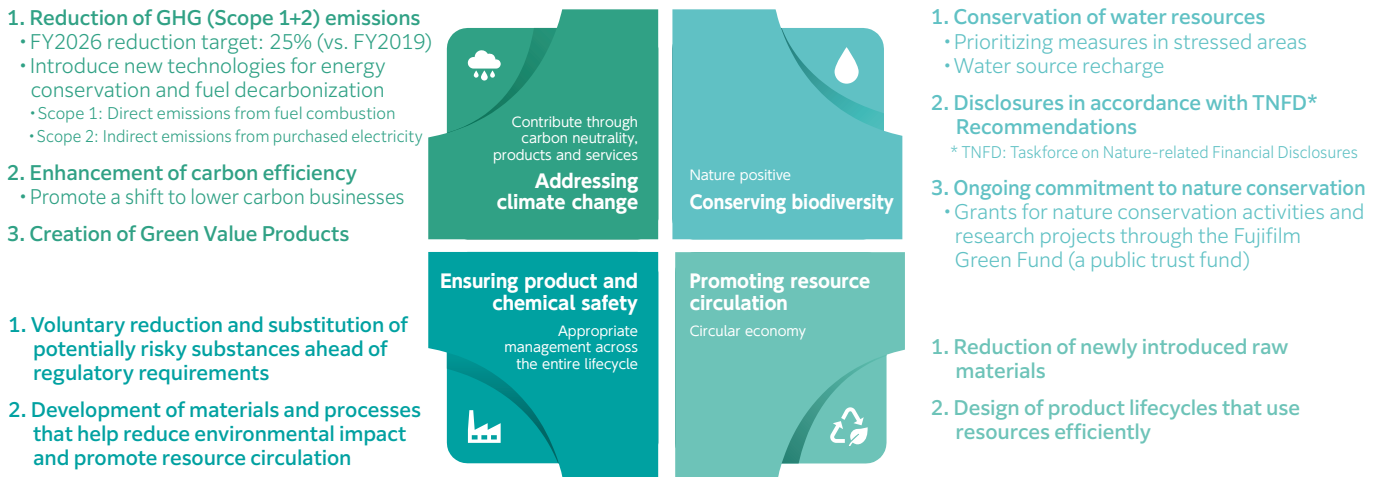
### 0.2 Biodiversity and Water Resources in the Fujifilm Group

The Fujifilm Group acknowledges that all of our business activities have benefited from and impacted the natural environment since our foundation. Recognizing environmental initiatives as essential to participation in global business, we have identified four priority issues and are addressing them in an integrated manner: responding to climate change, promoting resource circulation, conserving biodiversity, and ensuring product and chemical safety.

As part of our biodiversity conservation efforts, we position the management and conservation of water resources as a material policy. Given that clean water has been essential to photographic film production since our founding, we have long recognized the importance of water and have worked to improve water-use efficiency by reducing water inputs and promoting recycling. In light of growing global concerns over water risks, we are advancing further efforts to promote efficient water management and the conservation of water resources. Recognizing that reducing dependence on water resources and minimizing the impacts of their use are critical for sustainable business activities, we will work with local communities to conserve limited water resources and help preserve a rich natural environment.

We have positioned disclosures based on the TNFD (Taskforce on Nature-related Financial Disclosures) Recommendations as one of our key biodiversity conservation policies. In 2024, we joined the TNFD Forum and, after registering as a TNFD Adopter, made our first TNFD disclosures in accordance with the TNFD Framework v1.0 in October 2024. We will strengthen the identification and management of nature-related dependencies, impacts, risks and opportunities, and integrate them into our business strategy to enhance the Fujifilm Group’s corporate value and support the realization of a sustainable society.

Recognizing that environmental initiatives are essential for participation in global business, we will take an integrated approach to addressing issues in four key areas.



In recent years, the necessity and importance of nature positive\*1 have gained international attention, accelerating nature-related initiatives worldwide. Acknowledging the deterioration of nature as a critical social issue, we have established the following policies related to the environment and biodiversity.

- FUJIFILM Holdings Green Policy (Environmental Policy) <https://holdings.fujifilm.com/en/sustainability/mission/policy/green>
- FUJIFILM Holdings - Guidelines for Biodiversity <https://holdings.fujifilm.com/en/sustainability/mission/policy/biodiversity>
- FUJIFILM Holdings Procurement Policy <https://www.fujifilm.com/jp/en/about/sustainability/procurement>

### 0.3 Main Initiatives for the Biodiversity Conservation

<b>Business sites</b>	<ul style="list-style-type: none"> <li>• Addressing water risks <a href="https://holdings.fujifilm.com/en/sustainability/activity/environment/priority-issue-3#link03">https://holdings.fujifilm.com/en/sustainability/activity/environment/priority-issue-3#link03</a></li> <li>• Addressing water risks <a href="https://www.fujifilm.com/jp/en/about/brand/story/campaign/socialcontribution/environment/07">https://www.fujifilm.com/jp/en/about/brand/story/campaign/socialcontribution/environment/07</a></li> </ul>
<b>Products</b>	<ul style="list-style-type: none"> <li>• Incorporating the perspective of “biodiversity conservation” into design for environment <a href="https://holdings.fujifilm.com/en/sustainability/activity/environment">https://holdings.fujifilm.com/en/sustainability/activity/environment</a></li> <li>• Engaging suppliers in respecting human rights and conserving the environment / biodiversity under the Sustainable Procurement Guidelines <a href="https://holdings.fujifilm.com/en/sustainability/mission/policy/procurement">https://holdings.fujifilm.com/en/sustainability/mission/policy/procurement</a></li> <li>• Enforcing procurement from forest resources that are managed with consideration for the environment and human rights under the “Procurement Rules for Plant-Derived Materials” <a href="https://www.fujifilm.com/jp/ja/about/procurement/concept">https://www.fujifilm.com/jp/ja/about/procurement/concept</a></li> <li>• Reinforcing governance with the establishment of the ESG Paper Procurement Committee (2014) for enhanced compliance with the Paper Procurement Rules <a href="https://www.fujifilm.com/fbglobal/eng/company/csr/svp2030/environment/bio.html">https://www.fujifilm.com/fbglobal/eng/company/csr/svp2030/environment/bio.html</a></li> </ul>
<b>Local Communities</b>	<ul style="list-style-type: none"> <li>• Contributing to local communities through the Fujifilm Green Fund (established in 1983; first conservation-themed public trust fund created by a Japanese company) <a href="https://holdings.fujifilm.com/en/sustainability/activity/other-activities/social-contribution-activities/greenfund">https://holdings.fujifilm.com/en/sustainability/activity/other-activities/social-contribution-activities/greenfund</a></li> <li>• Collaborative Activities with NPOs <a href="https://holdings.fujifilm.com/en/sustainability/activity/other-activities/social-contribution-activities/plantgreenery">https://holdings.fujifilm.com/en/sustainability/activity/other-activities/social-contribution-activities/plantgreenery</a> <a href="https://kansatsuro.jeef.or.jp/about">https://kansatsuro.jeef.or.jp/about</a></li> <li>• Joining the Ministry of the Environment's 30by30 Alliance <a href="https://policies.env.go.jp/nature/biodiversity/30by30alliance/">https://policies.env.go.jp/nature/biodiversity/30by30alliance/</a></li> <li>• Joining the Kumamoto Groundwater Foundation <a href="https://kumamotogwf.or.jp/english.html">https://kumamotogwf.or.jp/english.html</a></li> </ul>

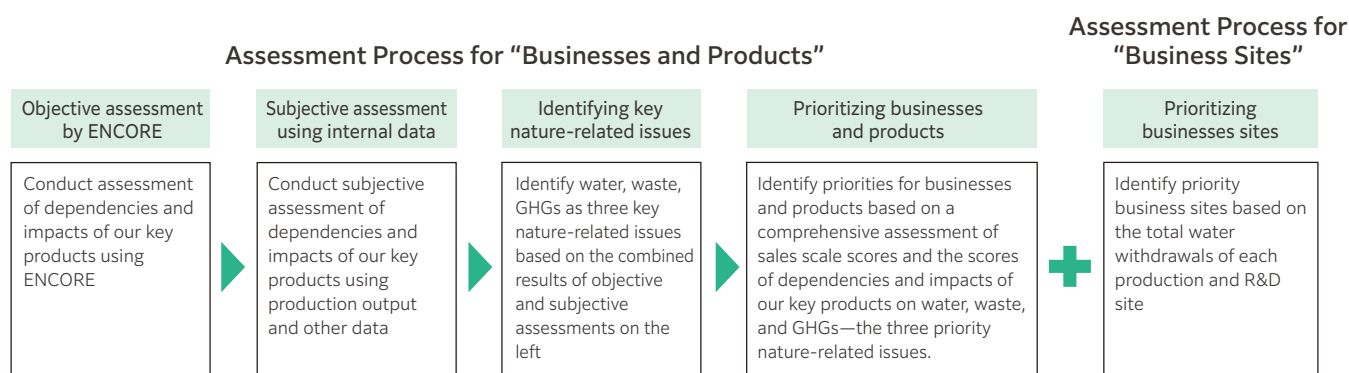
## 0.4 Strategic Policy for TNFD Alignment

The Fujifilm Group operates businesses across four segments: Healthcare, Electronics, Business Innovation, and Imaging. To appropriately identify nature-related issues across all business activities and implement effective response measures, it is essential to identify priorities for “businesses and products” and “business sites” based on double materiality. We conduct scoping based on the following approach.

**Businesses and products:** We identify priority businesses and products by conducting a scoring assessment from two perspectives: nature-related dependencies / impacts and sales scale. (Nature-related dependencies / impacts are comprehensively evaluated based on both objective assessment—using ENCORE<sup>\*2</sup>, a TNFD-recommended tool—and subjective assessment derived from actual production of approximately 30 key products across the Fujifilm Group’s businesses.)

**Business sites:** Based on location data, we conduct a preliminary assessment of approximately 300 business sites to identify surrounding natural characteristics and key considerations, and designate production and R&D sites as priority targets with high nature-related relevance within the Fujifilm Group. Furthermore, due to the importance of water resources, we prioritize sites with high total water withdrawals and those located in areas where nature-related considerations have been identified, and conduct detailed assessments of nature-related dependencies and impacts for their operational activities.

We periodically review and update this scoping in response to changes in factors such as sales and water withdrawals.



As described in the aforementioned assessment process for businesses and products, we have identified water, GHG emissions, and waste as the three nature-related issues most relevant to our key products in terms of dependencies and impacts on nature. We prioritize these issues in addressing the risks and opportunities identified through the LEAP approach. We also place importance on biodiversity related to raw material use, and in our upstream value chain analysis and assessment, we will conduct surveys and assessments of suppliers concerning high-impact commodities<sup>\*3</sup> as defined by the Science Based Targets Network (SBTN).

Based on these assessment results, we identify businesses, products, and business sites for TNFD analysis, and will establish a medium-term assessment roadmap and indicators going forward. We will address nature-related issues in line with the roadmap and pursue sustainable growth by mitigating risks and creating opportunities.