

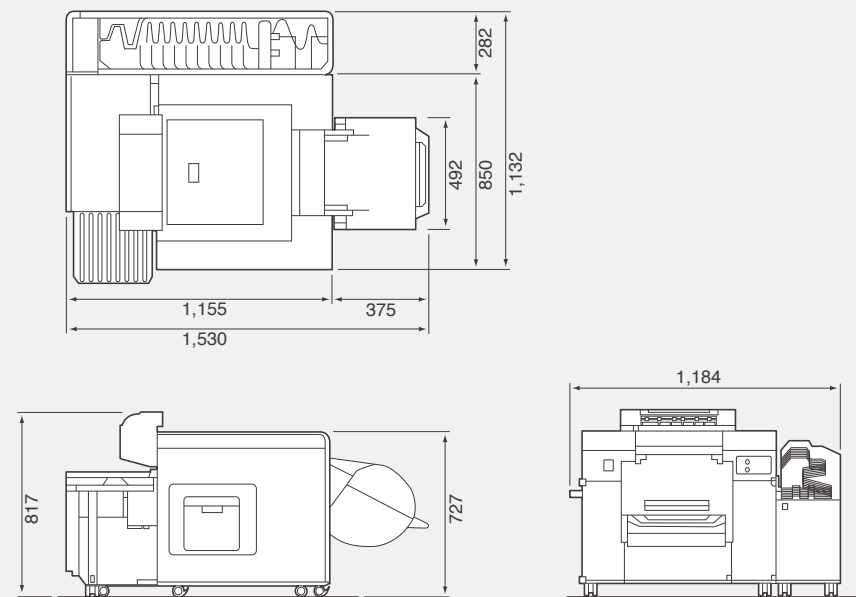
Dry Minilab Frontier DL600 Main Specifications

Model name	DL600
Print method	Piezoelectric inkjet system
Print size	127 × 89 mm to 305 × 1,219 mm (5" × 3.5" to 12" × 48")
Print capacity	Standard Mode: Approx. 650 print/hr (152 × 102 mm, 6" × 4") Approx. 240 print/hr (203 × 254 mm, 8" × 10") High Quality Mode: Approx. 150 print/hr (152 × 102 mm, 6" × 4") Approx. 60 print/hr (203 × 254 mm, 8" × 10")
Print resolution	Standard Mode 720 × 720 dpi, High Quality Mode 1,440 × 1,440 dpi
Roll paper	180 m: 102 mm (4"), 127 mm (5"), 152 mm (6") 100 m: 203 mm (8"), 210 mm, 254 mm (10"), 305 mm (12")
Paper loading	2 roll paper feeders (Built-in)
Paper supply	Width: 102 to 203 mm (4" to 8") [Front]/102 to 305 mm (4" to 12") [Rear]
Paper type	Glossy/Luster
Ink cartridges	5 Colors (C, M, Y, K, LB) of dye based ink (Volume: 700 ml per color)
Back printing	Two 40-character lines in backside print of information
Printer sorter	10 order sorter (Maximum size 210 × 305 mm, 8" × 12")
Foot print	Approx. 1.48 m ² (included sorter unit)
Installation space	Approx. 3.2 m ² (included sorter unit)
Power requirements	100/120V/200-240V (50/60Hz) single-phase two-wire
Dimensions (W × D × H)	1,184 × 1,530 × 817 mm
Weight	Approx. 160 kg (included sorter unit)
Power consumption	Approx. 63 kWh/month (in energy saving mode) Approx. 89 kWh/month (without energy saving mode)

Note: Specifications are subject to change without notice due to improvements.

Dimensions

Unit: mm



Newly-developed Technology Enables
Unprecedented Photo Image Quality

A New Stage in Inkjet Minilabs!

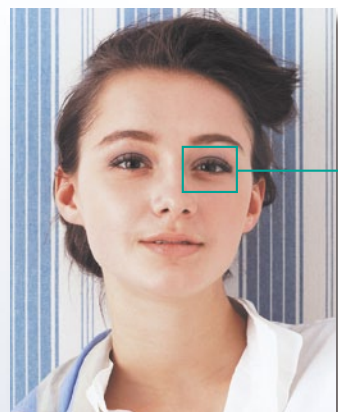
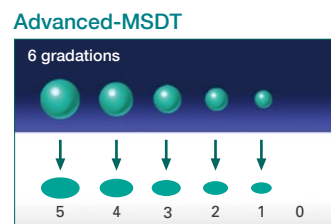
Leading edge technologies enable high quality images, stable image quality and user-friendly design

01 HIGH QUALITY IMAGE

Vivid medium density with five colored inks for beautiful reproductions



The newly-developed five color ink system achieves enhanced granularity and gradation, producing remarkable improvements in medium density areas such as skin tones, blue skies, gray backgrounds.



5 colored inks



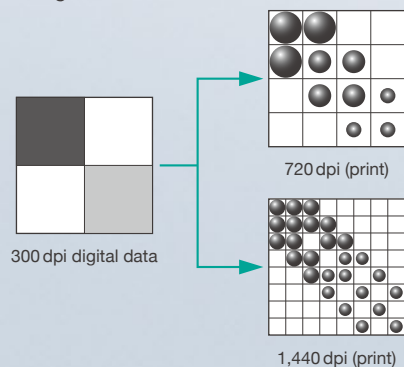
4 colored inks



02 STABLE IMAGE QUALITY

Enhanced image quality with high-resolution mode

A 1,440 dpi mode is available for high-quality prints, in addition to a 720 dpi normal print mode. The 1,440 dpi mode achieves further enhanced high image quality even from the same resolution image data.



Outstanding image processing technology ensures the best possible image quality

The combination of DL600 exclusive paper and five different colored inks, along with Fujifilm's proprietary image processing technology Image Intelligence™ ensures optimal reproduction of original images.



Stable high-quality prints achieved by automatic nozzle check function

Automatic nozzle check function verifies the nozzle condition and automatically cleans clogged up nozzles to avoid prints with defective images being produced. Besides, the function enables easy maintenance.

Minimum banding with highly accurate paper feeding

A newly-developed, highly accurate paper feeding system minimizes banding.

Enhanced roller cleaning capability – easy operation for shop staff

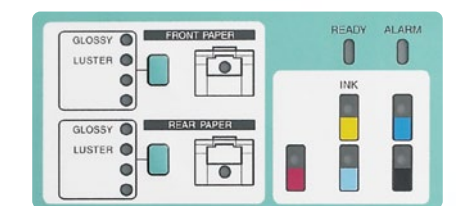
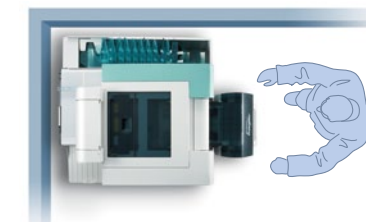
Exclusive cleaning sheet enables easy cleaning operations. No need to call in specialists.



03 USER-FRIENDLY DESIGN

Exceptional space saving with wall positioning

Operation on two sides of the printer (front and left side) enables the rear and right side to be positioned against a wall to save valuable shop space. Printer function is further enhanced with front operation panel.



Front operation panel

Minimum replacement of consumables

180-meter paper rolls up to 6" (152 mm) in width and 700 ml ink cartridges minimize replacement of paper and inks.



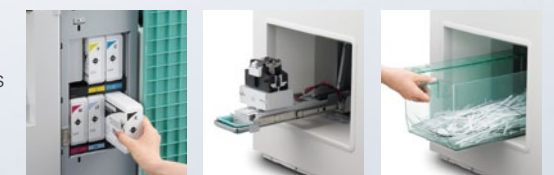
Elimination of paper magazine saving cost & space

As no magazine is required, costs can be saved and space for storing spare paper can be reduced.



Easy maintenance of consumables

Replacement of ink cartridges and back printer ribbons, and waste paper disposal operations are enhanced with simple "Open & Remove" maintenance capability.



Versatile features respond to a variety of customer needs

Ability to handle paper sizes up to 12 x 48" (305 x 1,219 mm), and side sorter (capacity up to ten orders, print sizes up to 8 x 12" (203 x 305 mm) enables photo shops to respond to customers' sophisticated and diversifying requirements.

